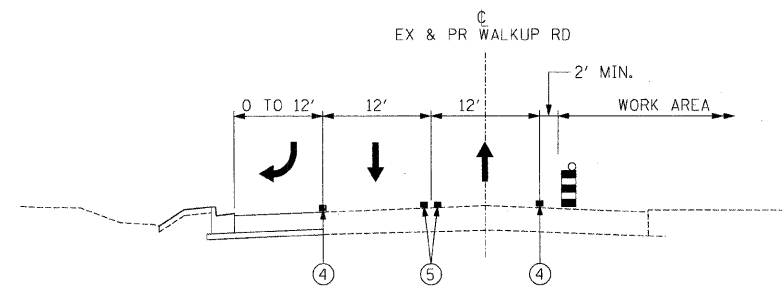
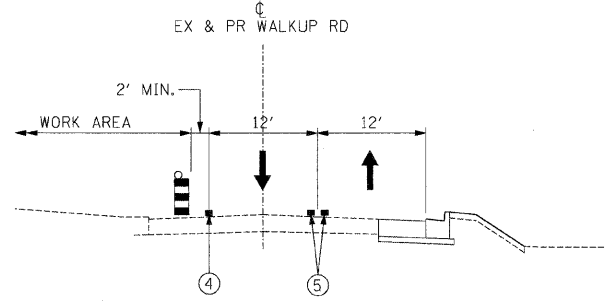


F.A.U. RTE.	SECTION	COUNTY	TOTAL SHEETS	SHEET NO.
0085	00-00246-01-FP	MCHENRY	236	50
STA.	TO STA.			
FED. ROAD DIST. NO. 1	ILLINOIS	FED. AID PROJECT		
CONTRACT NO: 63266				



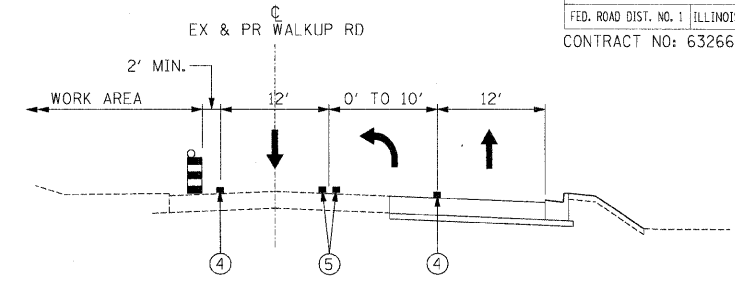
MOT TYPICAL SECTION

STAGE 2  
 STA 135+22.30 TO STA 138+90.63  
 STA 152+30.21 TO STA 156+13.30



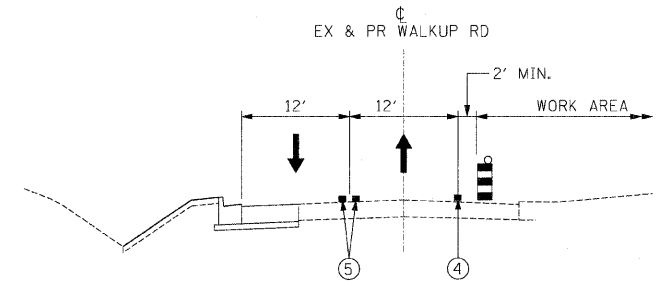
MOT TYPICAL SECTION

STAGE 2  
 STA 182+45.40 TO STA 186+04.61  
 STA 193+52.01 TO STA 201+03.73  
 STA 217+85.00 TO STA 226+00.00



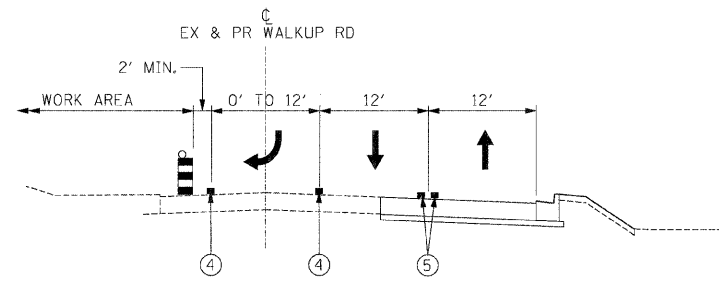
MOT TYPICAL SECTION

STAGE 2  
 STA 205+22.05 TO STA 207+94.76



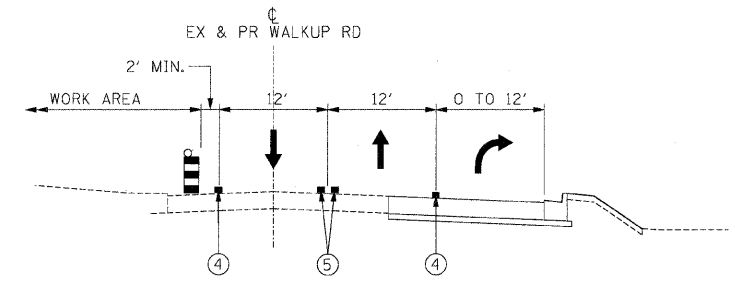
MOT TYPICAL SECTION

STAGE 2  
 STA 138+90.63 TO STA 152+30.21  
 STA 156+13.30 TO STA 174+91.75



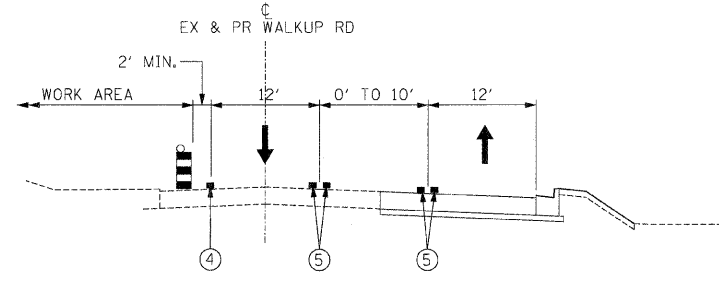
MOT TYPICAL SECTION

STAGE 2  
 STA 191+05.23 TO STA 193+52.01



MOT TYPICAL SECTION

STAGE 2  
 STA 177+61.75 TO STA 181+63.52  
 STA 186+04.61 TO STA 189+84.87  
 STA 212+82.44 TO STA 216+38.08



MOT TYPICAL SECTION

STAGE 2  
 STA 201+03.73 TO STA 205+22.05  
 STA 209+11.10 TO STA 212+82.44

LEGEND:

- VERTICAL PANEL W/BI-DIRECTIONAL STEADY BURNING LIGHT
- DRUM W/BI-DIRECTIONAL STEADY BURNING LIGHT
- DIRECTION OF TRAFFIC
- EXISTING PAVEMENT MARKING
- TEMPORARY PAVEMENT
- TEMPORARY AGGREGATE SHOULDER
- TEMPORARY PAVEMENT MARKING - 4" (WHITE)
- TEMPORARY PAVEMENT MARKING - 4" (YELLOW)
- PROPOSED PAVEMENT MARKING

REVISIONS	
NAME	DATE

MCHENRY COUNTY DIVISION OF TRANSPORTATION  
 WALKUP ROAD F.A.U. 0085

**MAINTENANCE OF TRAFFIC  
 TYPICAL SECTIONS  
 STAGE 2**

SCALE: N.T.S. DRAWN BY: BRH  
 DATE: 08/17/09 CHECKED BY: KA

**TENG**  
 TENG & ASSOCIATES, INC.  
 ENGINEERS/ARCHITECTS/PLANNERS  
 205 N. MICHIGAN AVE., CHICAGO, IL 60601  
 TELEPHONE: 312/416-0000

\\MOT0808.DON...ATTBODY\_V.DGN  
 8-4-2009 14:50:05  
 I:\DOCUMENTS\330003\CIVIL\DON\MOT0808\SW.DGN  
 1 2 3 4 5 6 7 8 9 10 11 12 13 14 15 16 17 18 19 20 21 22 23 24 25 26 27 28 29 30 31 32 33 34 35 36 37 38 39 40 41 42 43 44 45 46 47 48 49 50 51 52 53 54 55 56 57 58 59 60 61 62 63