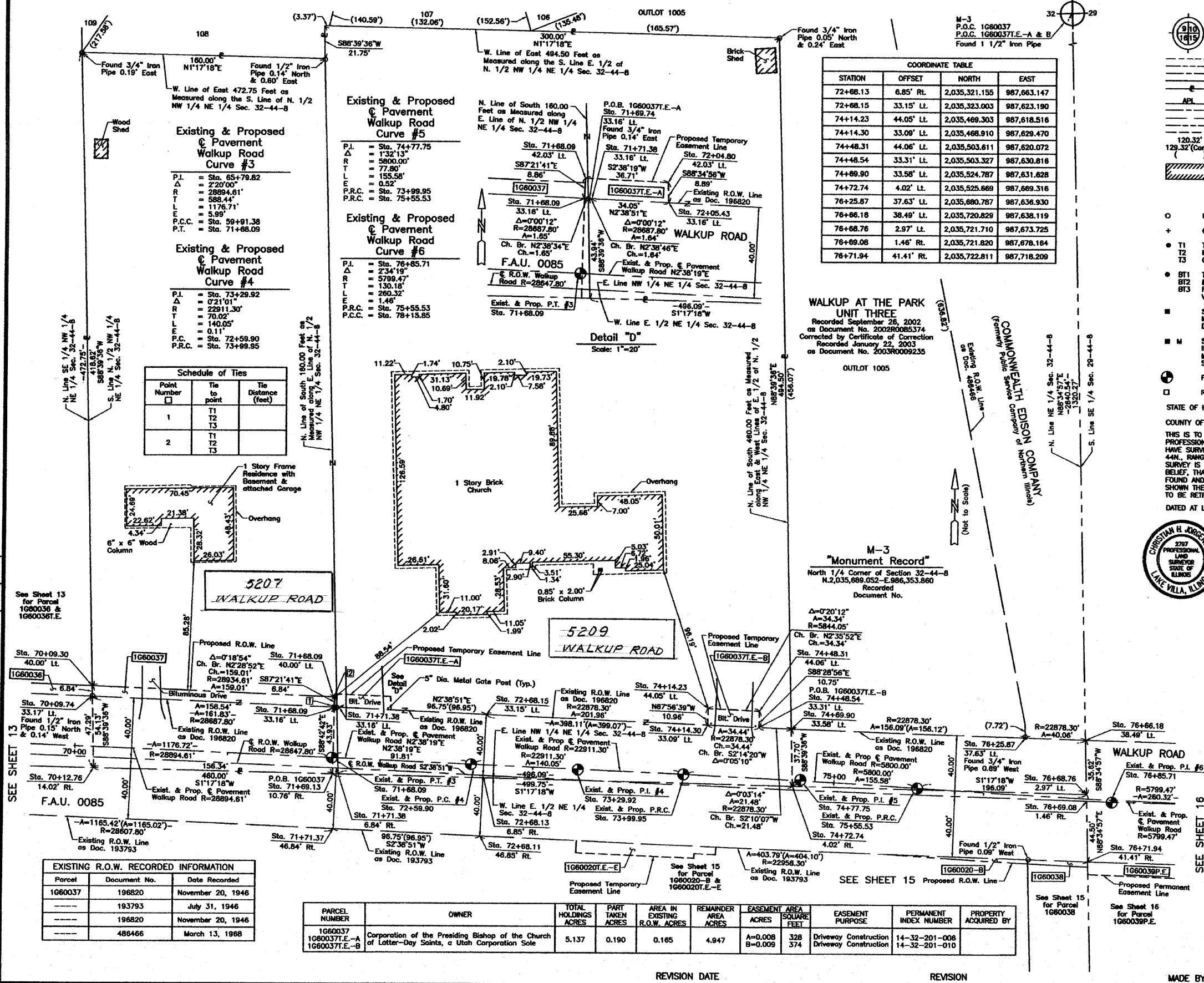


PART OF THE NE 1/4 OF SEC. 32, TWP. 44 N., R. 8 E. OF THE 3RD. P.M., IN McHENRY COUNTY, ILLINOIS.



COORDINATE TABLE

STATION	OFFSET	NORTH	EAST
72+68.13	6.85' RL	2,035,321.155	987,663.147
72+68.15	33.15' LL	2,035,323.003	987,623.190
74+14.23	44.05' LL	2,035,469.303	987,618.516
74+14.30	33.09' LL	2,035,468.910	987,629.470
74+48.31	44.06' LL	2,035,503.611	987,620.072
74+48.54	33.31' LL	2,035,503.327	987,630.816
74+69.90	33.58' LL	2,035,524.787	987,631.628
74+72.74	4.02' LL	2,035,525.669	987,669.316
76+25.87	37.63' LL	2,035,680.787	987,636.930
76+66.18	38.49' LL	2,035,720.829	987,638.119
76+68.76	2.97' LL	2,035,721.710	987,673.725
76+69.08	1.46' RL	2,035,721.820	987,678.164
76+71.94	41.41' RL	2,035,722.811	987,718.209

LEGEND

- SECTION CORNER
- QUARTER SECTION CORNER
- SECTION LINE
- QUARTER SECTION LINE
- QUARTER SECTION LINE
- PLATTED LOT LINE
- PROPERTY (DEED) LINE
- APL
- APPARENT PROPERTY LINE
- CENTER LINE
- EXISTING RIGHT OF WAY LINE
- PROPOSED RIGHT OF WAY LINE
- PROPOSED EASEMENT
- MEASURED DIMENSION
- COMPUTED DIMENSION
- RECORD DATA
- EXISTING BUILDING

Bearings and Coordinates are referenced to the Illinois Coordinate System NAD83 (1987) East Zone, according to the H.A.R.N. Network.

SCALE: 1"=30'

Existing & Proposed Pavement Walkup Road Curve #3

P.I. = Sta. 65+79.82
 Δ = 220°00'
 R = 28894.61'
 T = 588.44'
 L = 1176.71'
 E = 5.99'
 P.C.C. = Sta. 59+91.38
 P.T. = Sta. 71+68.09

Existing & Proposed Pavement Walkup Road Curve #4

P.I. = Sta. 73+29.92
 Δ = 071°01'
 R = 22911.30'
 T = 70.02'
 L = 140.05'
 E = 0.11'
 P.C. = Sta. 72+59.90
 P.R.C. = Sta. 73+89.95

Schedule of Ties

Point Number	Tie to point	Tie Distance (feet)
1	T1	
	T2	
	T3	
2	T1	
	T2	
	T3	

Existing & Proposed Pavement Walkup Road Curve #5

P.I. = Sta. 74+77.75
 Δ = 132°13'
 R = 5800.00'
 T = 77.80'
 L = 155.58'
 E = 0.52'
 P.R.C. = Sta. 73+99.95
 P.R.C. = Sta. 75+55.53

Existing & Proposed Pavement Walkup Road Curve #6

P.I. = Sta. 76+85.71
 Δ = 234°19'
 R = 5799.47'
 T = 130.18'
 L = 260.32'
 E = 1.46'
 P.R.C. = Sta. 75+55.53
 P.C.C. = Sta. 78+15.85

Detail "D"
Scale: 1"=20'

WALKUP AT THE PARK UNIT THREE
 Recorded September 26, 2002
 as Document No. 2002R0065374
 Corrected by Certificate of Correction
 Recorded January 22, 2003
 as Document No. 2003R009235



THIS IS TO CERTIFY THAT WE, JORGENSEN & ASSOCIATES, INC., AN ILLINOIS PROFESSIONAL DESIGN FIRM LAND SURVEYING CORPORATION, NUMBER 184-2771, HAVE SURVEYED THE PLAT OF HIGHWAYS SHOWN HEREON IN SECTION 32, TOWNSHIP 44N., RANGE 8E., OF THE THIRD PRINCIPAL MERIDIAN, McHENRY COUNTY, THAT THE SURVEY IS TRUE AND COMPLETE AS SHOWN TO THE BEST OF MY KNOWLEDGE AND BELIEF, THAT THE PLAT CORRECTLY REPRESENTS SAID SURVEY, THAT ALL MONUMENTS FOUND AND ESTABLISHED ARE OF PERMANENT QUALITY AND OCCUPY THE POSITIONS SHOWN THEREON AND THAT THE MONUMENTS ARE SUFFICIENT TO ENABLE THE SURVEY TO BE RETRACED. MADE FOR THE DEPARTMENT OF TRANSPORTATION, STATE OF ILLINOIS.

DATED AT LAKE VILLA, ILLINOIS THIS _____ DAY OF _____ 20__ A.D.

COORDINATE TABLE

STATION	OFFSET	NORTH	EAST
70+09.30	40.00' LL	2,035,064.519	987,604.855
70+09.74	33.17' LL	2,035,064.679	987,611.701
70+12.76	14.02' RL	2,035,065.785	987,658.975
71+68.09	33.16' LL	2,035,223.069	987,618.569
71+68.09	40.00' LL	2,035,223.384	987,611.738
71+68.09	42.03' LL	2,035,223.477	987,609.715
71+69.13	10.76' RL	2,035,222.081	987,662.490
71+69.74	33.16' LL	2,035,224.717	987,618.645
71+71.37	46.84' RL	2,035,222.659	987,698.635
71+71.38	6.84' RL	2,035,224.506	987,658.678
71+71.38	33.16' LL	2,035,226.354	987,618.720
72+04.60	42.03' LL	2,035,280.147	987,611.405
72+05.43	33.16' LL	2,035,280.367	987,620.293
72+68.11	46.85' RL	2,035,319.368	987,703.104

EXISTING R.O.W. RECORDED INFORMATION

Parcel	Document No.	Date Recorded
1060037	196820	November 20, 1946
---	193793	July 31, 1946
---	196820	November 20, 1946
---	486466	March 13, 1968

PARCEL NUMBER	OWNER	TOTAL HOLDINGS ACRES	PART TAKEN ACRES	AREA IN EXISTING R.O.W. ACRES	REMAINDER AREA ACRES	EASEMENT AREA SQUARE FEET	EASEMENT PURPOSE	PERMANENT INDEX NUMBER	PROPERTY ACQUIRED BY
1060037	Corporation of the Presiding Bishop of the Church of Latter-Day Saints, a Utah Corporation Sole	5.137	0.190	0.165	4.947	A=0.008 B=0.009	328 374	Driveway Construction Driveway Construction	14-32-201-006 14-32-201-010

PLAT OF HIGHWAYS STATE OF ILLINOIS DEPARTMENT OF TRANSPORTATION F.A.U. 0085 (WALKUP ROAD)

SECTION 00-00246-00-FP McHENRY COUNTY PROJECT JOB NO. R-91-006-06 STATION 70+00 TO STATION 77+00 SCALE: 1"=30' SHEET 14 OF 24

BUREAU OF LAND ACQUISITION 201 WEST CENTER COURT SCHAUMBURG, ILLINOIS 60196