

PART OF THE SE 1/4 OF SEC. 17, TWP. 44 N., R. 8 E. OF THE 3RD. P.M., IN McHENRY COUNTY, ILLINOIS.

PARCEL NUMBER	OWNER	TOTAL HOLDINGS ACRES	PART TAKEN ACRES	AREA IN EXISTING R.O.W. ACRES	REMAINDER AREA ACRES	EASEMENT AREA ACRES	EASEMENT SQUARE FEET	EASEMENT PURPOSE	PERMANENT INDEX NUMBER	PROPERTY ACQUIRED BY
1G60082	Bruce J. Howard and Vilma M. Howard husband and wife, not as joint tenants, nor as tenants in common but as tenants by the entirety	3.717	0.092	0.068*	3.625	N/A	N/A	N/A	14-17-451-002	
1G60083T.E.	Edwina M. Dumont, as Trustee of the Edwina M. Dumont Trust dated March 15, 2004	0.551	N/A	N/A	0.551	0.010	425	Driveway Construction	14-17-476-002	P.O.C. 1G60082 Sta. 195+59.45
1G60084T.E.	Dennis Austin and Christine L. Austin, his wife, in joint tenancy	0.551	N/A	N/A	0.551	0.004	161	Driveway Construction	14-17-476-001	40.64' LL Found 3/4" Iron Pipe 1.17' North N67°22'56"E

*Area lying in 10' Road Construction & Maintenance Easement according to Oakwood Manor Subdivision

Schedule of Ties

Point Number	Tie to point	Tie Distance (feet)
1	T1 T2 T3	
2	T1 T2 T3	
3	T1 T2 T3	
4	T1 T2 T3	

EXISTING R.O.W. RECORDED INFORMATION

Parcel	Document No.	Date Recorded
1G60082	94R033548	May 31, 1994
1G60083	338158	May 21, 1958
1G60084	338158	May 21, 1958
---	338158	May 21, 1958
---	93R055091	September 15, 1993
---	94R033548	May 31, 1994

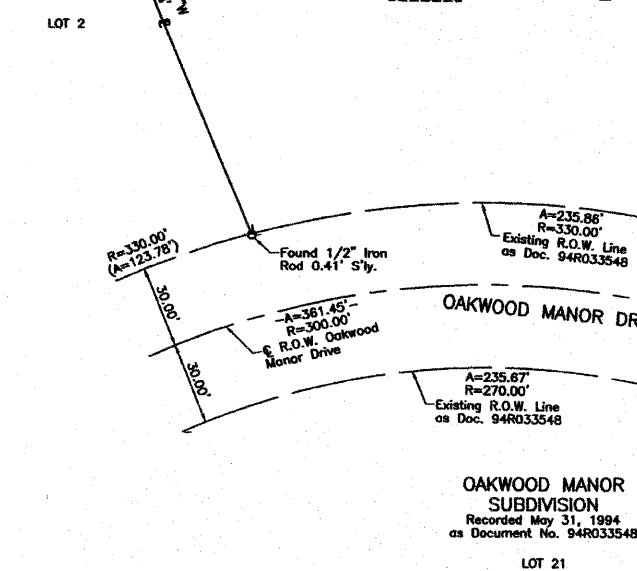
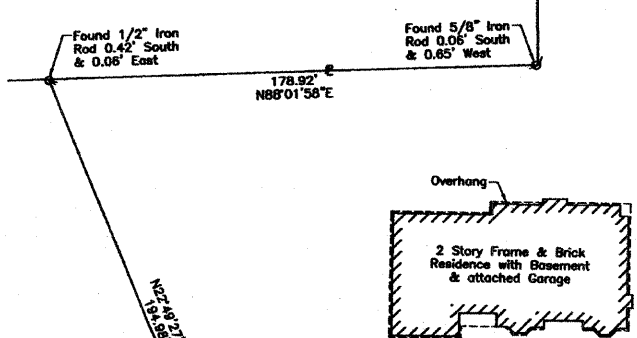
COORDINATE TABLE

STATION	OFFSET	NORTH	EAST
192+58.08	38.94' RL	2,047,310.470	987,636.104
192+92.48	51.03' RL	2,047,344.950	987,647.960
192+92.67	38.90' RL	2,047,345.057	987,635.831
193+78.38	38.82' RL	2,047,430.763	987,635.154
193+82.31	40.58' LL	2,047,434.137	987,555.724
193+82.31	50.58' LL	2,047,434.068	987,545.724
194+14.59	46.08' RL	2,047,467.019	987,642.182
194+14.65	38.79' RL	2,047,467.030	987,634.868
194+36.59	46.08' RL	2,047,489.020	987,642.009
194+38.65	38.77' RL	2,047,489.030	987,634.694
195+28.36	38.24' RL	2,047,580.735	987,633.525
195+28.36	38.68' RL	2,047,580.742	987,633.970
195+28.45	48.24' RL	2,047,580.990	987,643.524
195+58.06	50.64' LL	2,047,610.821	987,544.439
195+59.45	40.64' LL	2,047,611.278	987,554.436

OAKWOOD MANOR SUBDIVISION
Recorded May 31, 1994
as Document No. 94R033548

LOT 1

6410 OAKWOOD MANOR DR.
CRYSTAL LAKE



OAKWOOD MANOR SUBDIVISION
Recorded May 31, 1994
as Document No. 94R033548

SEE SHEET 38

F.A.U. 0085

10' Road Construction & Maintenance Easement

R.O.W. Walkup Road

Sta. 193+82.31

P.O.B. 1G60082

Sta. 193+82.31

40.58' LL

Proposed R.O.W. Line

Sta. 191+25.34

50.50' LL

Sta. 190+71.05

90.95' LL

Sta. 190+11.33

70.87' LL

Found Leaning 1/2" Iron Rod 0.74' South

REVISION DATE

SEE SHEET 36

REVISION

MADE BY

REVISION

REVISION

REVISION

REVISION

REVISION

REVISION

REVISION

REVISION

REVISION

REVISION

REVISION

REVISION

REVISION

REVISION

REVISION

REVISION

REVISION

REVISION

REVISION

REVISION

REVISION

REVISION

REVISION

REVISION

REVISION

REVISION

REVISION

REVISION

REVISION

REVISION

REVISION

REVISION

REVISION

REVISION

REVISION

REVISION

REVISION

REVISION

REVISION

REVISION

REVISION

REVISION

REVISION

REVISION

REVISION

REVISION

REVISION

REVISION

REVISION

REVISION

REVISION

REVISION

REVISION

REVISION

REVISION

REVISION

REVISION

REVISION

REVISION

REVISION

REVISION

REVISION

REVISION

REVISION

REVISION

REVISION

REVISION

REVISION

REVISION

REVISION

REVISION

REVISION

REVISION

REVISION

REVISION

REVISION

REVISION

REVISION

REVISION

REVISION

REVISION

REVISION

REVISION

REVISION

REVISION

REVISION

REVISION

REVISION

REVISION

REVISION

REVISION

REVISION

REVISION

REVISION

REVISION

REVISION

REVISION

REVISION

REVISION

REVISION

REVISION

REVISION

REVISION

REVISION

REVISION

REVISION

REVISION

REVISION

REVISION

REVISION

REVISION

REVISION

REVISION

REVISION

REVISION

REVISION

REVISION

REVISION

REVISION

REVISION

REVISION

REVISION

REVISION

REVISION

REVISION

REVISION

REVISION

REVISION

REVISION

REVISION

REVISION

REVISION

REVISION

REVISION

REVISION

REVISION

REVISION

REVISION

REVISION

REVISION

REVISION

REVISION

REVISION

REVISION

REVISION

REVISION

REVISION

REVISION

REVISION

REVISION

REVISION

REVISION

REVISION

REVISION

REVISION

REVISION

REVISION

REVISION

REVISION

REVISION

REVISION

REVISION

REVISION

REVISION

REVISION

REVISION

REVISION

REVISION

REVISION

REVISION

REVISION

REVISION

REVISION

REVISION

HAZELWOOD SUBDIVISION
Recorded September 15, 1993
as Document No. 93R055091
Corrected by Certificate of Correction
Recorded October 29, 1993
as Document No. 93R065985

LEGEND

SECTION CORNER
QUARTER SECTION CORNER
SECTION LINE
QUARTER SECTION LINE
QUARTER SECTION LINE
PLATTED LOT LINE
PROPERTY (DEED) LINE
APPARENT PROPERTY LINE
CENTER LINE
EXISTING RIGHT OF WAY LINE
PROPOSED RIGHT OF WAY LINE
PROPOSED EASEMENT
MEASURED DIMENSION
COMPUTED DIMENSION
RECORD DATA
EXISTING BUILDING

Bearings and Coordinates are referenced to the Illinois Coordinate System NAD83 (1997) East Zone, according to the I.A.R.N. Network.

○ IRON PIPE OR ROD FOUND
● "MAG" NAIL SET
+ CUT CROSS FOUND OR SET
● 5/8" REBAR SET

● T1
● T2
● T3 THESE STAKES REFERENCE FOUND OR SET MONUMENTATION. SET 5/8 INCH IRON ROD FLUSH WITH GROUND TO THE FOUND IRON STAKE. IDENTIFIED BY COLORED PLASTIC CAP BEARING SURVEYORS REGISTRATION NUMBER.

● BT1
● BT2
● BT3 THESE STAKES, IN CULTIVATED AREAS, REFERENCE FOUND OR SET MONUMENTATION. BURIED 5/8 INCH IRON ROD 20 INCHES BELOW GROUND TO THE FOUND IRON STAKE. IDENTIFIED BY COLORED PLASTIC CAP BEARING SURVEYORS REGISTRATION NUMBER.

■ STAKING OF PROPOSED RIGHT OF WAY. SET DIVISION OF HIGHWAYS SURVEY MARKER TO MONUMENT THE POSITION SHOWN. IDENTIFIED BY INSCRIPTION DATA AND SURVEYORS REGISTRATION NUMBER.

■ M STAKING OF PROPOSED RIGHT OF WAY IN CULTIVATED AREAS. BURIED 5/8 INCH METAL ROD 20 INCHES BELOW GROUND TO MARK FUTURE SURVEY MARKER POSITION IDENTIFIED BY COLORED PLASTIC CAP BEARING SURVEYORS REGISTRATION NUMBER.

□ PERMANENT SURVEY MARKER, I.D.O.T. STD 2135 (TO BE SET BY OTHERS)

□ RIGHT OF WAY STAKING PROPOSED TO BE SET.

STATE OF ILLINOIS }
COUNTY OF LAKE }

THIS IS TO CERTIFY THAT WE, JORGENSEN & ASSOCIATES, INC., AN ILLINOIS PROFESSIONAL DESIGN FIRM LAND SURVEYING CORPORATION, NUMBER 184-2771, HAVE SURVEYED THE PLAT OF HIGHWAYS SHOWN HEREIN IN SECTION 17, TOWNSHIP 44N., RANGE 8E., OF THE THIRD PRINCIPAL MERIDIAN, McHENRY COUNTY, THAT THE SURVEY IS TRUE AND COMPLETE AS SHOWN TO THE BEST OF MY KNOWLEDGE AND BELIEF, THAT THE PLAT CORRECTLY REPRESENTS SAID SURVEY, THAT ALL MONUMENTS FOUND AND ESTABLISHED ARE OF PERMANENT QUALITY AND OCCUPY THE POSITIONS SHOWN THEREON AND THAT THE MONUMENTS ARE SUFFICIENT TO ENABLE THE SURVEY TO BE RETRACED. MADE FOR THE DEPARTMENT OF TRANSPORTATION, STATE OF ILLINOIS.

DATED AT LAKE VILLA, ILLINOIS THIS 20 DAY OF _____ 20__ A.D.

PRESIDENT
ILLINOIS PROFESSIONAL LAND SURVEYOR NO. 35-2797
LICENSE EXPIRATION DATE: NOVEMBER 30, 2008
THIS PROFESSIONAL SERVICE CONFORMS TO THE CURRENT ILLINOIS MINIMUM STANDARDS FOR A BOUNDARY SURVEY.

NOTE: SURFACE COORDINATES ARE SHOWN.

COORDINATE TABLE

STATION	OFFSET	NORTH	EAST
190+11.33	70.87' LL	2,047,062.956	987,528.015
190+18.41	39.54' RL	2,047,070.810	987,638.369
190+42.31	0.47' LL	2,047,094.428	987,598.196
190+48.14	7.24' RL	2,047,100.310	987,605.870