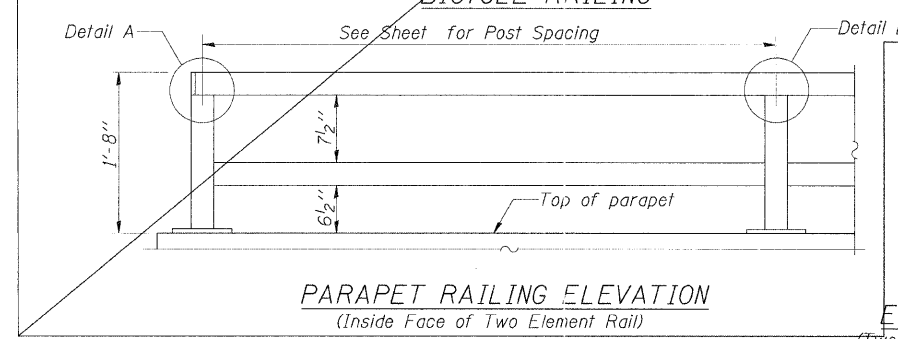
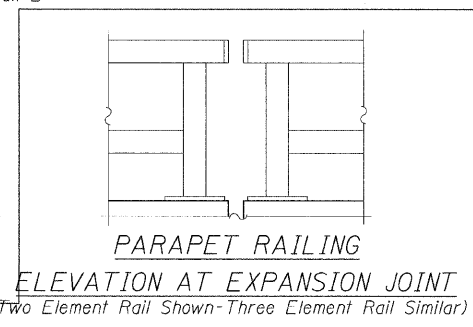


**BICYCLE RAILING**

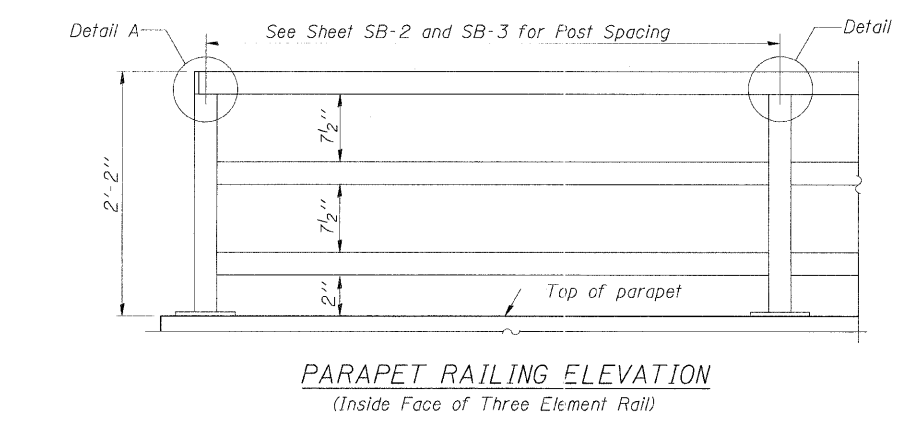
**BICYCLE RAILING**



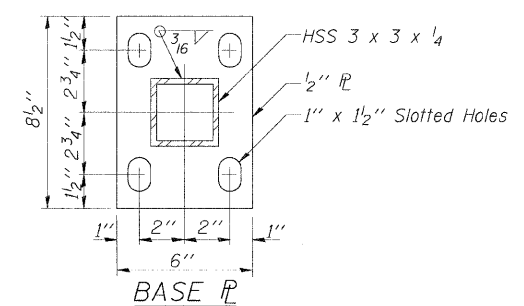
**PARAPET RAILING ELEVATION**  
(Inside Face of Two Element Rail)



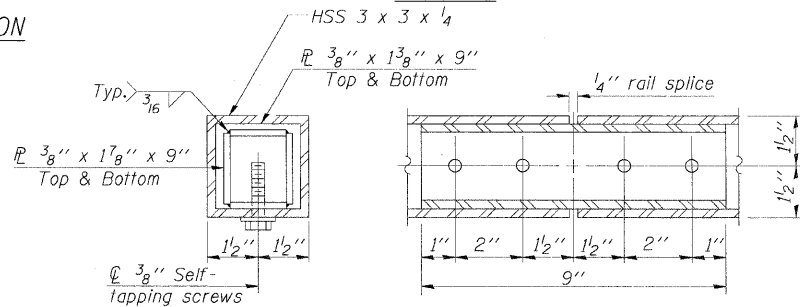
**PARAPET RAILING ELEVATION AT EXPANSION JOINT**  
(Two Element Rail Shown-Three Element Rail Similar)



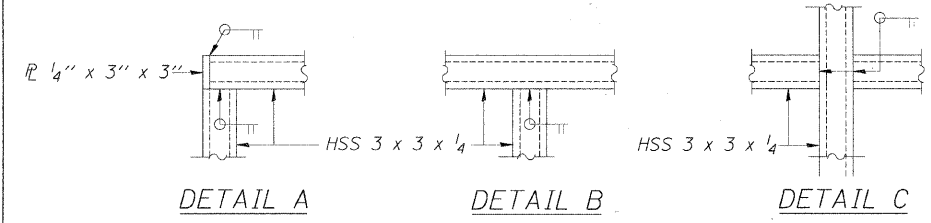
**PARAPET RAILING ELEVATION**  
(Inside Face of Three Element Rail)



**BASE PLATE**

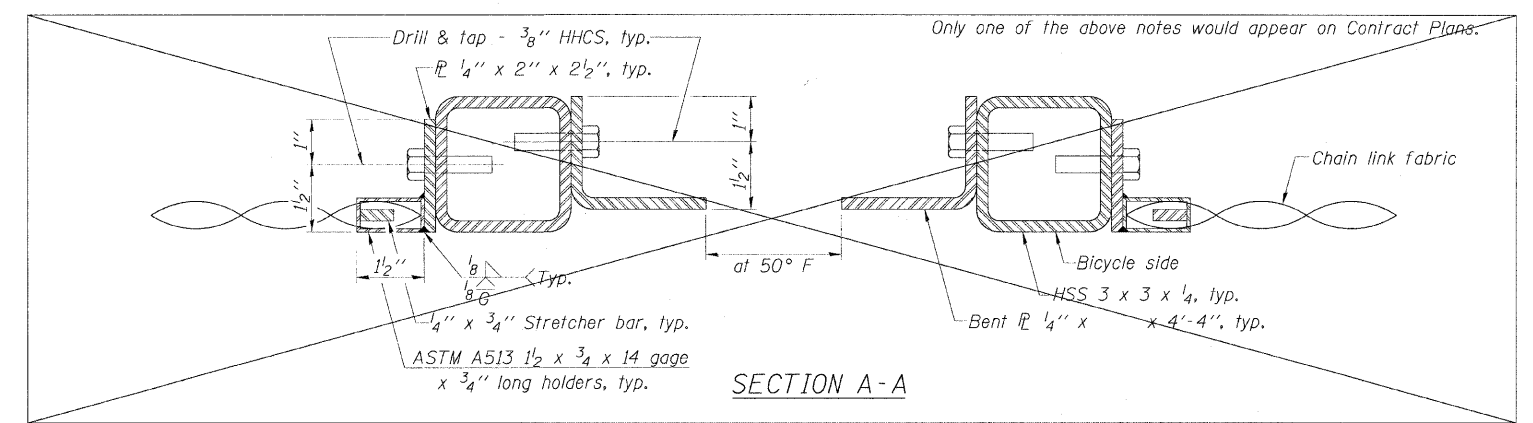


**RAIL SPLICE**

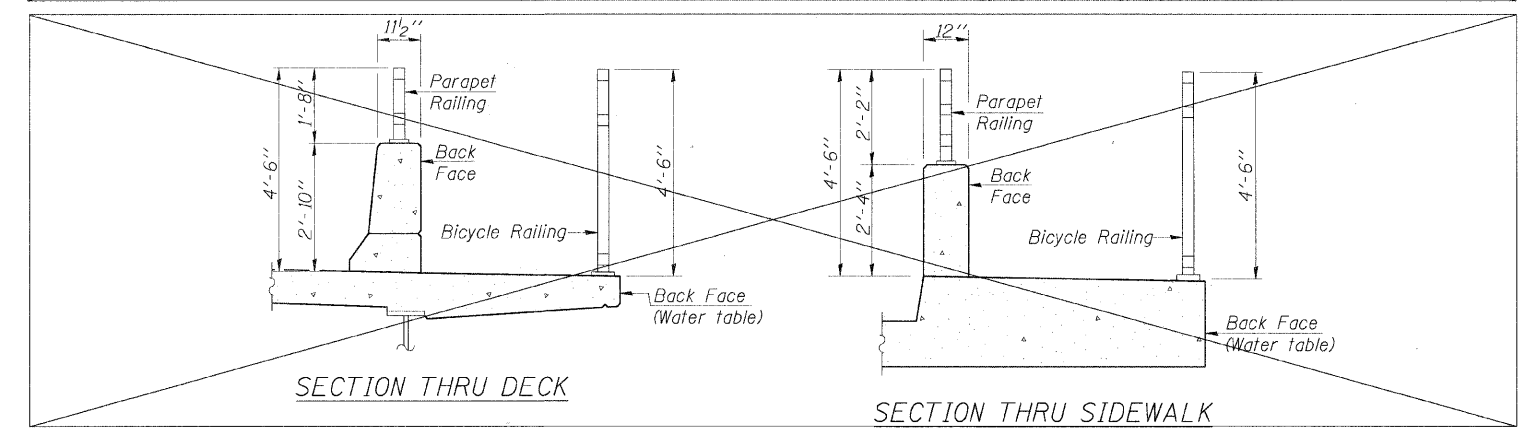


**DETAIL A**      **DETAIL B**      **DETAIL C**

**NOTE:**  
All steel rail elements shall be galvanized according to Article 509.05 of the Standard Specifications.

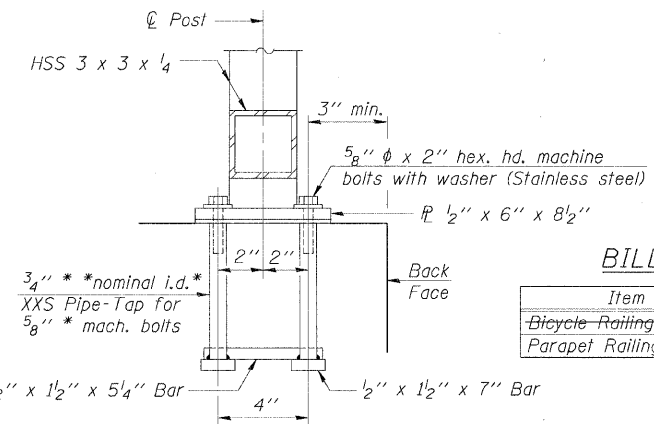
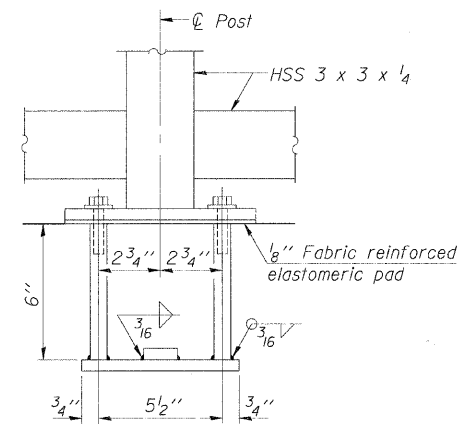


**SECTION A-A**



**SECTION THRU DECK**

**SECTION THRU SIDEWALK**



**ANCHOR BOLT DETAILS**

In lieu of the cast-in-place anchor device shown, the Contractor has the option of drilling and setting 5/8 inch diameter anchor rods according to Article 509.06 of the Standard Specifications. Embedment shall be according to the manufacturer's specifications.

**BILL OF MATERIAL**

Item	Unit	Quantity
Bicycle Railing	Foot	
Parapet Railing	Foot	280

**SHT. SB-6**

REVISIONS	
NAME	DATE

MCHENRY COUNTY DIVISION OF TRANSPORTATION  
WALKUP ROAD F.A.U. 0085  
SECTION 00-00246-01-FP  
STATION 92+30.00 TO 95+10.00  
RETAINING WALL

**PARAPET RAILING DETAILS**

SCALE:      DRAWN BY: MKD  
DATE: 08/17/09      CHECKED BY: TCG

**TENG**  
TENG & ASSOCIATES, INC.  
ENGINEERS/ARCHITECTS/PLANNERS  
205 N. MICHIGAN AVE., CHICAGO, IL 60601  
TELEPHONE: 312/658-0000