

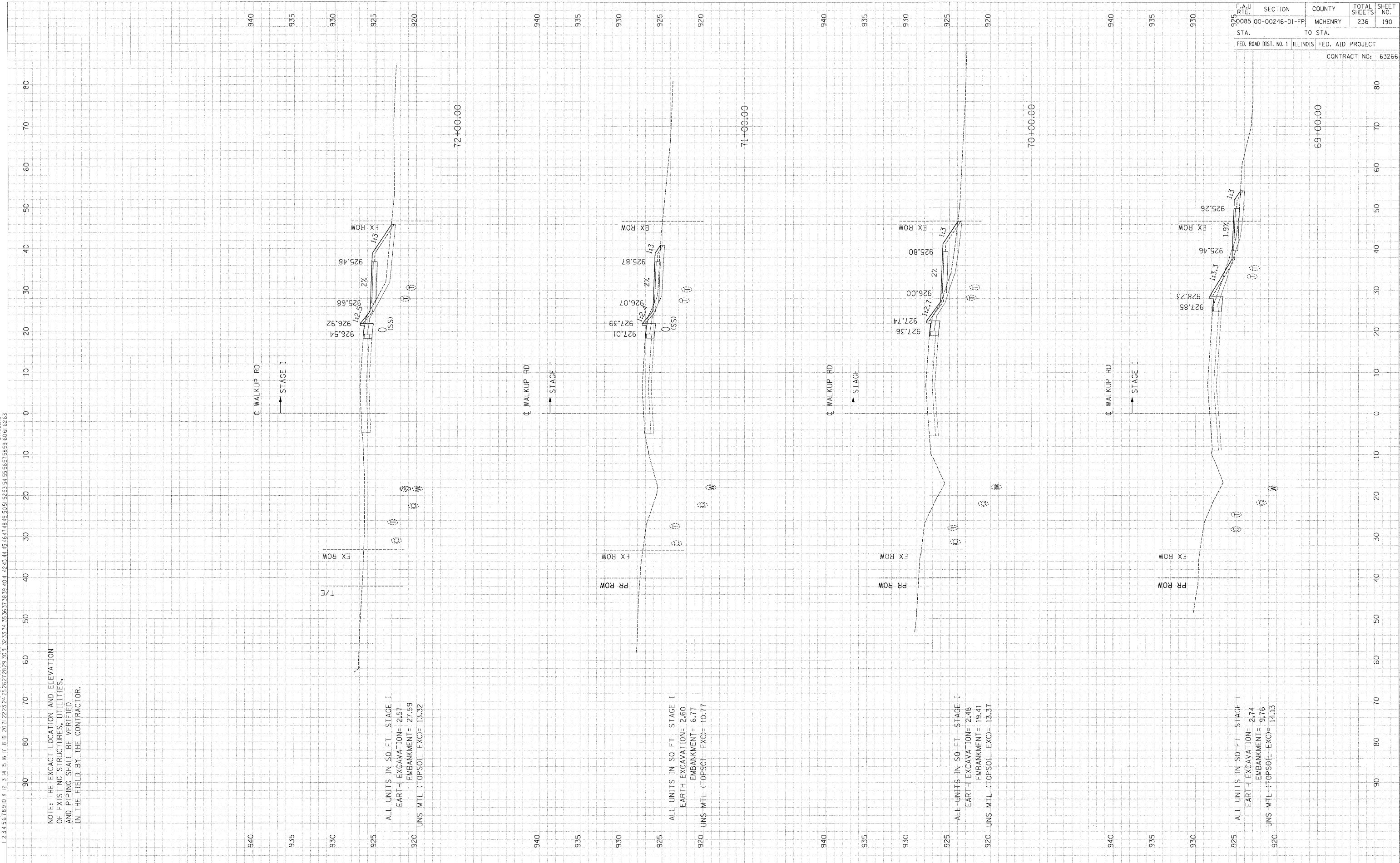
FINAL SURVEY	SURVEYED	BY	DATE
NOTE BOOK	PLOTTED		
NO.	TEMPLATE		
	AREAS CHECKED		

ORIGINAL SURVEY	SURVEYED	BY	DATE
NOTE BOOK	PLOTTED		
NO.	TEMPLATE		
	AREAS CHECKED		

\AL10080A.DGN, \1P0008R.DGN, \R000845.DGN, \R000846.DGN, \R000847.DGN, \R000848.DGN, \R000849.DGN, \R000850.DGN, \R000851.DGN, \R000852.DGN, \R000853.DGN, \R000854.DGN, \R000855.DGN, \R000856.DGN, \R000857.DGN, \R000858.DGN, \R000859.DGN, \R000860.DGN, \R000861.DGN, \R000862.DGN, \R000863.DGN, \R000864.DGN, \R000865.DGN, \R000866.DGN, \R000867.DGN, \R000868.DGN, \R000869.DGN, \R000870.DGN, \R000871.DGN, \R000872.DGN, \R000873.DGN, \R000874.DGN, \R000875.DGN, \R000876.DGN, \R000877.DGN, \R000878.DGN, \R000879.DGN, \R000880.DGN, \R000881.DGN, \R000882.DGN, \R000883.DGN, \R000884.DGN, \R000885.DGN, \R000886.DGN, \R000887.DGN, \R000888.DGN, \R000889.DGN, \R000890.DGN, \R000891.DGN, \R000892.DGN, \R000893.DGN, \R000894.DGN, \R000895.DGN, \R000896.DGN, \R000897.DGN, \R000898.DGN, \R000899.DGN, \R000900.DGN, \R000901.DGN, \R000902.DGN, \R000903.DGN, \R000904.DGN, \R000905.DGN, \R000906.DGN, \R000907.DGN, \R000908.DGN, \R000909.DGN, \R000910.DGN, \R000911.DGN, \R000912.DGN, \R000913.DGN, \R000914.DGN, \R000915.DGN, \R000916.DGN, \R000917.DGN, \R000918.DGN, \R000919.DGN, \R000920.DGN, \R000921.DGN, \R000922.DGN, \R000923.DGN, \R000924.DGN, \R000925.DGN, \R000926.DGN, \R000927.DGN, \R000928.DGN, \R000929.DGN, \R000930.DGN, \R000931.DGN, \R000932.DGN, \R000933.DGN, \R000934.DGN, \R000935.DGN, \R000936.DGN, \R000937.DGN, \R000938.DGN, \R000939.DGN, \R000940.DGN, \R000941.DGN, \R000942.DGN, \R000943.DGN, \R000944.DGN, \R000945.DGN, \R000946.DGN, \R000947.DGN, \R000948.DGN, \R000949.DGN, \R000950.DGN, \R000951.DGN, \R000952.DGN, \R000953.DGN, \R000954.DGN, \R000955.DGN, \R000956.DGN, \R000957.DGN, \R000958.DGN, \R000959.DGN, \R000960.DGN, \R000961.DGN, \R000962.DGN, \R000963.DGN, \R000964.DGN, \R000965.DGN, \R000966.DGN, \R000967.DGN, \R000968.DGN, \R000969.DGN, \R000970.DGN, \R000971.DGN, \R000972.DGN, \R000973.DGN, \R000974.DGN, \R000975.DGN, \R000976.DGN, \R000977.DGN, \R000978.DGN, \R000979.DGN, \R000980.DGN, \R000981.DGN, \R000982.DGN, \R000983.DGN, \R000984.DGN, \R000985.DGN, \R000986.DGN, \R000987.DGN, \R000988.DGN, \R000989.DGN, \R000990.DGN, \R000991.DGN, \R000992.DGN, \R000993.DGN, \R000994.DGN, \R000995.DGN, \R000996.DGN, \R000997.DGN, \R000998.DGN, \R000999.DGN, \R001000.DGN

NOTE: THE EXACT LOCATION AND ELEVATION OF EXISTING STRUCTURES, UTILITIES, AND PIPING SHALL BE VERIFIED IN THE FIELD BY THE CONTRACTOR.

F.A.U. R.T.E.	SECTION	COUNTY	TOTAL SHEETS	SHEET NO.
92085	00-00246-01-FP	MCHENRY	236	190
STA.	TO STA.		FED. ROAD DIST. NO. 1 ILLINOIS FED. AID PROJECT	
			CONTRACT NO: 63266	



ALL UNITS IN SQ. FT. STAGE I
 EARTH EXCAVATION= 2.57
 EMBANKMENT= 27.59
 UNS MTL (TOPSOIL EXC)= 13.32

ALL UNITS IN SQ. FT. STAGE I
 EARTH EXCAVATION= 2.60
 EMBANKMENT= 6.77
 UNS MTL (TOPSOIL EXC)= 10.77

ALL UNITS IN SQ. FT. STAGE I
 EARTH EXCAVATION= 2.48
 EMBANKMENT= 19.41
 UNS MTL (TOPSOIL EXC)= 13.37

ALL UNITS IN SQ. FT. STAGE I
 EARTH EXCAVATION= 2.74
 EMBANKMENT= 9.76
 UNS MTL (TOPSOIL EXC)= 14.13