

FINAL SURVEY	SURVEYED	BY	DATE
NOTE BOOK	PLOTTED		
NO.	TEMPLATE		
	AREAS CHECKED		

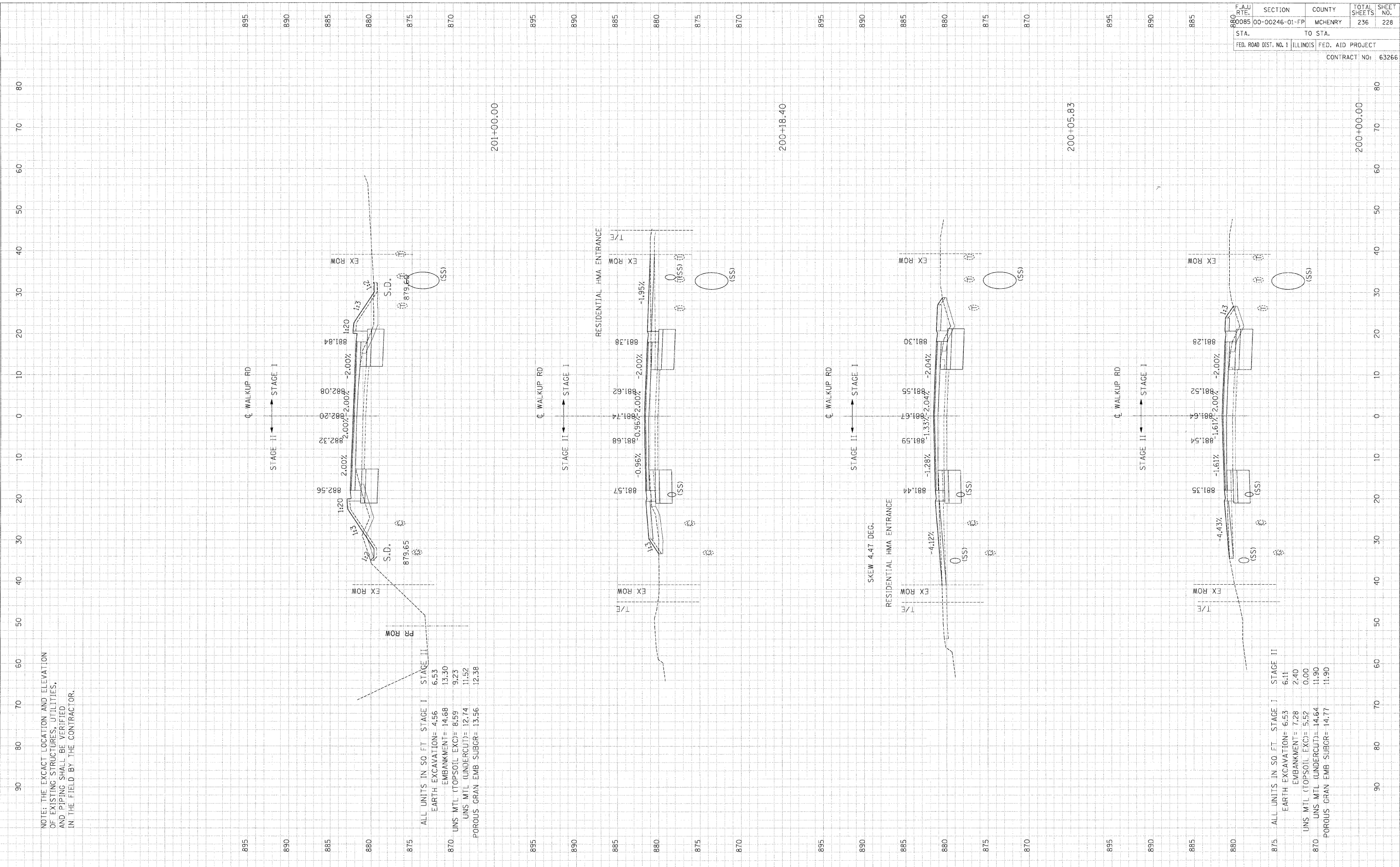
ORIGINAL SURVEY	SURVEYED	BY	DATE
NOTE BOOK	PLOTTED		
NO.	TEMPLATE		
	AREAS CHECKED		

\\VAL008\DALDEN...T\PC008\1.DGN...ROW008\1.DGN...URAD008\1.DGN...ASC008\1.DGN...VW008\1.DGN...UTL008\1.DGN...UTL008\1.DGN...UTL008\1.DGN...STANKRU...  
 8-14-2009, 15:32:22 T:\DOCUMENT\910003\CIVIL\DGN\YSC008\1.DGN...  
 1 2 3 4 5 6 7 8 9 10 11 12 13 14 15 16 17 18 19 20 21 22 23 24 25 26 27 28 29 30 31 32 33 34 35 36 37 38 39 40 41 42 43 44 45 46 47 48 49 50 51 52 53 54 55 56 57 58 59 60 61 62 63

NOTE: THE EXACT LOCATION AND ELEVATION  
 OF EXISTING STRUCTURES, UTILITIES,  
 AND PIPING SHALL BE VERIFIED  
 IN THE FIELD BY THE CONTRACTOR.

ALL UNITS IN SQ. FT. STAGE I STAGE II  
 EARTH EXCAVATION= 4.56 6.53  
 EMBANKMENT= 14.68 13.30  
 UNS MTL (TOPSOIL EXD)= 8.59 9.23  
 UNS MTL (UNDERCUT)= 12.74 11.52  
 POROUS GRAN EMB SUBGR= 13.56 12.38

F.A.U. NO.	SECTION	COUNTY	TOTAL SHEETS	SHEET NO.
880085	00-00246-01-FP	MCHENRY	236	228
STA.	TO STA.		FED. ROAD DIST. NO. 1 ILLINOIS FED. AID PROJECT	
			CONTRACT NO: 63266	



875 ALL UNITS IN SQ. FT. STAGE I STAGE II  
 EARTH EXCAVATION= 6.53 6.11  
 EMBANKMENT= 7.28 2.40  
 UNS MTL (TOPSOIL EXD)= 5.52 0.00  
 UNS MTL (UNDERCUT)= 14.64 11.90  
 POROUS GRAN EMB SUBGR= 14.77 11.90