

STATE OF ILLINOIS
DEPARTMENT OF TRANSPORTATION
DIVISION OF HIGHWAYS

PLANS FOR PROPOSED FEDERAL AID HIGHWAY

F. A. U. P.E.	SECTION	COUNTY	TOTAL SHEETS	SHEET NO.
2943	09-00033-00-LT	COOK	10	1
STA. 70+00	TO STA. 86+30			
FED. ROAD DIST. NO. 1	ILLINOIS	FED. AID PROJECT ARA-9003 (574)		

CONTRACT #63271

INDEX OF SHEETS

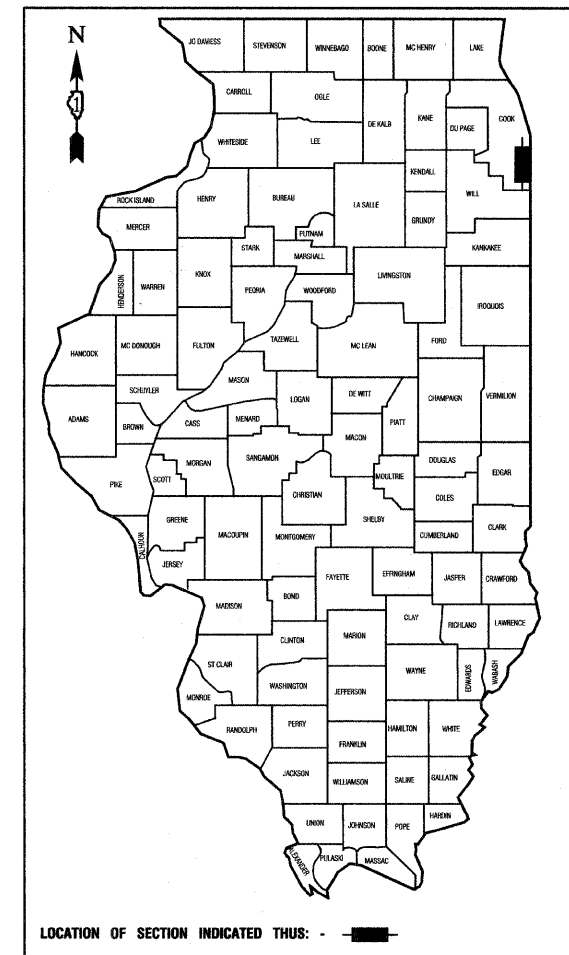
1. COVER SHEET
2. SUMMARY OF QUANTITIES & GENERAL NOTES
3. STREET LIGHTING PLANS
4. SINGLE LINE DIAGRAM
- 5.-10. DETAIL DRAWINGS

STATE STANDARDS

- 000001-05 STANDARD SYMBOLS, ABBREVIATIONS AND PATTERNS
- 701501-05 URBAN LANE CLOSURE, 2L, 2W, UNDIVIDED
- 701606-06 URBAN LANE CLOSURE, MULTILANE, 2W, WITH MOUNTABLE MEDIAN
- 701701-06 URBAN LANE CLOSURE, MULTILANE INTERSECTION
- 701801-04 LANE CLOSURE, MULTILANE 1W OR 2W CROSSWALK OR SIDEWALK CLOSURE
- 701901-01 TRAFFIC CONTROL DEVICES

FAU 2943 (BURNHAM AVENUE)
STREET LIGHTING
BRIDGE TO SOUTH OF BRAINARD AVENUE
SECTION NO.: 09-00033-00-LT
C-91-657-09
VILLAGE OF BURNHAM
COOK COUNTY
ARA-9003 (574)

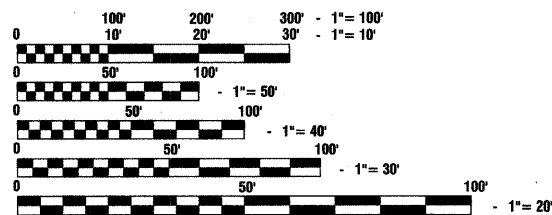
RANGE R 15 E



BURNHAM AVENUE COLLECTOR
ADT=13,900 (2009)
=13,900 (2030)
DESIGN SPEED=40 MPH
SPEED LIMIT= 40 MPH

SCALES

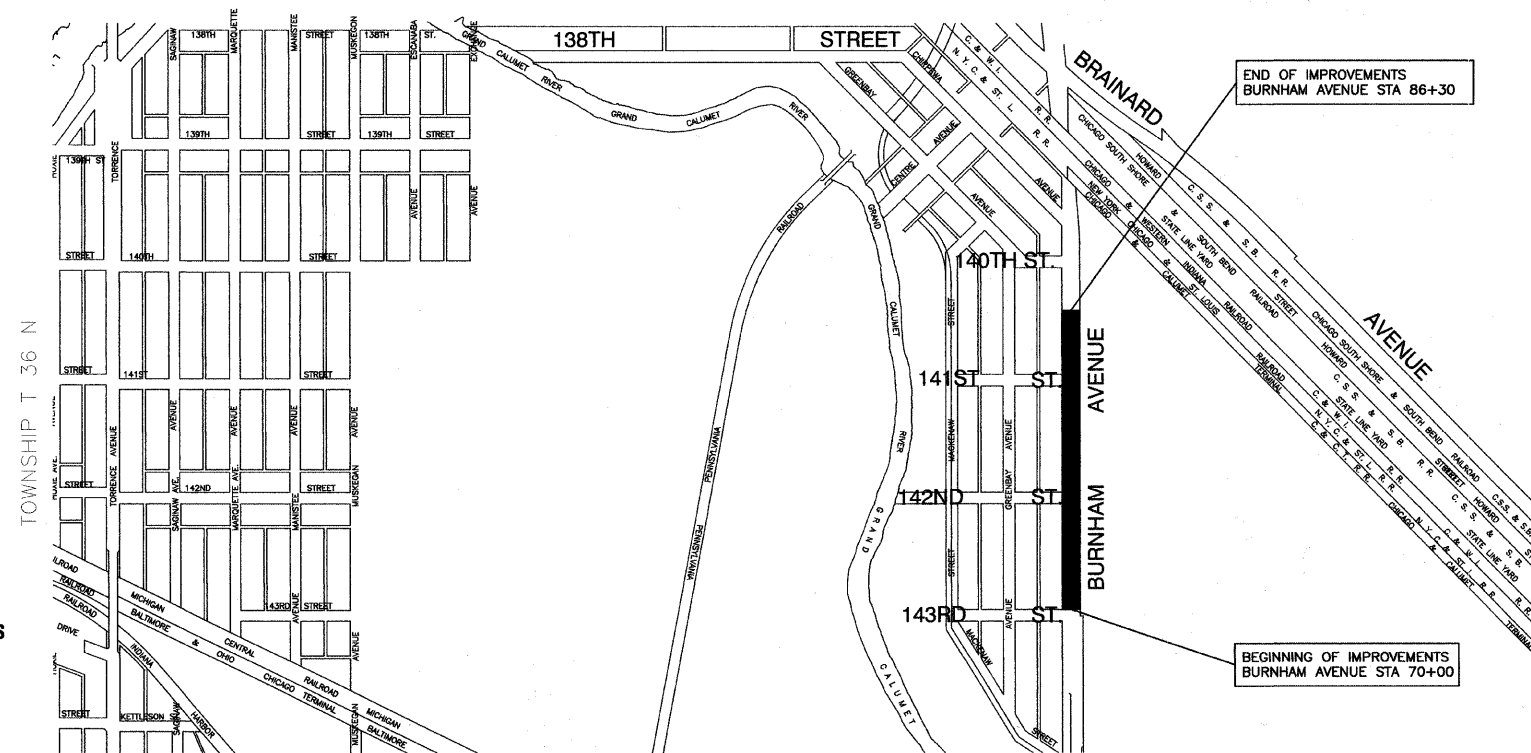
- PLAN - 1"=50'
- PROFILE HORIZ. - 1"=50'
- PROFILE VERT. - 1"=5'
- CROSS SECTIONS - 1"=10'



FULL SIZE PLANS HAVE BEEN PREPARED USING STANDARD ENGINEERING SCALES, REDUCED SIZED PLANS WILL NOT CONFORM TO STANDARD SCALES, IN MAKING MEASUREMENTS ON REDUCED PLANS, THE ABOVE SCALES MAY BE USED.

J. U. L. I. E.
JOINT UTILITY LOCATION INFORMATION FOR EXCAVATION
1-800-892-0123 or 811

CONTRACT NO. 63271



LOCATION MAP

- INDICATES PROPOSED IMPROVEMENT
GROSS LENGTH=1,630 FEET=0.31 MILES
NET LENGTH=1,630 FEET=0.31 MILES

STATE OF ILLINOIS DEPARTMENT OF TRANSPORTATION
DIVISION OF HIGHWAYS

Approved 12-8-2009
Robert E. Pels
President, Village of Burnham

Passed 12-10-2009
CT Holtz
District Engineer of Local Roads & Streets

Released for Bid
Based on Limited
Review DECEMBER 14, 2009
Diane M. O'Keefe
Deputy Director of Highways, Region 1 Engineer

PRINTED BY THE AUTHORITY OF
THE STATE OF ILLINOIS

PREPARED BY OR UNDER THE
DIRECT SUPERVISION OF:

Edward J. Tomalin
12-09-2009



I.D.O.T. FIELD ENGINEER: MELCHOR MANGOBA: 847-705-4408
CONSULTANTS: ROBINSON ENGINEERING, LTD. 708-331-6700