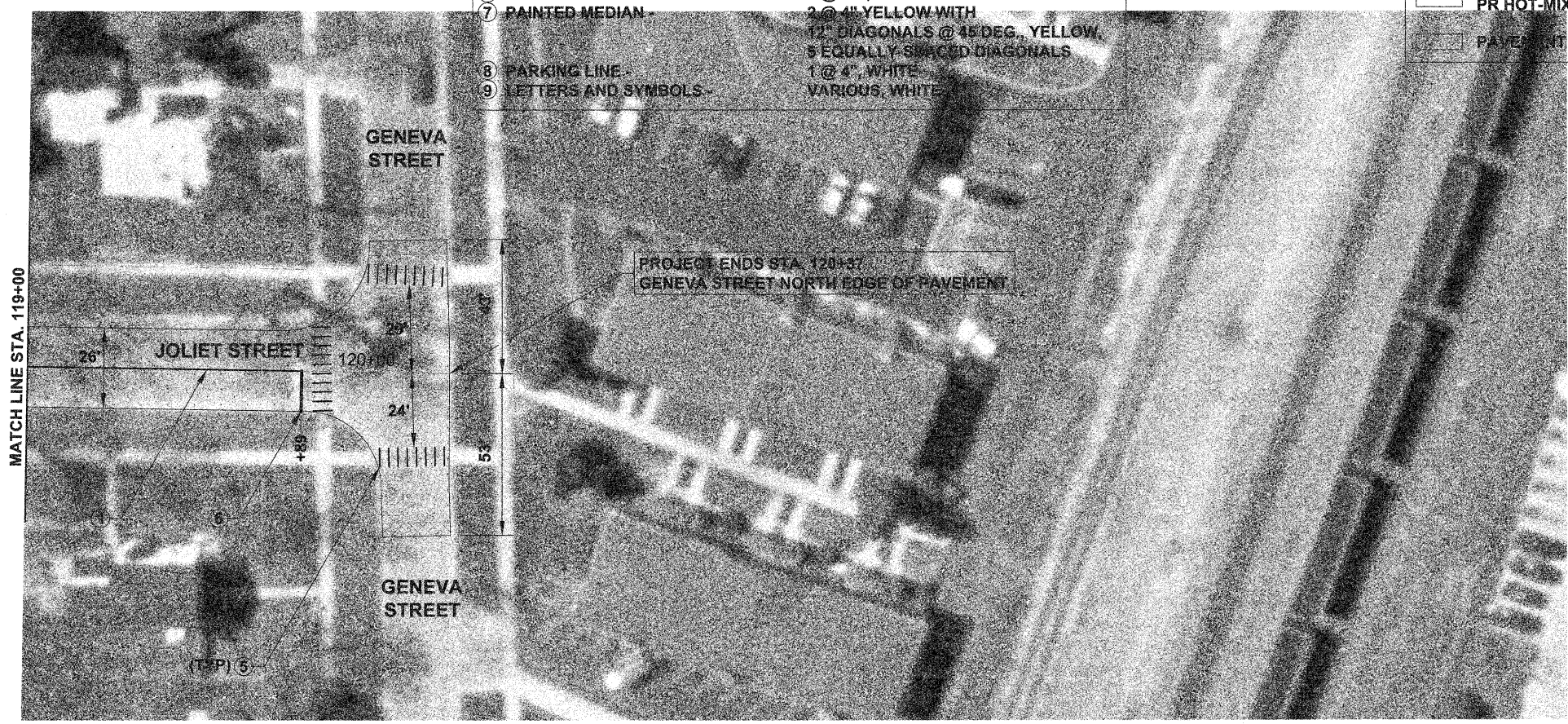


PR THERMOPLASTIC PAVEMENT MARKING LEGEND - NORTH OF IL RTE 59

1 CENTERLINE	2 @ 4" YELLOW	11" C.C.
2 DOTTED LINE	1 @ 6" WHITE	DASH 2 SKIP
3 TURN LANE LINE	1 @ 6" WHITE	
4 CROSSWALK LINE (PEDESTRIAN)	2 @ 6" WHITE	
5 CROSSWALK LINE (SCHOOL)	12" LINES @ 90 DEG., WHITE	
6 STOP LINE	1 @ 24", WHITE	
7 PAINTED MEDIAN	2 @ 4" YELLOW WITH	
	12" DIAGONALS @ 45 DEG., YELLOW,	
	5 EQUALLY SPACED DIAGONALS	
8 PARKING LINE	1 @ 4", WHITE	
9 LETTERS AND SYMBOLS	VARIOUS WHITE	

- PR HOT-MIX ASPHALT SURFACE REMOVAL - BUTT JOINT
- PR HOT-MIX ASPHALT SURFACE REMOVAL, 2"
- PR POLYMERIZED LEVELING BINDER (MM), IL-4.75, N50, 3/4"
- PR HOT-MIX ASPHALT SURFACE COURSE, MIX "D", N70, 1 1/2"
- PAVEMENT PATCH (SEE SHEET 2, NOTE 7)



FILE NAME = 10-14\_Plan Sheets\_Joliet N LAPP  
 PLOT DATE = 12/15/09

**thomas** engineering group  
 thomas engineering group, llc  
 238 south kenilworth avenue  
 suite 100  
 oak park, il 60302  
 phone: 708-533-1700

DESIGNED - BLP	REVISED -
DRAWN - BLP	REVISED -
CHECKED - DMM	REVISED -
DATE - 12/16/09	REVISED -

**STATE OF ILLINOIS  
 DEPARTMENT OF TRANSPORTATION**

**JOLIET STREET - IL RTE 59 TO GENEVA STREET**  
**PLAN SHEET**  
 SCALE: 1" = 50'  
 STA. 113+00 TO STA. 120+25

F.A.U. RTE.	SECTION	COUNTY	TOTAL SHEETS	SHEET NO.
2534	09-00074-00-RS	DUPAGE	22	14
CONTRACT NO. 63374				
FED. ROAD DIST. NO. 1	ILLINOIS	FED. AID PROJECT ARA-9003(405)		