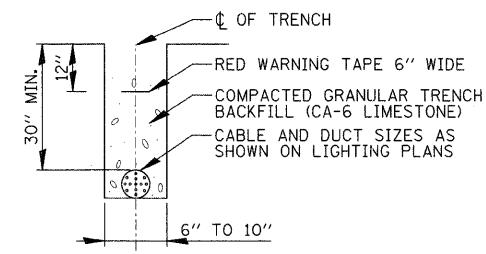


ROADWAY CROSSING

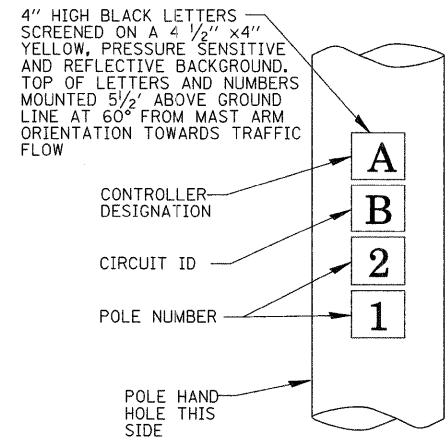
- ① SLEEVE SHALL BE HEAVY WALL RIGID GALVANIZED STEEL (RGS) CONDUIT.
- ② SLEEVE SHALL EXTEND A MINIMUM OF 2 FT. BEYOND BACK OF CURB.
- ③ SLEEVE SHALL BE A MINIMUM OF 30" BELOW ROADWAY OR CURB BOTTOM.

ELECTRIC CONDUIT INSTALLATION

N.T.S.



TRENCH CROSS SECTION

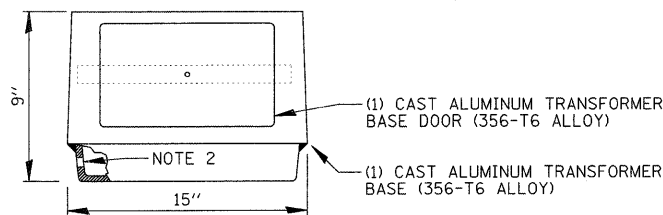


POLE IDENTIFICATION

N.T.S.

LUMINAIRE AND POLE SCHEDULE

LIGHT POLE IDENTIFIER	LUMINAIRE			LOCATION	
	WATTAGE	CKT ID	LUMINAIRE SHIELD	STATION	OFFSET
P1	400W	D	NO	56+95L	12.0' B.O.C.
P2	400W	D	NO	59+63L	6.0' B.O.C.
P3	400W	C	NO	61+50L	8.0' B.O.C.
P4	400W	D	NO	63+75L	8.0' B.O.C.
P5	400W	C	YES	51+60R	6.0' B.O.C.
P6	400W	D	YES	52+95R	6.0' B.O.C.
P7	400W	C	YES	54+40R	6.0' B.O.C.
P8	400W	D	YES	55+80R	9.5' B.O.C.
P9	400W	C	NO	56+65R	7.0' B.O.C.
P10	400W	D	NO	58+85R	6.0' B.O.C.
P11	400W	C	NO	59+63R	6.0' B.O.C.
P12	400W	D	NO	61+50R	6.0' B.O.C.
P13	400W	A	NO	23+95L	6.0' B.O.C.
P14	400W	B	NO	22+10L	6.0' B.O.C.
P15	400W	A	NO	20+05L	11.0' B.O.C.
P16	400W	B	NO	18+67L	6.0' B.O.C.
P17	400W	A	NO	16+75L	6.0' B.O.C.
P18	400W	B	NO	15+85L	6.0' B.O.C.
P19	400W	A	NO	14+10L	6.0' B.O.C.
P20	400W	A	NO	22+10R	6.0' B.O.C.
P21	400W	B	NO	20+05R	6.0' B.O.C.
P22	400W	A	NO	19+30R	10.0' B.O.C.
P23	400W	B	NO	17+30R	4.0' B.O.C.
P24	400W	A	NO	15+85R	4.0' B.O.C.
P25	400W	B	NO	14+10R	4.0' B.O.C.
P26	400W	A	NO	11+95R	6.0' B.O.C.

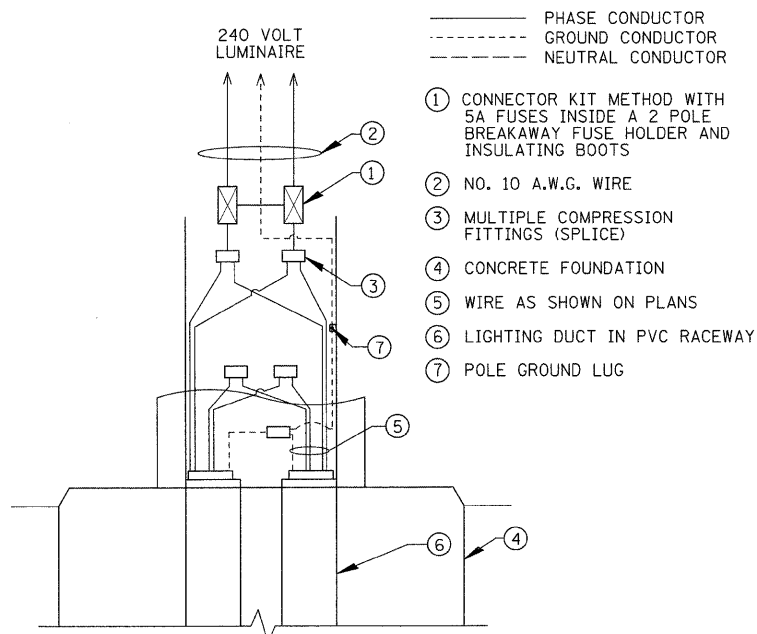


NOTES:

1. BEFORE INSTALLATION OF BREAKAWAY BASE, USER SHOULD CONSULT WITH AUTHORIZED DISTRIBUTOR REGARDING USERS PROPOSED APPLICATION, LOAD REQUIREMENTS AND INSTALLATION METHODS. FAILURES CAN RESULT FROM USERS MISAPPLICATION OR IMPROPER INSTALLATION. TO APPROACH OPTIMUM STATIC LOADS, USE THE LARGEST POSSIBLE BOLT CIRCLES. BREAKAWAY DEVICE SHALL BE IN ACCORDANCE WITH ARTICLE 1070.04(B) OF THE STANDARD SPECIFICATIONS.
2. DRILLED AND TAPPED 1/2" -13 UNC HOLE FOR GROUND CONNECTOR.

TRANSFORMER BASE DETAILS

N.T.S.



POLE HANDHOLE WIRING DIAGRAM

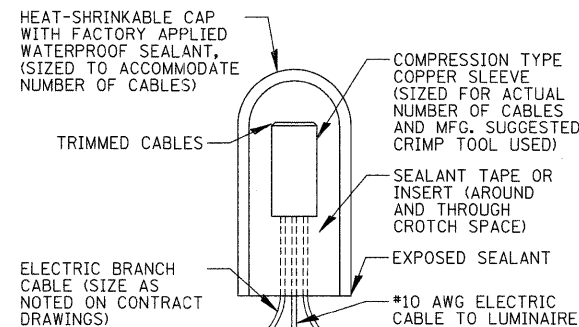
N.T.S.

LUMINAIRE MODEL NO.

MANUFACTURER A	GENERAL ELECTRIC MODEL NO. MDCA-40-S-0-A-1-2-F-MC3-1-U;
MANUFACTURER B	HUBBEL MODEL NO. RLCD-40S38-031-1-2-5FO-M53;

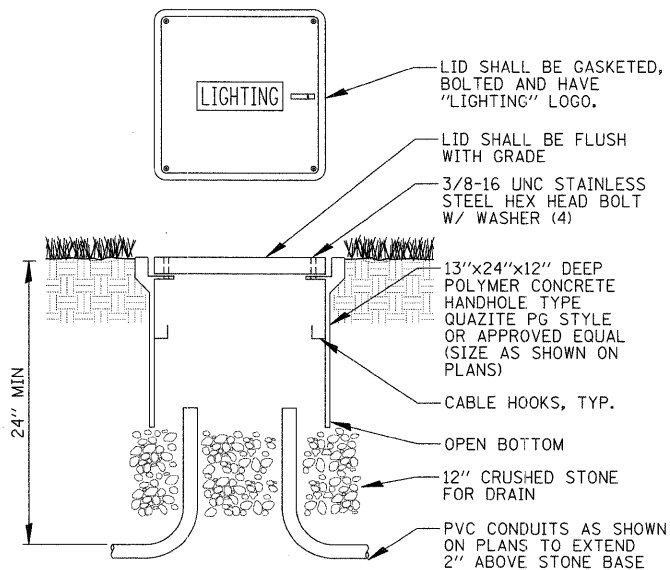
NOTES:

1. ALL LUMINAIRES SHALL HAVE A MULTI-TAP BALLAST WIRED FOR 240 VOLTS OPERATION, AND A 4 BOLT SLIPFITTER.



SPlicing ELECTRIC CABLE

N.T.S.

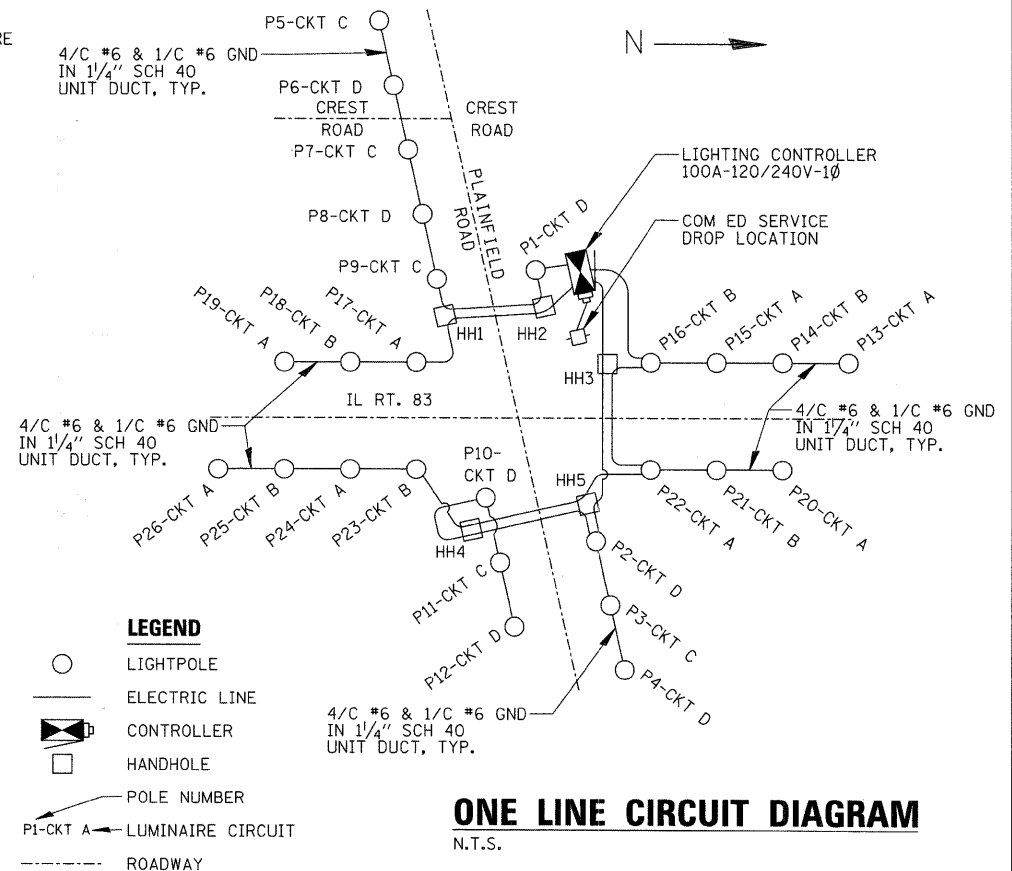


NOTES:

1. NO SPLICES ALLOWED IN CONCRETE HANDHOLES.
2. BOX & LID SHALL MEET/EXCEED ANSI TIER 15 LOADING REQUIREMENTS AND BE UL LISTED.

COMPOSITE CONCRETE HANDHOLE

N.T.S.



LEGEND

- LIGHTPOLE
- ELECTRIC LINE
- ⊠ CONTROLLER
- HANDHOLE
- POLE NUMBER
- ← LUMINAIRE CIRCUIT
- ROADWAY

ONE LINE CIRCUIT DIAGRAM

N.T.S.

FILE NAME =	USER NAME = ADERICCO	DESIGNED = A/JD	REVISED = -
Na:\WILLowBROOK\090244\Mech\090244_1.Ltd	DRAWN = KWB	CHECKED = A/JD	REVISED = -
	PLOT SCALE = 20'	DATE = 11-17-2009	REVISED = -
	PLOT DATE = 11/25/2009		

**STATE OF ILLINOIS
DEPARTMENT OF TRANSPORTATION**

**IL RT. 83 AND PLAINFIELD ROAD INTERSECTION LIGHTING
INTERSECTION LIGHTING DETAILS (2 OF 3)**

SCALE: N.T.S. SHEET NO. 5 OF 6 SHEETS STA. TO STA.

CHRISTOPHER B. BURKE ENGINEERING, LTD.				
9575 W. Higgins Road, Suite 600 Rosemont, Illinois 60018 (847) 823-0500				
F.A.U. RTE.	SECTION	COUNTY	TOTAL SHEETS	SHEET NO.
0344	09-0020-00-LT	DUPAGE	8	6
				CONTRACT NO. 63402
FED. ROAD DIST. NO. 1 (ILLINOIS) FED. AID PROJECT				