

FOR INDEX OF SHEETS, SEE SHEET NO. 2

PROJECT LOCATED IN THE VILLAGE OF CARY

**STATE OF ILLINOIS
DEPARTMENT OF TRANSPORTATION
DIVISION OF HIGHWAYS
PLANS FOR PROPOSED
FEDERAL AID HIGHWAY
F.A.P. 0305 U.S. ROUTE 14 (NORTHWEST HIGHWAY) AND
F.A.U. ROUTE 3877 EAST MAIN STREET
RIGHT-TURN LANE, TRAFFIC SIGNALS AND ARRA RESURFACING IMPROVEMENTS**

SECTION NO.: 08-00054-00-CH
PROJECT NO.: M-ARA-9003(313)
JOB NO.: C-91-619-09

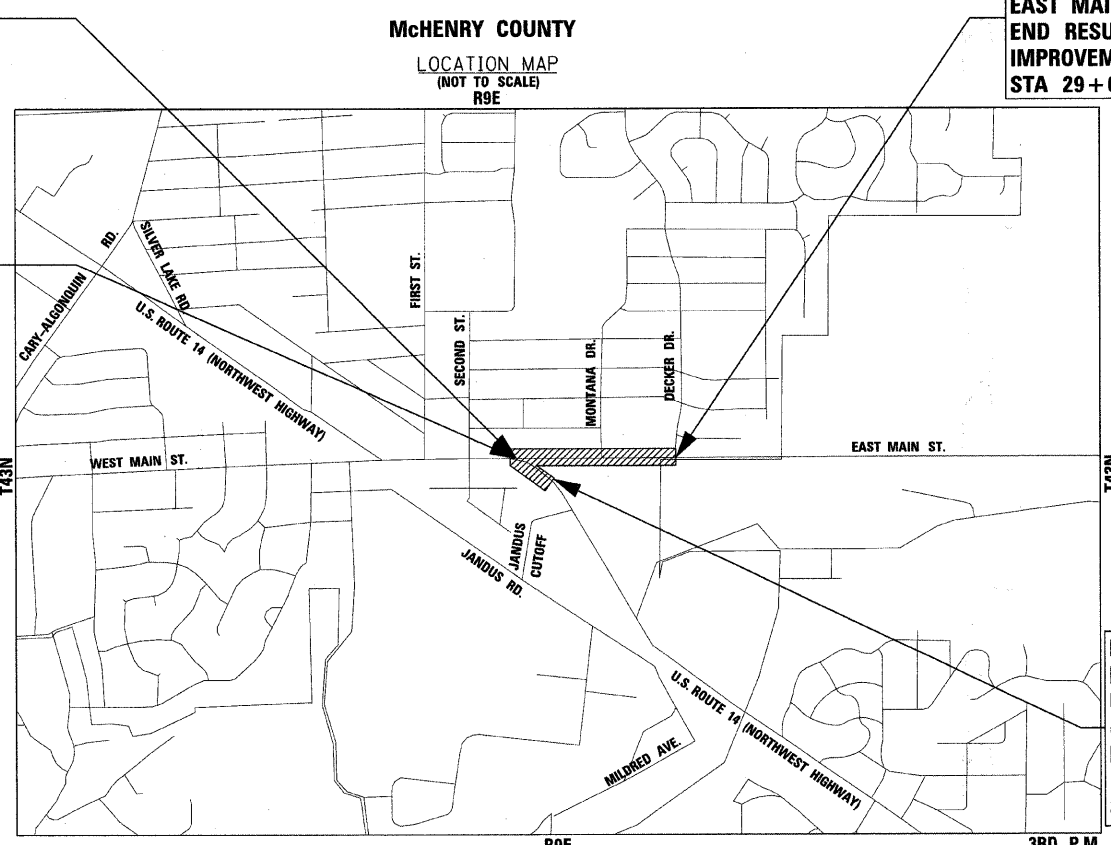
F.A.U. RTE.	SECTION	COUNTY	TOTAL SHEETS	SHEET NO.
08-00054-00-CH		McHENRY	56	1
STA.		TO STA.		
FED. ROAD DIST. NO. 1 C-91-619-09	ILLINOIS	FED AID PROJECT M-ARA-9003(313)		
F.A.P. 0305 U.S. ROUTE 14 AND F.A.U. 3877 EAST MAIN STREET CONTRACT NO: 63404				

PROJECT NO.: M-ARA-9003(313)
F.A.U. ROUTE 3877
EAST MAIN STREET
BEGIN RESURFACING
IMPROVEMENTS
STA 10 + 29

PROJECT NO.: M-ARA-9003(313)
F.A.P. ROUTE 0305
U.S. ROUTE 14
(NORTHWEST HIGHWAY)
BEGIN RIGHT-TURN LANE
IMPROVEMENTS
STA 182 + 00

PROJECT NO.: M-ARA-9003(313)
F.A.U. ROUTE 3877
EAST MAIN STREET
END RESURFACING
IMPROVEMENTS
STA 29 + 00

PROJECT NO.: M-ARA-9003(313)
F.A.P. ROUTE 0305
U.S. ROUTE 14
(NORTHWEST HIGHWAY)
END RIGHT-TURN LANE
IMPROVEMENTS
STA 185 + 30



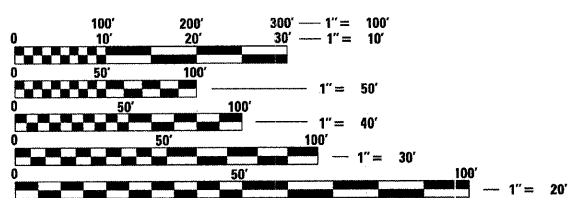
ALGONQUIN TOWNSHIP
GROSS LENGTH OF IMPROVEMENT = 2,201 LF OR 0.417 MILES
NET LENGTH OF IMPROVEMENT = 2,201 LF OR 0.417 MILES

COPYRIGHT © 2009, BY BAXTER & WOODMAN, INC.
STATE OF ILLINOIS - PROFESSIONAL DESIGN FIRM
LICENSE NO. - 184-001121 - EXPIRES 4/30/2011

TRAFFIC DATA

U.S. ROUTE 14 (NORTHWEST HIGHWAY)
POSTED & DESIGN SPEED = 35 MPH
2009 ADT = 36,600 VPD
OTHER PRINCIPAL ARTERIAL

EAST MAIN STREET
POSTED & DESIGN SPEED = 30 MPH
2009 ADT = 6,300 VPD
COLLECTOR

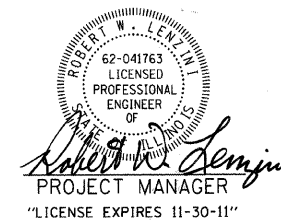


FULL SIZE PLANS HAVE BEEN PREPARED USING STANDARD
ENGINEERING SCALES. REDUCED SIZED PLANS WILL NOT
CONFORM TO STANDARD SCALES. IN MAKING MEASUREMENTS
ON REDUCED PLANS, THE ABOVE SCALES MAY BE USED.

J.U.L.I.E. DESIGN STAGE REQUEST
DIG. No. X0840787



CONTACT JULIE AT 811 OR 800-892-0123
WITH THE FOLLOWING:
COUNTY = McHENRY
CITY-TOWNSHIP = CARY-ALGONQUIN
SEC. & 1/4 SEC. NO. = SEC 18 NW & NE 1/4, T43N, R9E
48 HOURS (2 working days) BEFORE YOU DIG



CONTRACT NO: 63404

Burlington, Wisconsin	Chicago, Illinois	Crystal Lake, Illinois	DeKalb, Illinois	Grayslake, Illinois	Itasca, Illinois	Madison, Wisconsin	Mokena, Illinois	Plainfield, Illinois
262.763.7834	312.578.0050	815.459.1260	815.787.3111	847.223.5088	630.773.1870	608.347.1542	708.478.2090	815.609.7425
(OFFICE WHICH PREPARED PLANS)								

**STATE OF ILLINOIS
DEPARTMENT OF TRANSPORTATION
DIVISION OF HIGHWAYS**

APPROVED 11-17-09
[Signature]
VILLAGE OF CARY, DIRECTOR OF PUBLIC WORKS

PASSED DECEMBER 5 2009
[Signature]
DISTRICT 1 ENGINEER OF LOCAL ROADS AND STREETS

RELEASING FOR BID
BASED ON LIMITED
REVIEW DECEMBER 4 2009
[Signature]
DEPUTY DIRECTOR OF HIGHWAYS, REGION 1 ENGINEER

**PRINTED BY THE AUTHORITY
OF THE STATE OF ILLINOIS**

COPYRIGHT © 2009, BY BAXTER & WOODMAN, INC.
 STATE OF ILLINOIS - PROFESSIONAL DESIGN FIRM
 LICENSE NO. - 184-001121 - EXPIRES 4/30/2011
 ASSOCIATE FIELD ENGINEER: KEVIN STALLWORTH, P.E. 7847-705-4169