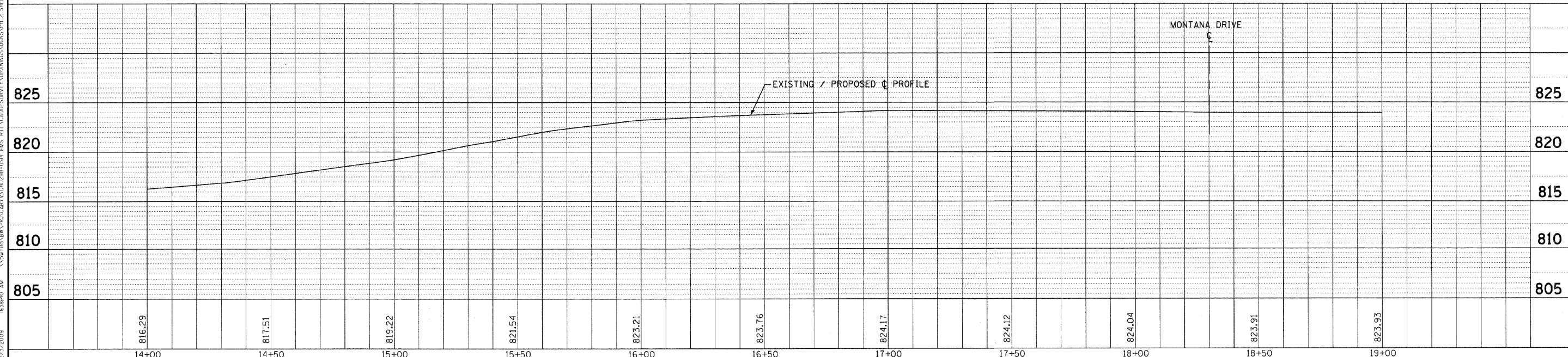


EAST MAIN ST



COPYRIGHT © 2009 BY BAXTER & WOODMAN, INC.
 STATE OF ILLINOIS - PROFESSIONAL DESIGN FIRM
 LICENSE NO. 184-00101 - EXPIRES 4/30/2011
 427/27/2009 - 184047 AU - 184047 AU



DESIGNED - MWP	REVISED - MCDPD REVIEW 11/3/09
DRAWN - CJC	REVISED - IDOT REVIEW 11/17/09
CHECKED - RWL	REVISED -
DATE - 09/11/09	FILE - 080298-PP3.shp

VILLAGE CARY, ILLINOIS
U.S. ROUTE 14 AT EAST MAIN STREET RIGHT-TURN LANE STP
AND EAST MAIN STREET ARRA IMPROVEMENTS

PLAN AND PROFILE
EAST MAIN STREET
 SCALE: H: 1"=20' V: 1"=5'
 STA. 14+00 TO STA. 19+00

F.A. RTE.	SECTION	COUNTY	TOTAL SHEETS	SHEET NO.
•	08-00054-00-CH	MCHENRY	56	15
C-91-619-09			CONTRACT NO. 63404	
FED. ROAD DIST. NO. 1 [ILLINOIS] FED. AID PROJECT W-ARA-9003(313)				
• F.A.P. ROUTE 0305 U.S. ROUTE 14 (NORTHWEST HIGHWAY)				
• F.A.U. ROUTE 3877 EAST MAIN STREET				