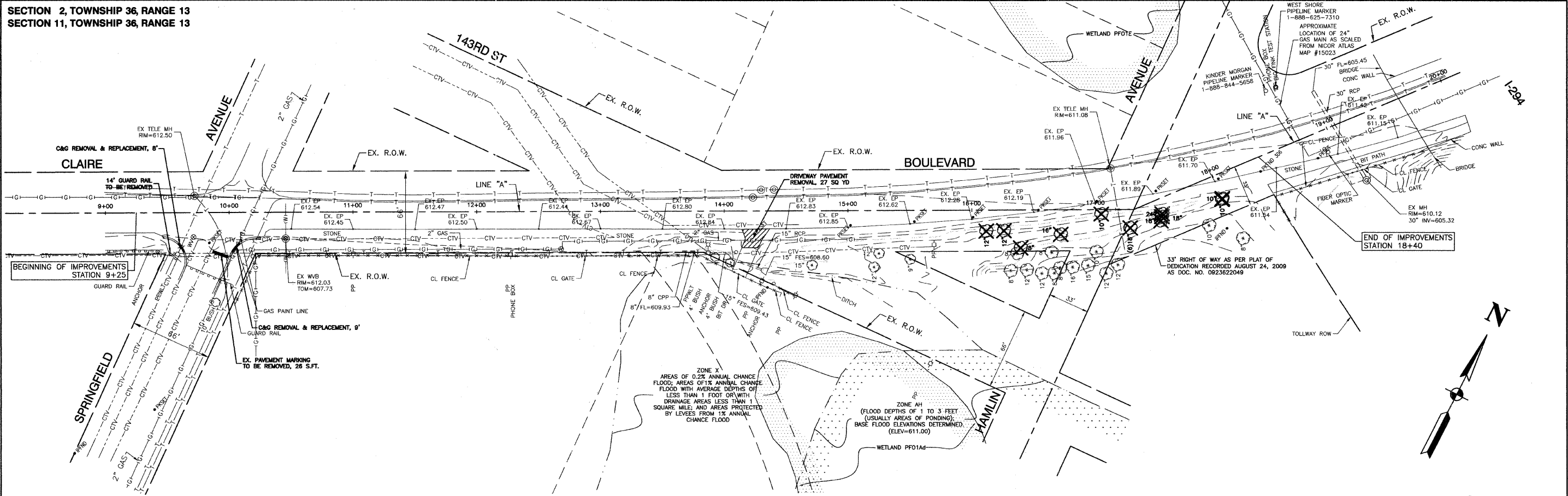
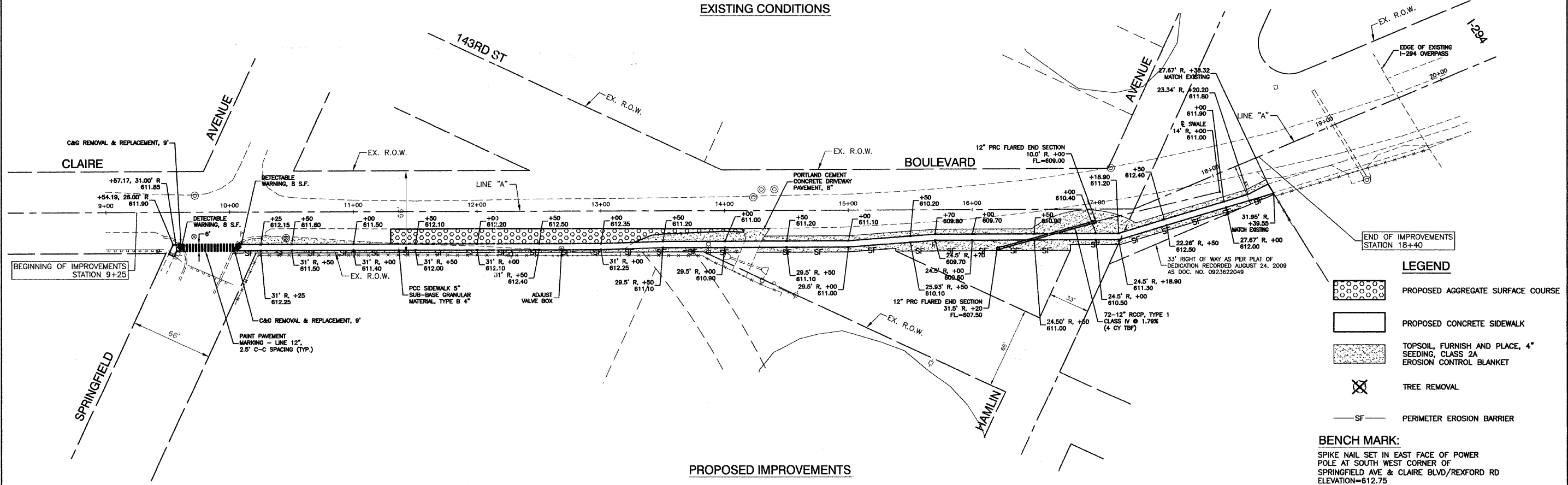


SECTION 2, TOWNSHIP 36, RANGE 13
SECTION 11, TOWNSHIP 36, RANGE 13



EXISTING CONDITIONS



PROPOSED IMPROVEMENTS

- LEGEND**
- PROPOSED AGGREGATE SURFACE COURSE
 - PROPOSED CONCRETE SIDEWALK
 - TOPSOIL, FURNISH AND PLACE, 4" SEEDING, CLASS 2A EROSION CONTROL BLANKET
 - TREE REMOVAL
 - PERIMETER EROSION BARRIER

BENCH MARK:
SPIKE NAIL SET IN EAST FACE OF POWER POLE AT SOUTH WEST CORNER OF SPRINGFIELD AVE & CLAIRE BLVD/REXFORD RD ELEVATION=612.75

FILE NAME = 05612_03-PLAN-01 - P01 40 SCALE 10-08-09	USER NAME =	DESIGNED -- JP	REVISED --	STATE OF ILLINOIS DEPARTMENT OF TRANSPORTATION	CLAIRE BOULEVARD SAFE ROUTE TO SCHOOL PROGRAM PLAN SHEET		F.A.U. RTE. 1008	SECTION 06-00162-03-SW	COUNTY COOK	TOTAL SHEETS 10	SHEET NO. 3	
PLOT SCALE =	DRAWN -- PS/KWM	CHECKED -- LSG/MN	REVISED --		SCALE: 1"=40'	SHEET NO. 3 OF 10 SHEETS	STA. TO STA.	CONTRACT NO. 63405				
PLOT DATE = 11-30-09	CHECKED -- PS/KWM	REVISED --			FED. ROAD DIST. NO. 1 ILLINOIS FED. AID PROJECT CMM-9003 (080)							