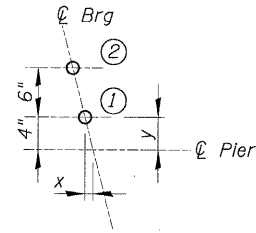
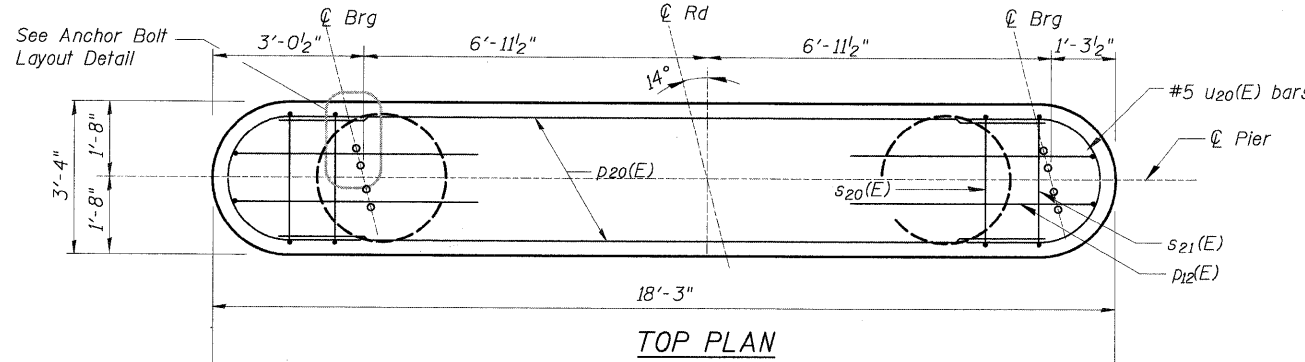


STATE OF ILLINOIS
DEPARTMENT OF TRANSPORTATION

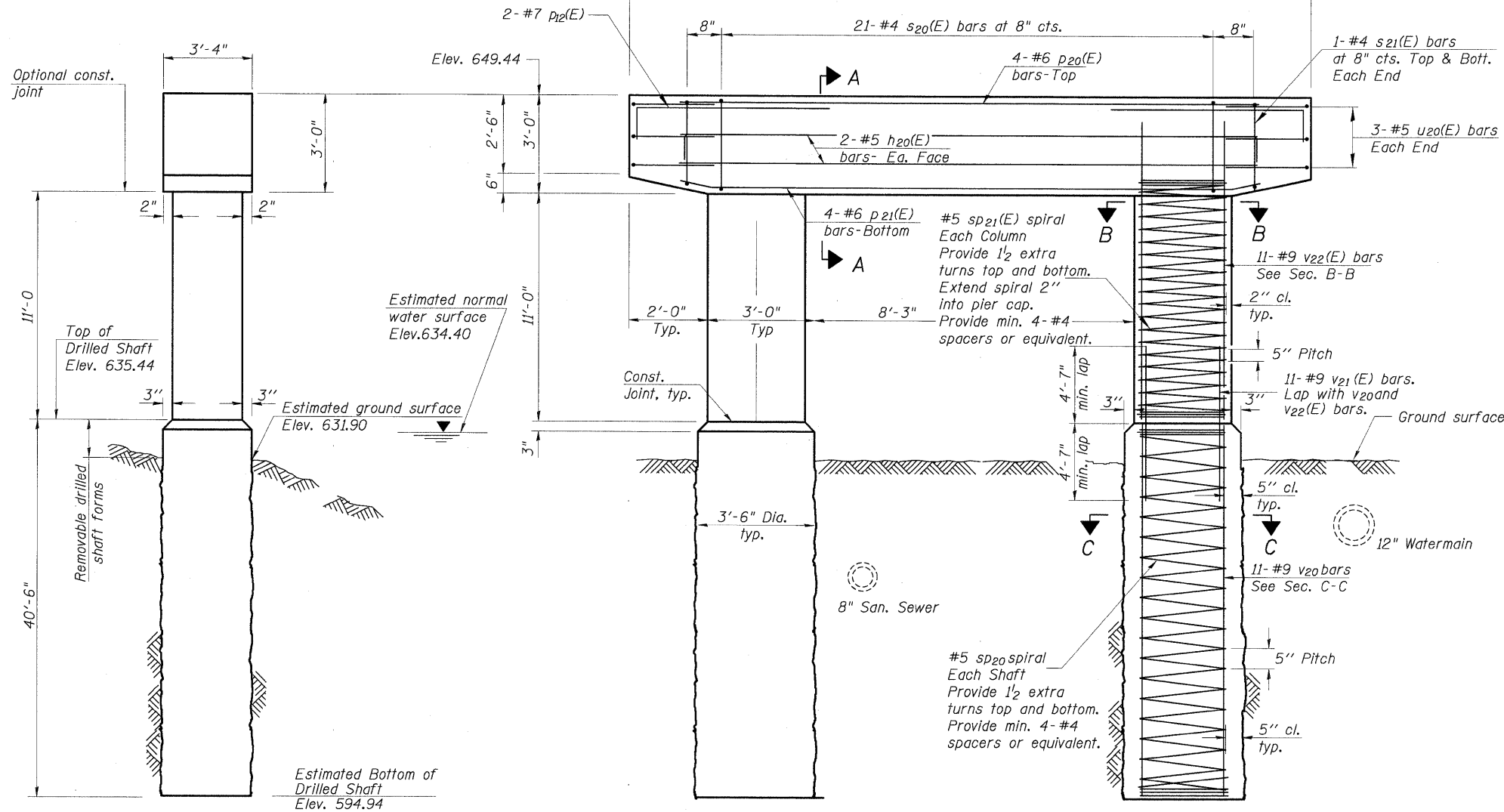
	x	y
1	1"	4"
2	2.5"	10"



ANCHOR BOLT LAYOUT DETAIL

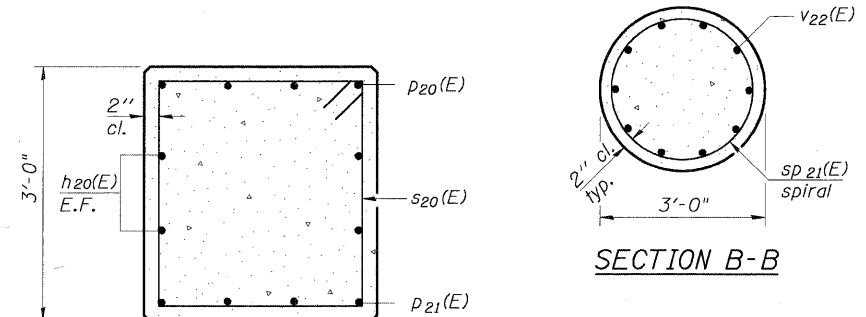


TOP PLAN

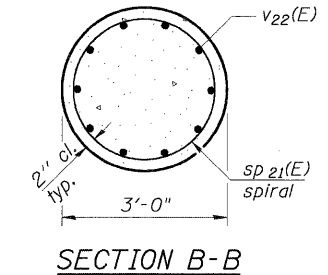


ELEVATION
(Looking East)

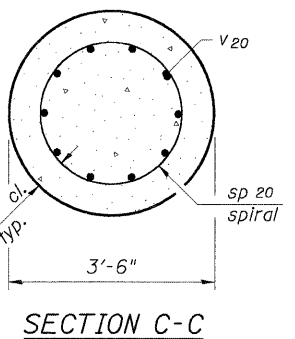
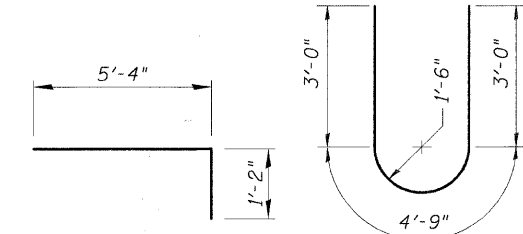
* If the prevailing water surface elevation during construction is consistently different than estimated on the plans, the contractor may propose an adjustment to the top of the drilled shaft elevation as part of their installation procedure. The top of all drilled shafts within a substructure unit shall be constructed to the same elevation and extend above the prevailing water surface. The quantities and reinforcement detailing are based on the top of shaft and the estimated elevations shown and may change based on the actual elevations encountered at each shaft and the final top of shaft elevation.



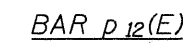
SECTION A-A



SECTION B-B



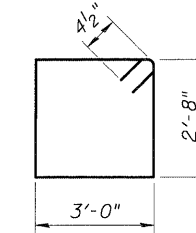
SECTION C-C



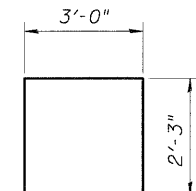
BAR p12(E)



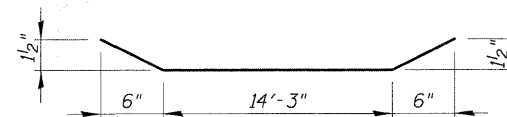
BAR u20(E)



BAR s20(E)



BAR s21(E)



BAR p21(E)

BILL OF MATERIAL

Bar	No.	Size	Length	Shape
h20(E)	4	#5	14'-11"	—
p12(E)	4	#7	6'-6"	—
p20(E)	4	#6	14'-11"	—
p21(E)	4	#6	15'-3"	—
s20(E)	21	#4	12'-1"	□
s21(E)	4	#4	7'-6"	□
sp20	2	#5	40'-6"	~
sp21(E)	2	#5	11'-3"	~
u20(E)	6	#5	10'-9"	U
v20	11	#9	40'-6"	—
v21(E)	11	#9	9'-6"	—
v22(E)	11	#9	13'-8"	—
Concrete Structures			Cu. Yd.	12.2
Reinforcement Bars, Epoxy Coated			Pound	1940
Reinforcement Bars			Pounds	3240
Drilled Shaft in Soil			Cu. Yd.	29

Space cap reinforcement to miss anchor bolts.
Minimum lap for spirals = 2'-6"
** Length is height of spiral.

PIER 2 DETAILS
DEERFIELD ROAD BIKE PATH
OVER DES PLAINES
SEC. 04-00038-03-BR
LAKE COUNTY
STATION 4+77.30
STRUCTURE NO.

DESIGNED	200
CHECKED	EXAMINED
DRAWN	PASSED
CHECKED	ENGINEER OF BRIDGES AND STRUCTURES

SHEET NO. S-5 SHEETS	F.A.U. RTE.	SECTION	COUNTY	TOTAL SHEETS	SHEET NO.
	1257	04-00038-03-BR	LAKE	44	24
	CONTRACT NO. 63408				
FED. ROAD DIST. NO. 1 ILLINOIS FED. AID PROJECT					