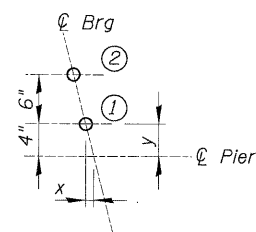
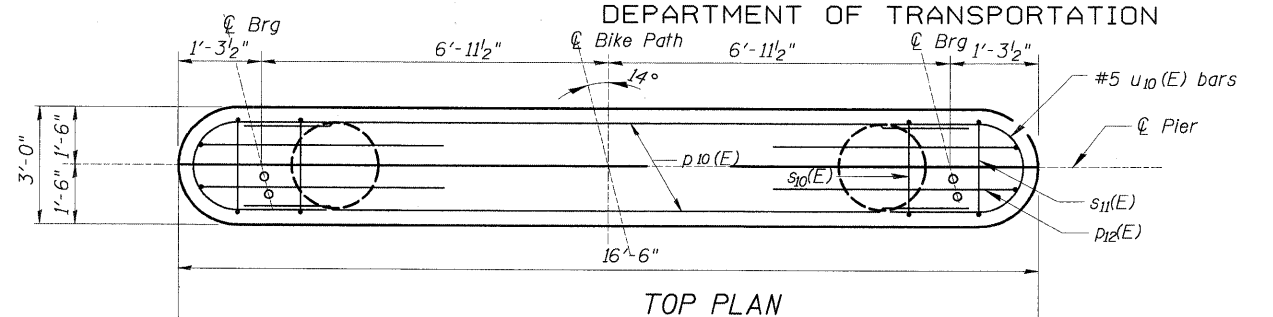


STATE OF ILLINOIS  
DEPARTMENT OF TRANSPORTATION

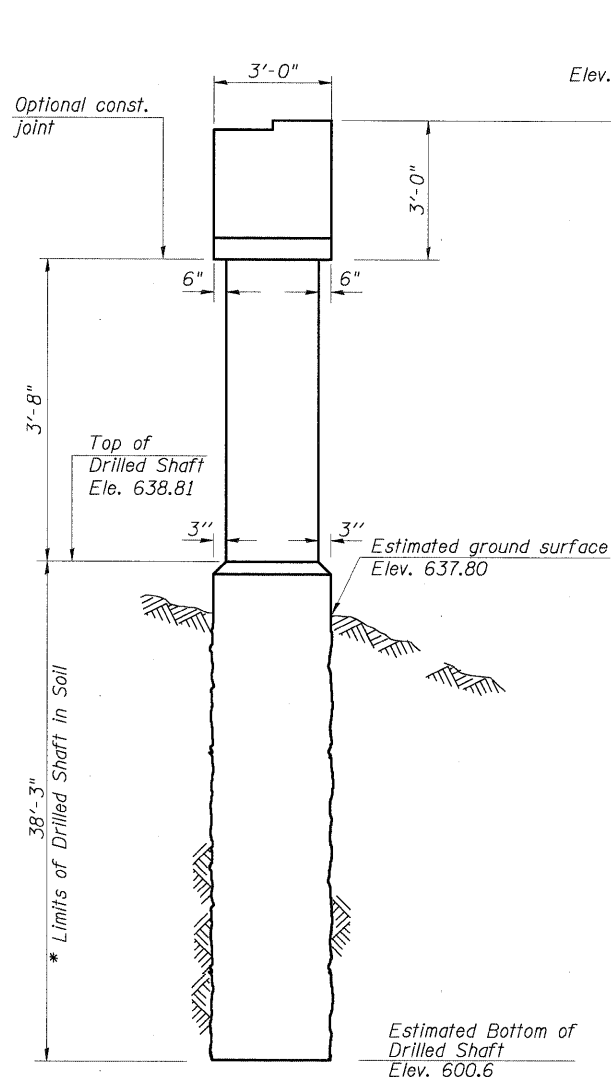
	x	y
1	1"	4"
2	2.5"	10"



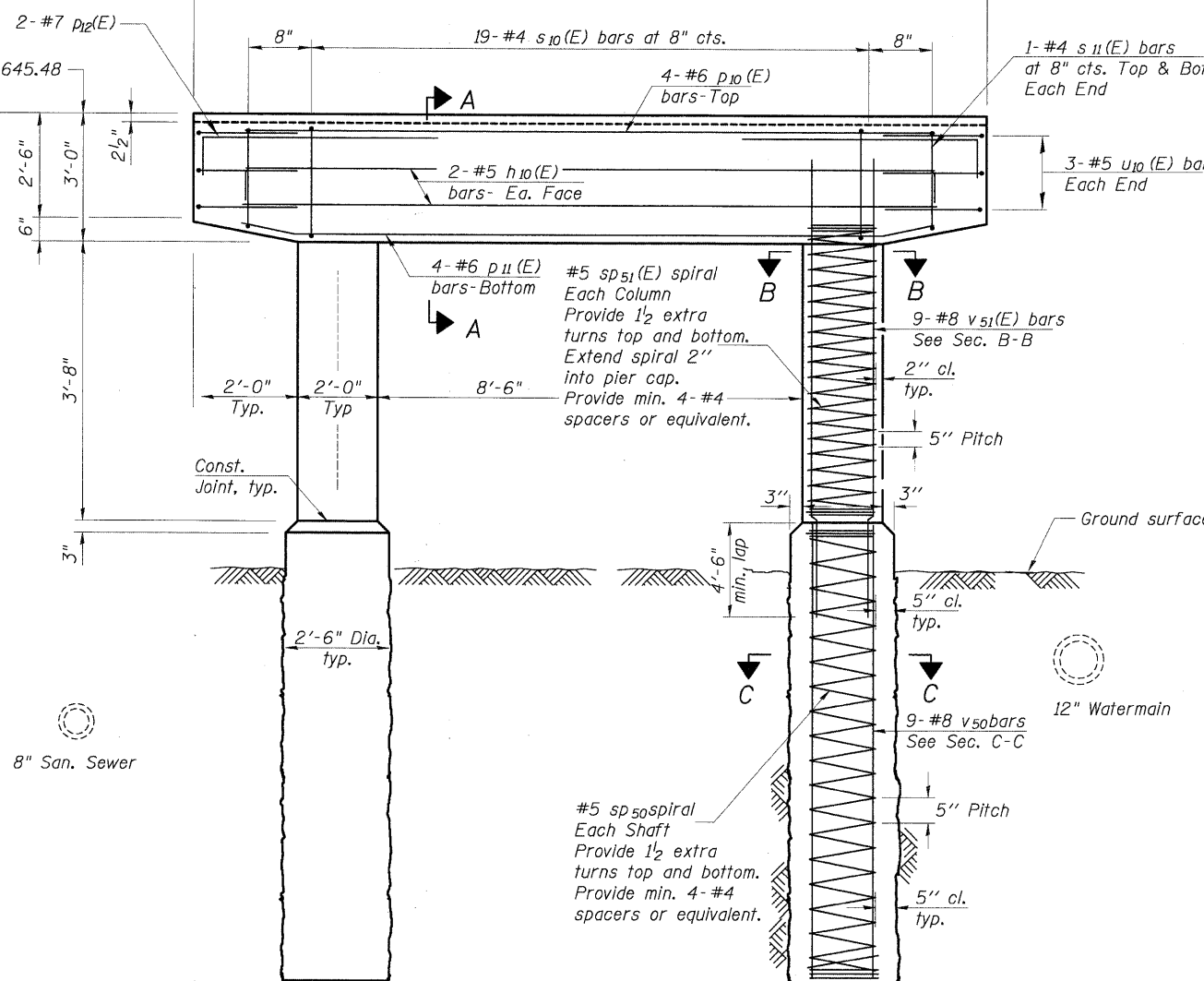
ANCHOR BOLT LAYOUT DETAIL



TOP PLAN

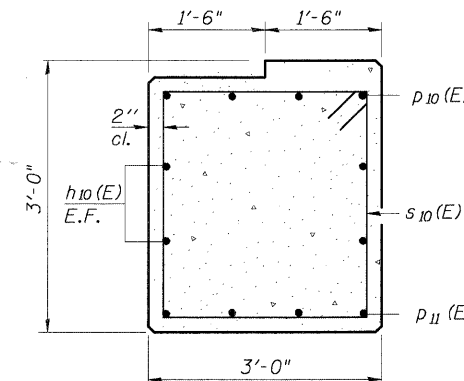


END VIEW

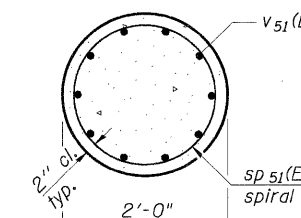


ELEVATION  
(Looking East)

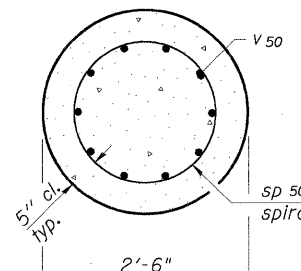
\* If the prevailing water surface elevation during construction is consistently different than estimated on the plans, the contractor may propose an adjustment to the top of the drilled shaft elevation as part of their installation procedure. The top of all drilled shafts within a substructure unit shall be constructed to the same elevation and extend above the prevailing water surface. The quantities and reinforcement detailing are based on the top of shaft and the estimated elevations shown and may change based on the actual elevations encountered at each shaft and the final top of shaft elevation.



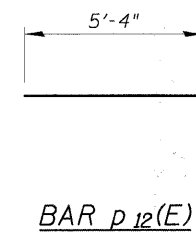
SECTION A-A



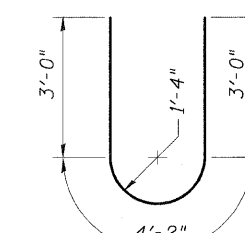
SECTION B-B



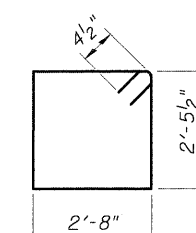
SECTION C-C



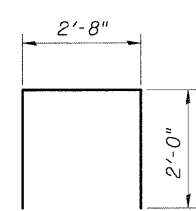
BAR P12(E)



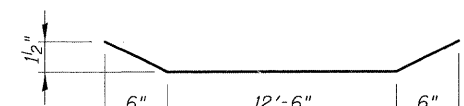
BAR U10(E)



BAR S10(E)



BAR S11(E)



BAR P11(E)

BILL OF MATERIAL

Bar	No.	Size	Length	Shape
h10(E)	4	#5	13'-6"	—
p10(E)	4	#6	13'-6"	—
p11(E)	4	#6	13'-6"	—
p12(E)	4	#7	13'-6"	—
s10(E)	19	#4	10'-11"	⊓
s11(E)	4	#4	6'-8"	⊓
sp50	2	#5	38'-3"	⋈
sp51(E)	2	#5	3'-10"	⋈
u10(E)	6	#5	10'-2"	⊓
v50	9	#8	38'-3"	—
v51(E)	9	#8	9'-6"	—
Concrete Structures			Cu. Yd.	6.2
Reinforcement Bars, Epoxy Coated			Pound	850
Reinforcement Bars			Pounds	1930
Drilled Shaft in Soil			Cu. Yd.	14

Cast steps monolithically with cap. Space cap reinforcement to miss anchor bolts. Minimum lap for spirals = 2'-6"

\*\* Length is height of spiral.

DESIGNED	200
CHECKED	EXAMINED
DRAWN	PASSED
CHECKED	ENGINEER OF BRIDGES AND STRUCTURES

SHEET NO. S-8 SHEETS	F.A.U. RTE.	SECTION	COUNTY	TOTAL SHEETS	SHEET NO.
	1257	04-00038-03-BR	LAKE	44	27
	CONTRACT NO. 63408				
FED. ROAD DIST. NO. 1 ILLINOIS FED. AID PROJECT					

PIER 5 DETAILS  
DEERFIELD ROAD BIKE PATH  
OVER DES PLAINES  
SEC. 04-00038-03-BR  
LAKE COUNTY  
STATION 4+77.30  
STRUCTURE NO.