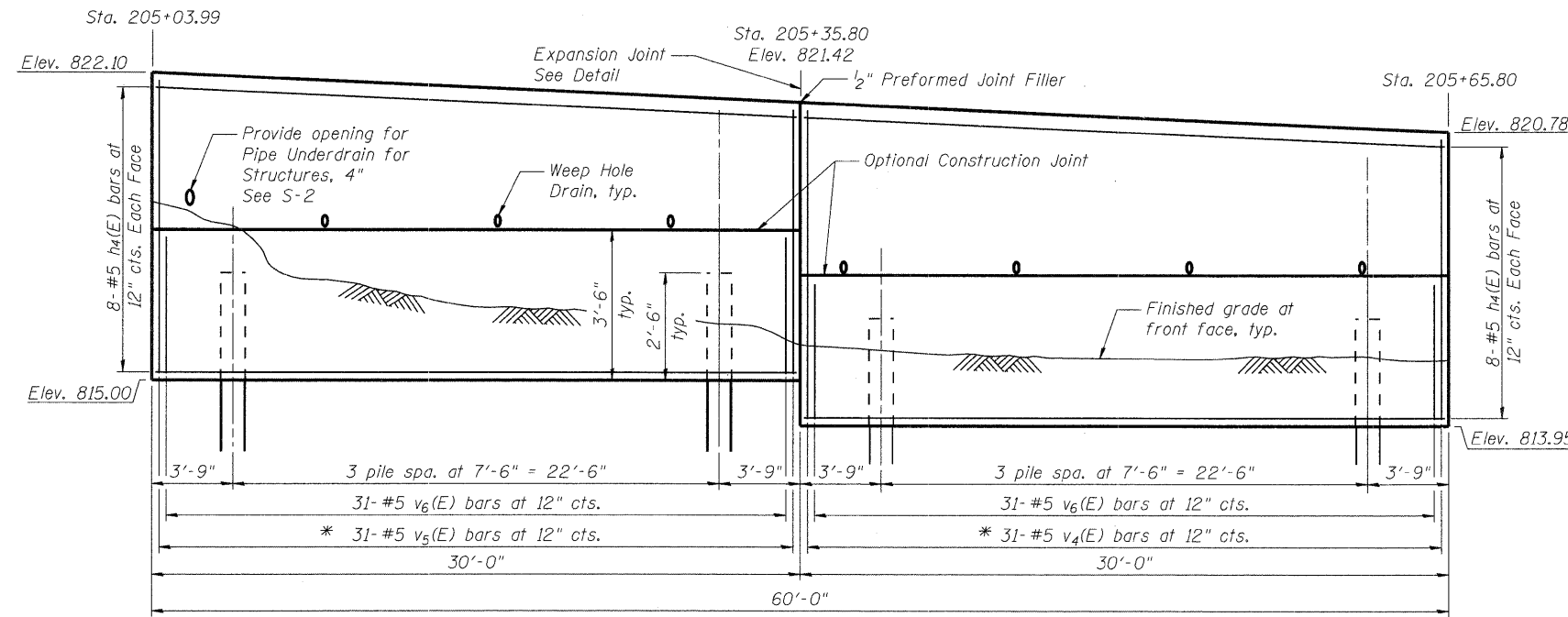
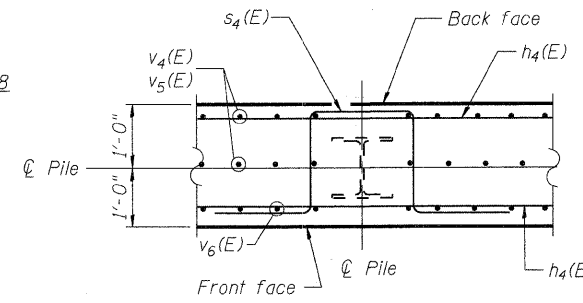


BILL OF MATERIAL

Bar	No.	Size	Length	Shape
h ₄ (E)	32	# 5	29'-8"	—
s ₄ (E)	32	# 5	9'-4"	⌒
v ₄ (E)	31	# 5	13'-8"	—
v ₅ (E)	31	# 5	12'-10"	—
v ₆ (E)	62	# 5	3'-2"	—
Structure Excavation		Cu. Yd.	34.0	
Reinforcement Bars, Epoxy Coated		Pound	2,360	
Concrete Structures		Cu. Yd.	23.0	
Furnishing Steel piles HP 14X73		Foot	200	
Driving Piles		Foot	200	



ELEVATION



PILE DETAIL

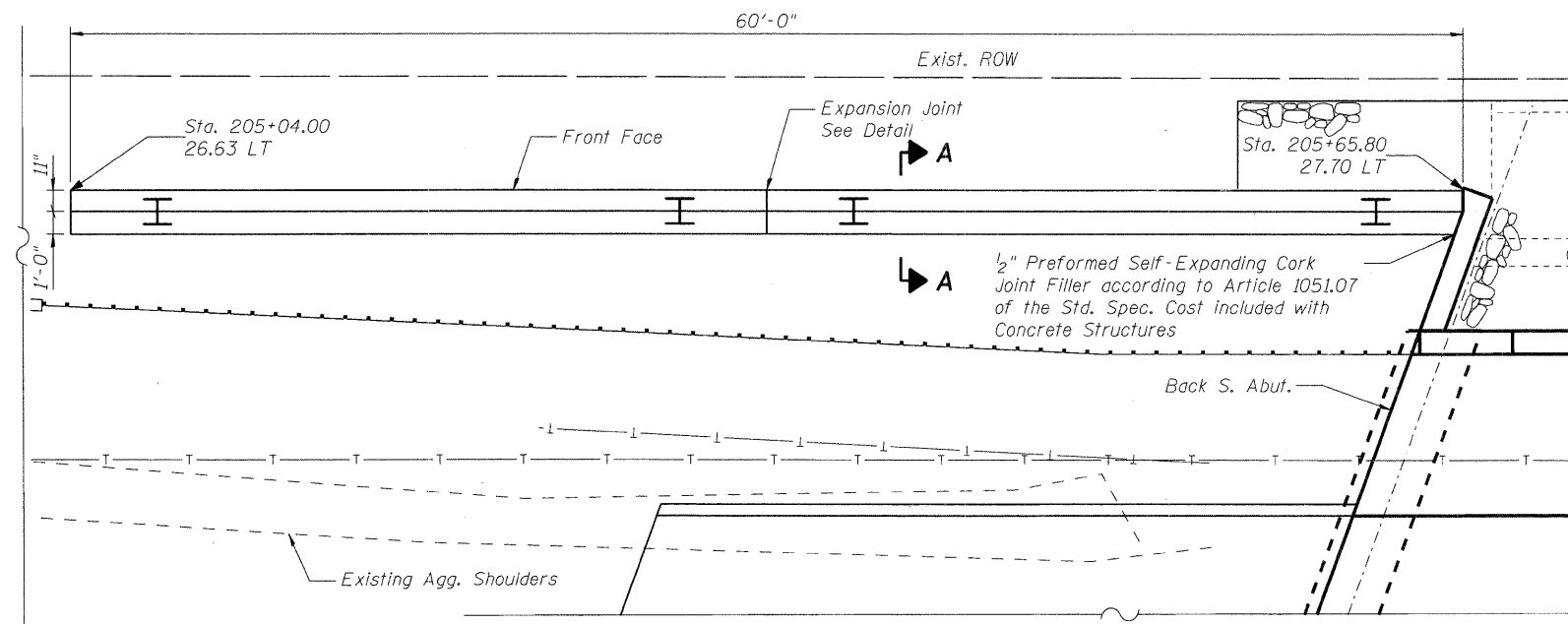
PILE DATA

Type: Steel HP 14x73
 Nominal Required Bearing: 96 kips
 Allowable Resistance Available: 32 kips
 Est. Minimum Length: 25' *
 No. Production Piles: 8
 No. Test Piles: 0
 * Minimum Embedment = 22'-6" regardless of meeting required capacity

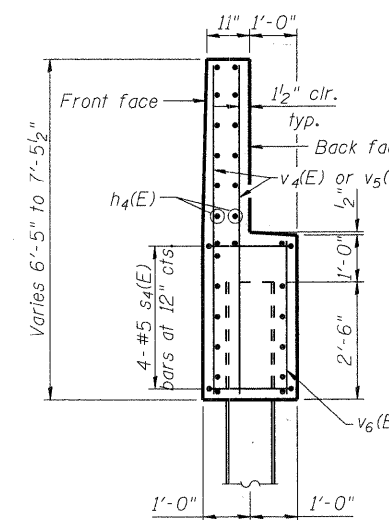
NOTES:

See Sheet S-14 for Section A-A.
 For details of piles see Sheet S-16.
 Cut h₄(E) bars in field to maintain clear cover from edge of concrete.
 Steel HP Piling shall be driven to the Nominal Required Bearing Capacity indicated but not less than a minimum embedment length of 22'-6".
 Stations and offsets based on Construction Baseline Thompson Road.

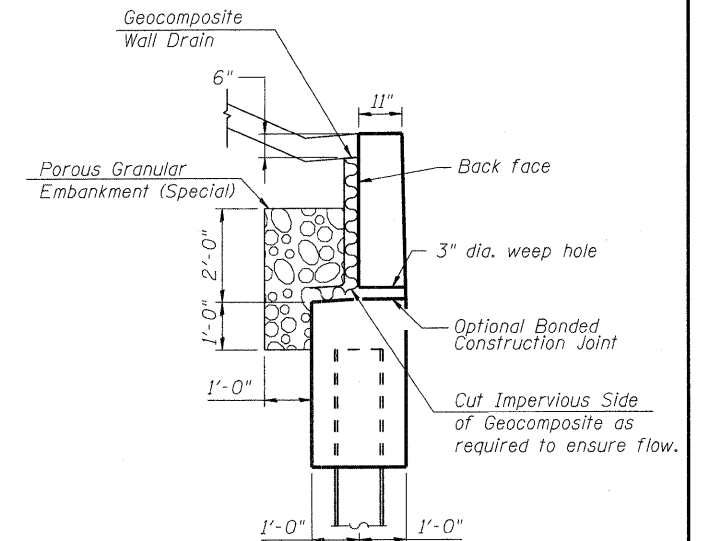
* Cut v₄(E) and v₅(E) bars according to field cut diagram and use remainder in the other face



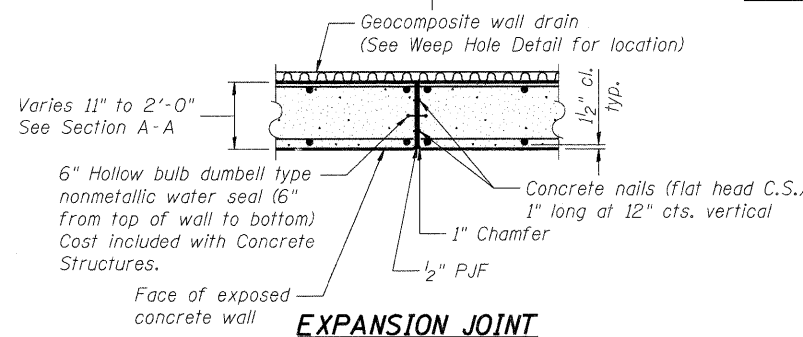
PLAN



SECTION A-A



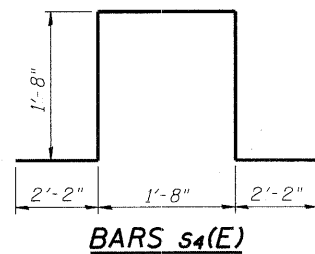
WEEP HOLE DRAIN DETAIL



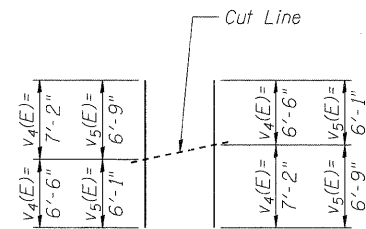
EXPANSION JOINT

Cost included with Concrete Structures

DESIGNED	MGH/JPG
CHECKED	KMA
DRAWN	WJH
CHECKED	RGD



BARS s₄(E)



BAR v₄(E), and v₅(E)
Field Cut Diagram

SOUTH RETAINING WALL DETAILS

THOMPSON ROAD
 OVER NIPPERSINK CREEK
 SECTION NO. 06-00005-00-BR
 McHENRY COUNTY
 STATION 206+30.48
 STRUCTURE NO. 056-6006

DATE: 11/18/09

SHEET NO. S-3 S-25 SHEETS	F.A.U. RTE.	SECTION	COUNTY	TOTAL SHEETS	SHEET NO.
	4081	06-00005-00-BR	McHENRY	45	14
CONTRACT NO. 63409					
FED. ROAD DIST. NO. 1 ILLINOIS FED. AID PROJECT					

Illinois Professional Design Firm # 184-000108
SEC GROUP, INC.
 Engineering • Surveying • Planning • Landscape Architecture
 420 N. Front Street, McHenry, IL 60050
 T 815.385.1778 F 815.385.1781
 www.secgroupinc.com
 • McHenry, IL • Yorkville, IL • New Lenox, IL • Chicago, IL

FILE NAME: 090563_06101.dwg 12/18/2009
 PLOT DRIVER: acadplot
 PEN TABLE: standard.ctb