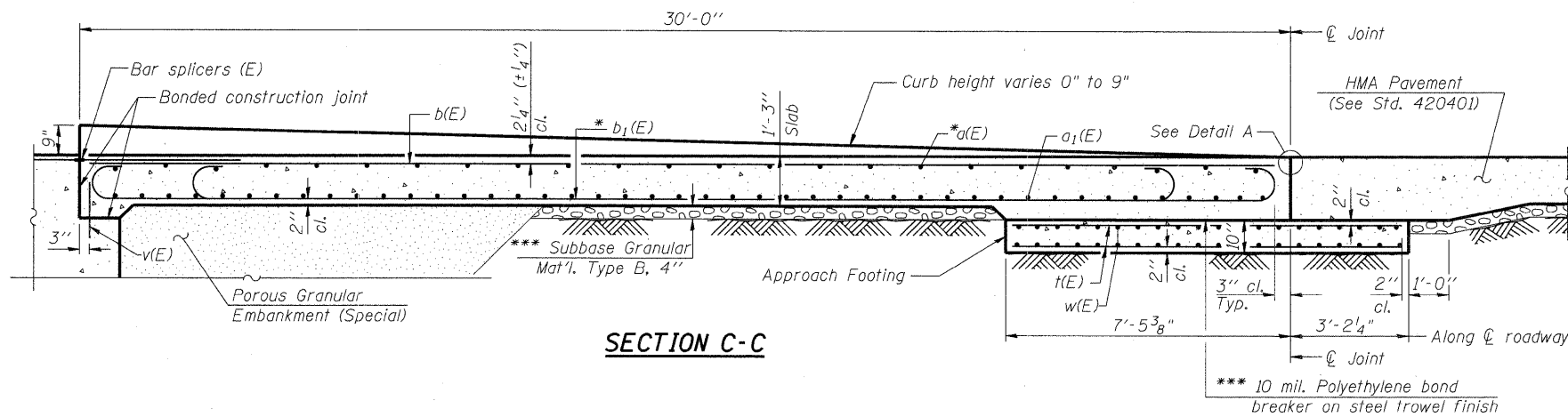


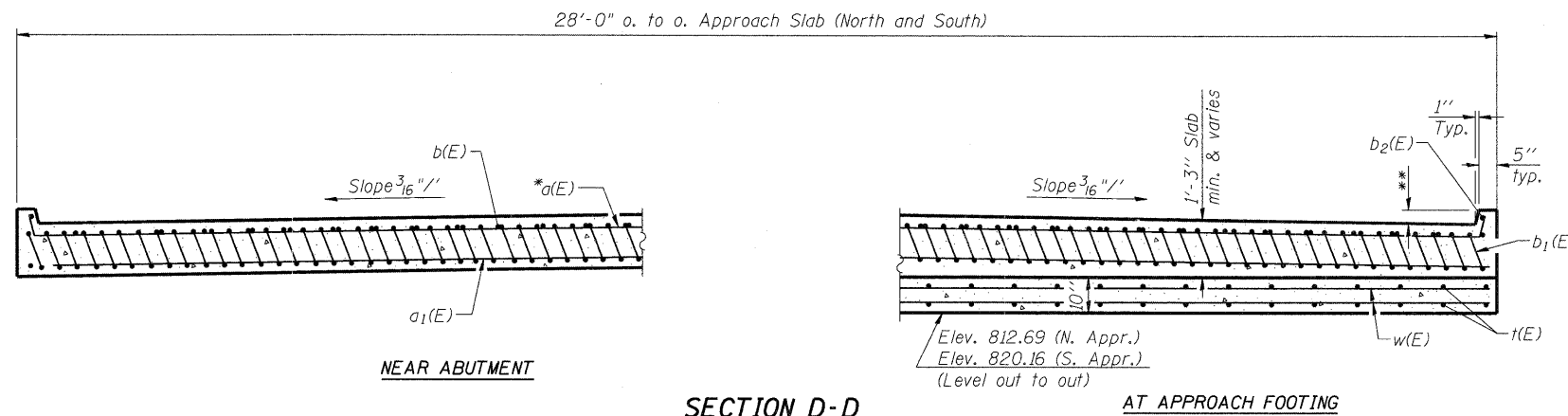
Notes:

See sheet S-6 of S-25 for Detail A and View B-B.
 Approach slab and parapet concrete shall be paid for as Concrete Superstructure.
 Approach footing concrete shall be paid for as Concrete Structures.
 Reinforcement shall be paid for as Reinforcement Bars, Epoxy Coated.
 The approach footing maximum applied service bearing pressure (Q_{max}) = 2.0 ksf.
 For bar splicer details, see sheet S-22.
 Cost of excavation for approach footing included with Concrete Structures.
 For Porous Granular Embankment (Special) and drainage treatment details, see sheet S-2.

- * Tilt bars as required to maintain clearance
- ** Curb height varies from 0" to 9"
- *** Cost included with Concrete Superstructure

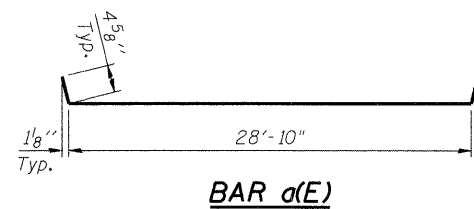
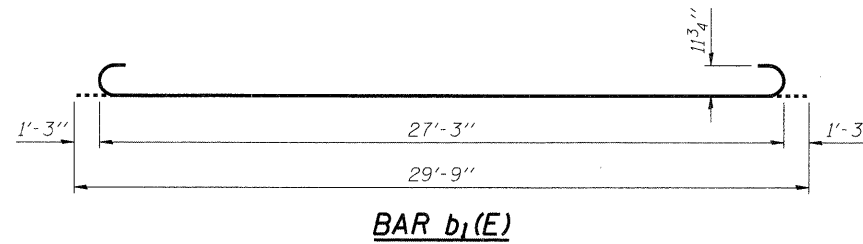


SECTION C-C



SECTION D-D

(See Plan for dimensions not shown)



**TWO APPROACHES
BILL OF MATERIAL**

Bar	No.	Size	Length	Shape
a (E)	50	# 4	28'-10"	—
a ₁ (E)	92	# 5	29'-5"	—
b(E)	56	#7	29'-8"	—
b ₁ (E)	112	# 5	29'-9"	—
b ₂ (E)	4	# 5	29'-8"	—
t(E)	116	#6	10'-3"	—
w(E)	80	#5	27'-8"	—
Concrete Superstructure			Cu. Yd.	78.5
Concrete Structures			Cu. Yd.	18.7
Reinforcement Bars, Epoxy Coated			Pound	14,880

BRIDGE APPROACH SLAB REBAR DETAILS

THOMPSON ROAD
 OVER NIPPERSINK CREEK
 SECTION NO. 06-00005-00-BR
 McHENRY COUNTY
 STATION 206+30.48
 STRUCTURE NO. 056-6006

DATE: 11/18/09

DESIGNED	MGH/JPG
CHECKED	KMA
DRAWN	WJH
CHECKED	RGD

SEC GROUP, INC.
 Illinois Professional Design Firm # 184-000108
 • Engineering • Surveying • Planning • Landscape Architecture
 420 N. Front Street, McHenry, IL 60050
 t. 815.385.1778 f. 815.385.1781
 www.secgroupinc.com
 • McHenry, IL • Yorkville, IL • New Lenox, IL • Chicago, IL

SHEET NO. S-7 S-25 SHEETS	F.A.U RTE.	SECTION	COUNTY	TOTAL SHEETS	SHEET NO.
	4081	06-00005-00-BR	McHENRY	45	18
CONTRACT NO. 63409			FED. ROAD DIST. NO. 1 ILLINOIS FED. AID PROJECT		

FILE NAME: 060561_4081_02_01_2009
 PLOT DRIVER: pdf.plt
 PEN TABLE: standard-trans.tbl