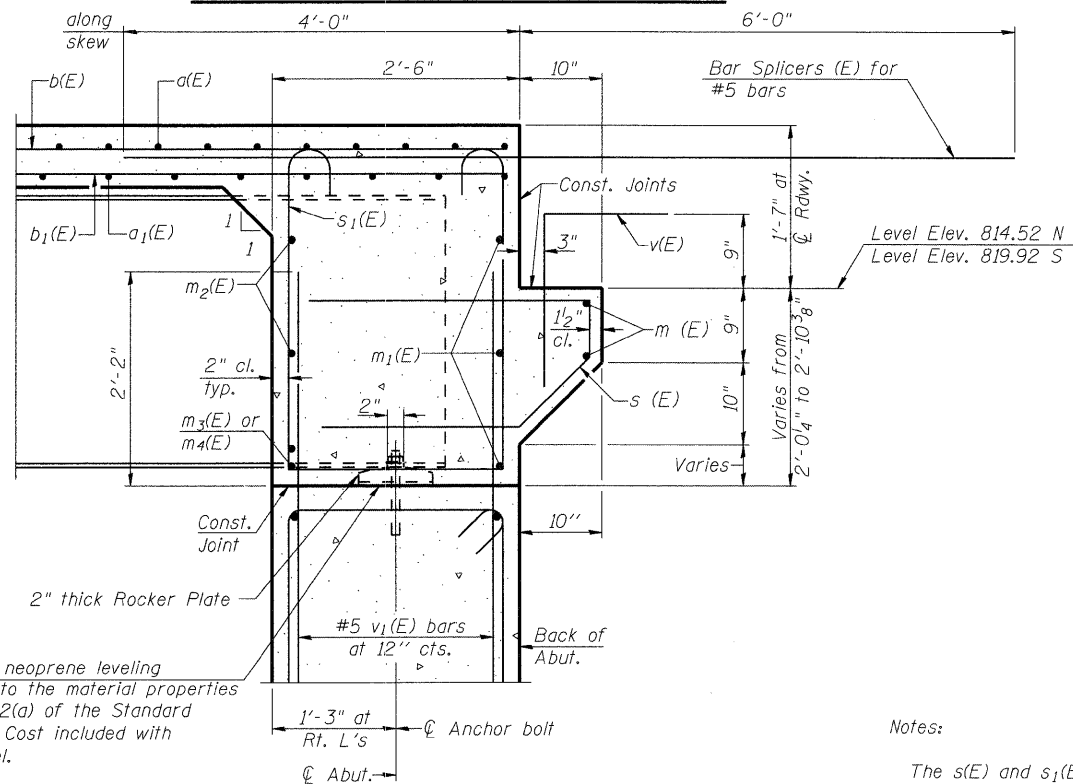


**DIAPHRAGM ELEVATION AT ABUTMENT**

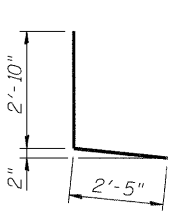


**SECTION A-A**

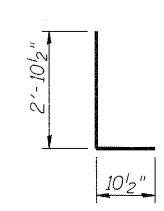
Dimensions at right angles to abutment, except as shown.

Notes:

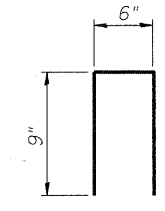
The s(E) and s1(E) bars shall be placed parallel to the beams. Spacing for these bars shall be at right angles to the beams.



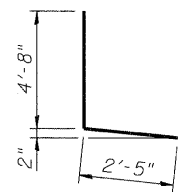
**BAR d(E)**



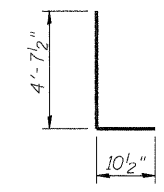
**BAR d1(E)**



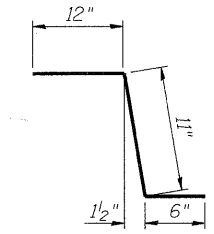
**BAR d2(E)**



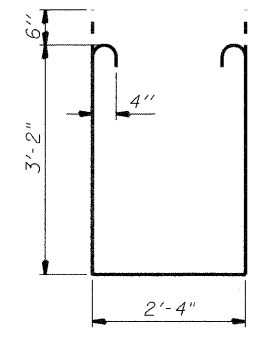
**BAR d3(E)**



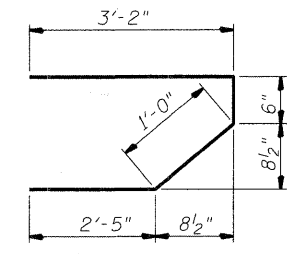
**BAR d4(E)**



**BAR c(E)**

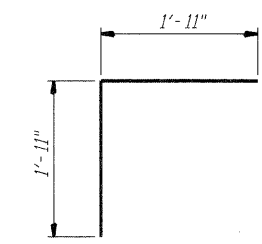


**BAR s1(E)**



**BAR s(E)**

(s (E) bars placed parallel to beams)



**BAR v(E)**

**SUPERSTRUCTURE  
BILL OF MATERIAL**

Bar	No.	Size	Length	Shape
a (E)	298	# 5	42'-4"	—
a1(E)	179	# 5	39'-2"	—
a2(E)	298	# 6	6'-0"	—
a3(E)	4	# 5	45'-5"	—
b (E)	308	# 5	23'-1"	—
b1(E)	88	# 6	15'-2"	—
b2(E)	246	# 5	26'-7"	—
b3(E)	84	# 5	26'-7"	—
c(E)	292	#5	2'-5"	┌
c1(E)	292	#6	7'-6"	—
d (E)	282	#4	5'-3"	└
d1(E)	282	#6	3'-9"	└
d2(E)	60	# 4	2'-0"	└
d3(E)	20	# 4	7'-1"	└
d4(E)	20	#6	5'-6"	└
e(E)	48	# 4	18'-2"	—
e1(E)	24	# 4	3'-6"	—
e2(E)	48	# 4	7'-0"	—
e3(E)	36	#4	14'-9"	—
m(E)	8	# 6	23'-10"	—
m1(E)	12	# 6	24'-0"	—
m2(E)	24	# 6	9'-10"	—
m3(E)	10	# 6	7'-3"	—
m4(E)	4	# 6	3'-4"	—
s (E)	82	# 5	7'-1"	└
s1(E)	82	# 4	9'-8"	└
v (E)	58	# 5	3'-10"	└
Reinforcement Bars, Epoxy Coated		Pound	52,690	
Concrete Superstructure		Cu. Yds.	249	

Bars indicated thus 1x2-#5 etc. indicates 1 line of bars with 2 lengths per line.

**DIAPHRAGM DETAILS**

**THOMPSON ROAD  
OVER NIPPERSINK CREEK  
SECTION NO. 06-00005-00-BR  
McHENRY COUNTY  
STATION 206+30.48  
STRUCTURE NO. 056-6006**

DATE: 11/18/09

DESIGNED	MGH/JPG
CHECKED	KMA
DRAWN	WJH
CHECKED	RGD

**MIN. BAR LAP**  
#6 bar = 2'-9"

**SEC GROUP, INC.**  
Illinois Professional Design Firm # 184-000108  
• Engineering • Surveying • Planning • Landscape Architecture  
420 N. Front Street, McHenry, IL 60050  
T. 815.385.1778 F. 815.385.1781  
www.secgroupinc.com  
• McHenry, IL • Yorkville, IL • New Lenox, IL • Chicago, IL

SHEET NO. <b>S-13</b> <b>S-25</b> SHEETS	F.A.U R.T.E.	SECTION	COUNTY	TOTAL SHEETS	SHEET NO.
	4081	06-00005-00-BR	McHENRY	45	24
CONTRACT NO. 63409					
FED. ROAD DIST. NO. 1 ILLINOIS FED. AID PROJECT					

FILE NAME: 060563.Dwg  
PLOT DRIVER: plot.plt  
PEN TABLE: standard-trans.tbl