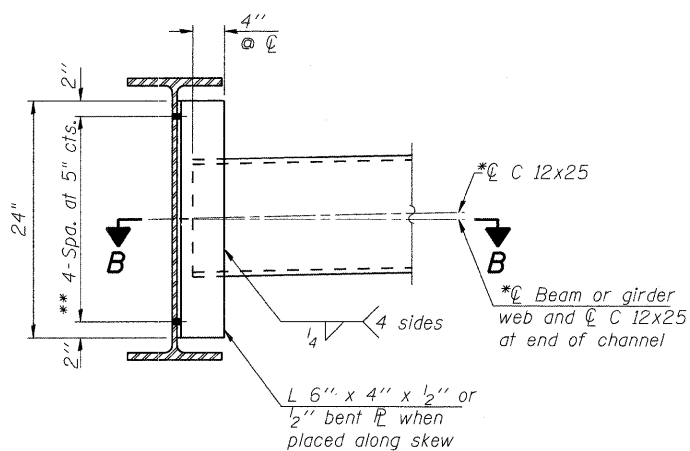
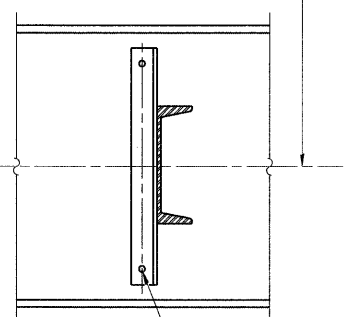


SECTION B-B

Beam or girder web and C* at end of channel

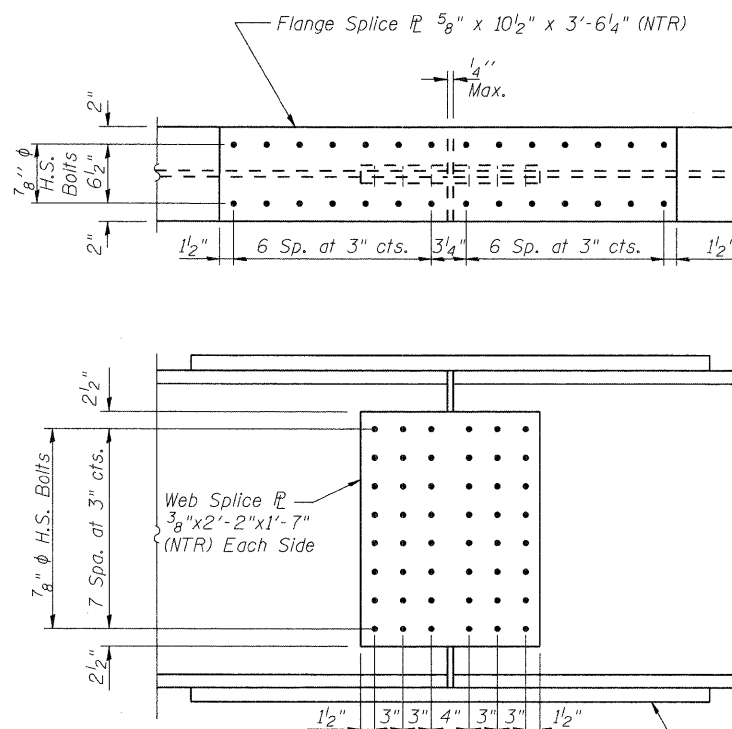


DIAPHRAGM D

Note:
Two hardened washers required for each set of oversized holes.
*Alternate channels are permitted to facilitate material acquisition. Calculated weight of structural steel is based on the lighter section. The alternate, if utilized, shall be provided at no additional cost to the Owner.
**3/4" H.S. bolts, 1 5/16" holes

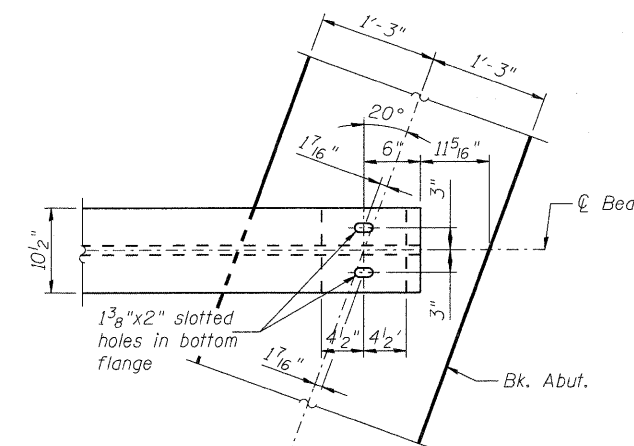
TYPICAL BEAM ELEVATION

"NTR" denotes beams to which Notch Toughness Requirements are applicable

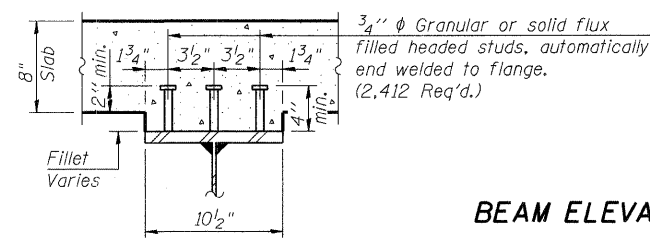


FIELD SPICE DETAIL

(12 Required)



PLAN AT ABUTMENTS



SECTION A-A

BEAM ELEVATION AND DETAILS

THOMPSON ROAD
OVER NIPPERSINK CREEK
SECTION NO. 06-00005-00-BR
McHENRY COUNTY
STATION 206+30.48
STRUCTURE NO. 056-6006

DATE: 11/18/09

BILL OF MATERIAL

Item	Unit	Quantity
Furnishing & Erecting Structural Steel	L. Sum	1
Stud Shear Connectors	Each	2412

Notes:

Work this Sheet with Sheets S-15 & S-17.
All splice material shall be M270 Grade 50.
Load carrying components designated "NTR" shall conform to the Supplemental Requirements for Notch Toughness, Zone 2.

DESIGNED	MGH/JPG
CHECKED	KMA
DRAWN	WJH
CHECKED	RGD

SEC GROUP, INC.
Engineering • Surveying • Planning • Landscape Architecture
420 N. Front Street, McHenry, IL 60050
t. 815.385.1778 f. 815.385.1781
www.secgroupinc.com
McHenry, IL • Yorkville, IL • New Lenox, IL • Chicago, IL

SHEET NO. S-16	F.A.U RTE.	SECTION	COUNTY	TOTAL SHEETS	SHEET NO.
	4081	06-00005-00-BR	McHENRY	45	27
S-25 SHEETS		CONTRACT NO. 63409			
FED. ROAD DIST. NO. 1 ILLINOIS FED. AID PROJECT					

FILE NAME: 060563.Srct01.dwg 11/18/09
PLOT DRIVER: pdfplot
PEN TABLE: standard-trans.tbl