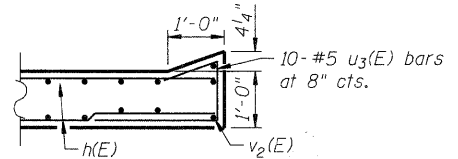
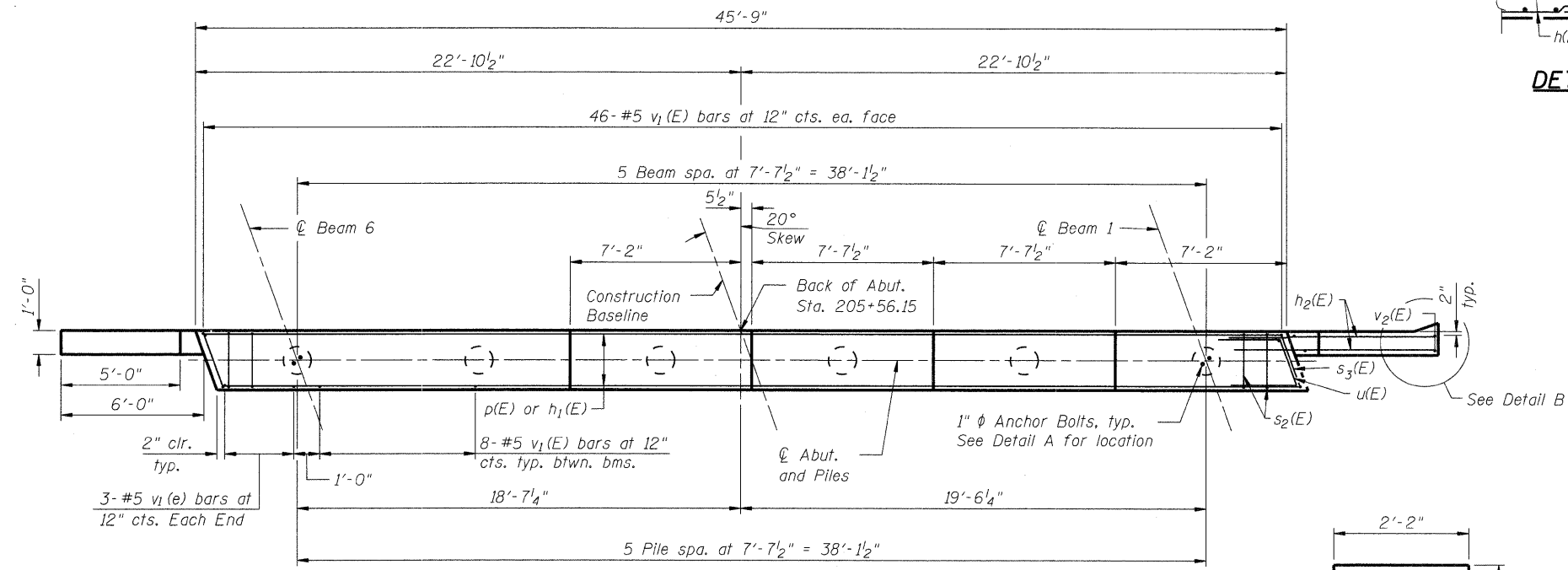


**ELEVATION**  
(Looking South)

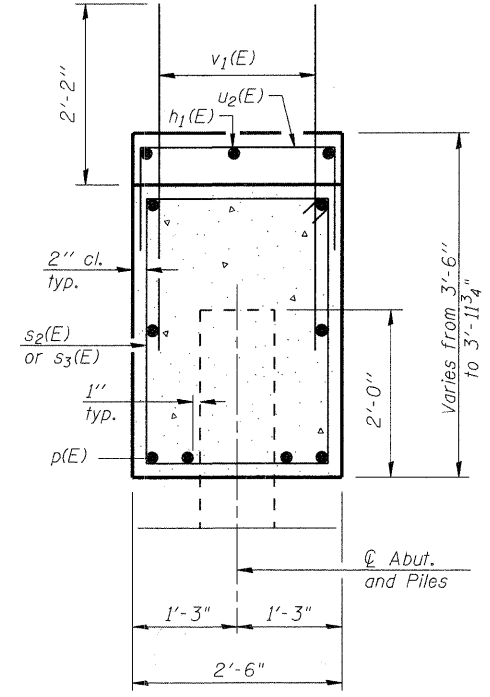
Notes:  
Four steps monolithically with cap.



**DETAIL B**



**PLAN**

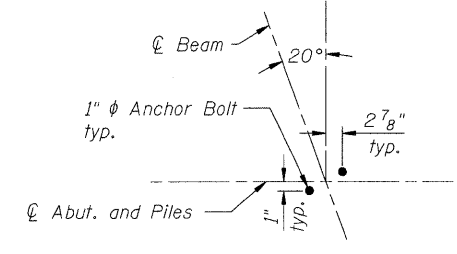


**SEC. THRU ABUT.**

**BILL OF MATERIAL**

Bar	No.	Size	Length	Shape
h(E)	24	# 5	8'-0"	—
h1(E)	3	# 5	30'-2"	—
h2(E)	20	# 5	8'-0"	—
p(E)	18	#7	25'-2"	—
s2(E)	41	# 5	11'-7"	□
s3(E)	2	# 5	11'-9"	□
U(E)	8	#6	8'-3"	┌
u2(E)	31	#4	4'-2"	┌
u3(E)	10	#5	4'-4"	┌
v1(E)	92	#5	4'-4"	—
v2(E)	14	#5	13'-10"	—
Structure Excavation		Cu. Yd.	120	
Concrete Structures		Cu. Yd.	19.0	
Reinforcement Bars, Epoxy Coated		Pound	2,760	
Furnishing Metal Shell Piles, 14" x 0.250"		Foot	365	
Driving Piles		Foot	365	
Test Pile, Metal Shell Piles, 14" x 0.250"		Each	1	

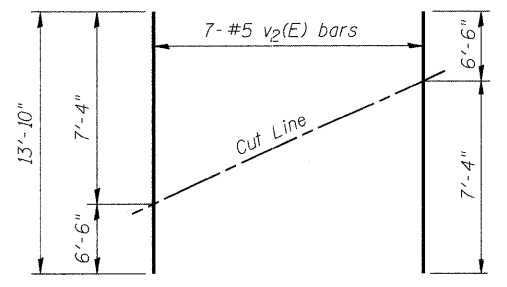
For details of Bar Splicers, see sheet S-22.  
For details of piles and Concrete Encasement, see sheet S-23.  
See sheet S-3 and S-4 for retaining wall details.



**DETAIL A**

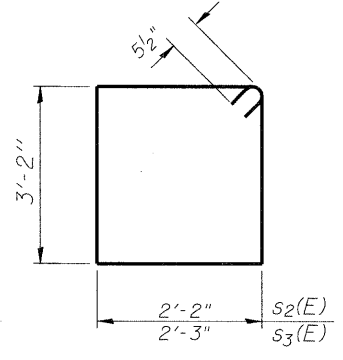
**PILE DATA**

Type and Size: Metal Shell - 14 in. dia. x 0.25 in. walls  
Nominal Required Bearing: 390K  
Factored Resistance Available: 130K  
Est. Length: 73'  
No. Production Piles: 5  
No. Test Piles: 1

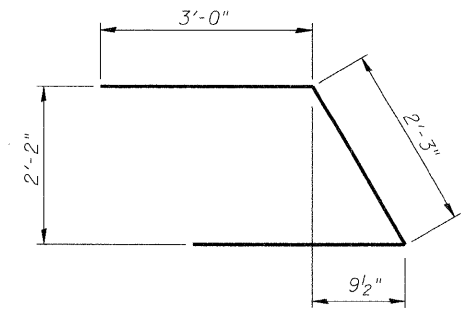


**FIELD CUTTING DIAGRAM**

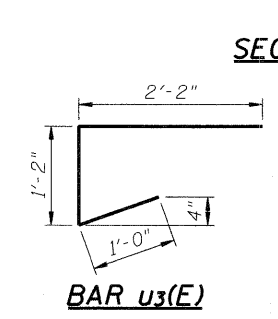
Order v2(E) full length. Cut as shown and use remainder of bars in opposite face.



**BARS s2(E) & s3(E)**



**BAR u(E)**



**BAR u3(E)**

DESIGNED	MGH/JPG
CHECKED	KMA
DRAWN	WJH
CHECKED	RGD

Illinois Professional Design Firm # 184-000108  
**SEC GROUP, INC.**  
Engineering • Surveying • Planning • Landscape Architecture  
420 N. Front Street, McHenry, IL 60050  
L 815.385.1778 • F 815.385.1781  
www.secgroupinc.com  
McHenry, IL • Yorkville, IL • New Lenox, IL • Chicago, IL

SHEET NO. <b>S-18</b>	F.A.U. RTE.	SECTION	COUNTY	TOTAL SHEETS	SHEET NO.
	4081	06-00005-00-BR	McHENRY	45	29
<b>S-25</b> SHEETS		CONTRACT NO. 63409			
FED. ROAD DIST. NO. 1		ILLINOIS		FED. AID PROJECT	

**SOUTH ABUTMENT DETAILS**

THOMPSON ROAD  
OVER NIPPERSINK CREEK  
SECTION NO. 06-00005-00-BR  
McHENRY COUNTY  
STATION 206+30.48  
STRUCTURE NO. 056-6006

DATE: 11/18/09

FILE NAME: 060063\_South.abut.dwg/2/10/2009  
PLOT DRIVER: pdfplot  
PEN TABLE: standard-trans.tbl