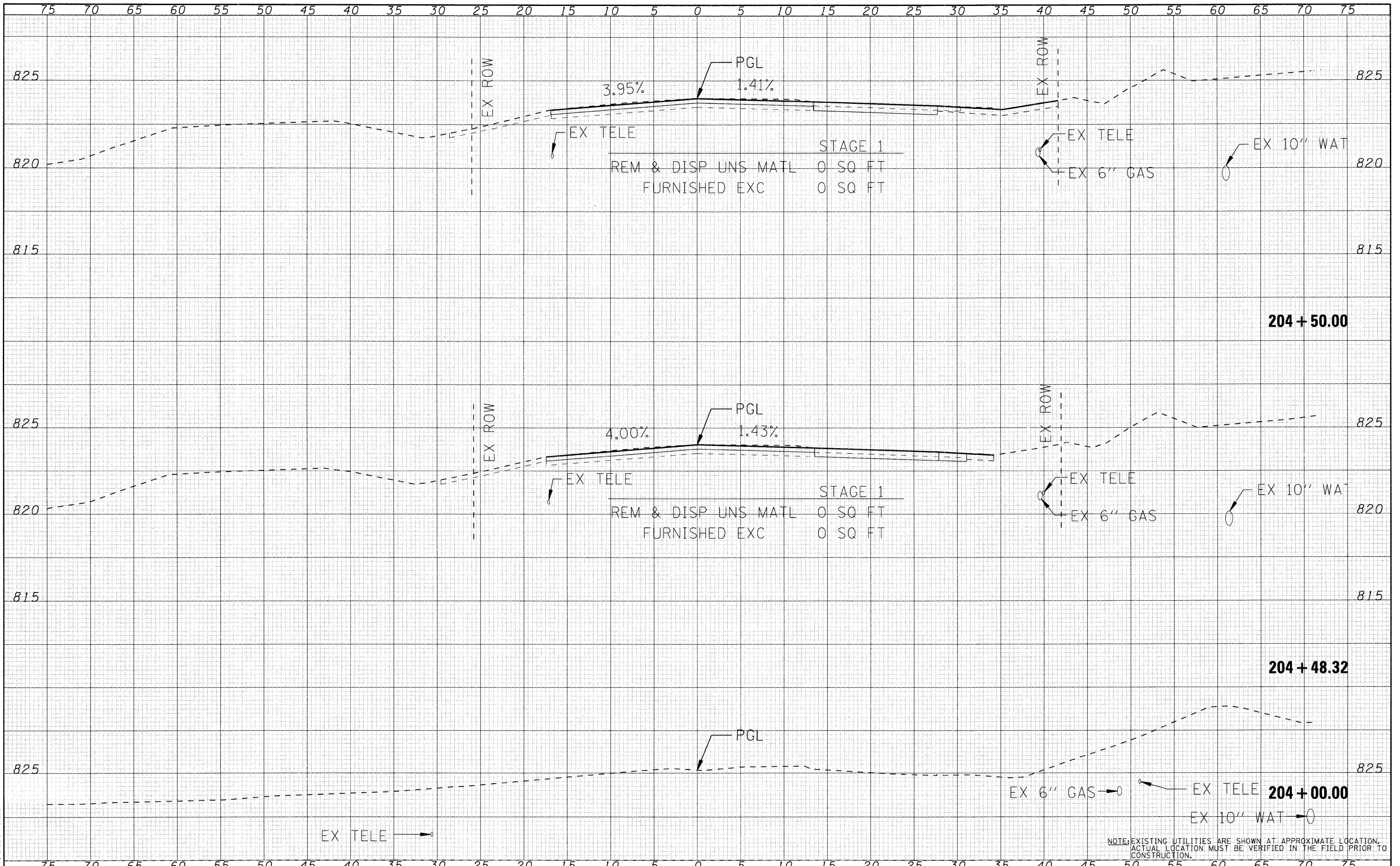


DATE	
BY	
FINAL SURVEY	
SURVEYED	
PLOTTED	
DATE	
AREAS CHECKED	
NO.	

DATE	
BY	
ORIGINAL SURVEY	
SURVEYED	
PLOTTED	
DATE	
AREAS CHECKED	
NO.	

SEC GROUP, INC.  
 PROJECT CONTACT: Robert C. Daplas  
 DATE PLOTTED: 12/15/2009 09:33:02 AM  
 FILE NAME: 080563.xsec-thom.dgn  
 PLOT DRIVER: pdt1b1t  
 PEN TABLE: standard-trans.tbl



<p><b>SEC Group, Inc.</b>          Engineering          Surveying          Planning          Landscape Architecture          McHenry • Yorkville • New Lenox • Chicago          www.secgroupinc.com</p>	USER NAME = whood	DESIGNED -	REVISED -	<p align="center"><b>VILLAGE OF WONDER LAKE</b></p> <p align="center"><b>CROSS SECTIONS</b> <b>THOMPSON ROAD</b></p>	F.A. RTE. 4081	SECTION 06-00005-00-BR	COUNTY McHENRY	TOTAL SHEETS 45	SHEET NO. 40	
	PLOT SCALE = 1"=5'	CHECKED - SP	REVISED -		SCALE: 1"=5'	CONTRACT NO. 63409		ILLINOIS FED. AID PROJECT		
	PLOT DATE = 12/15/2009	DATE - 11/18/09	REVISED -		SHEET NO. 1 OF 6 SHEETS	STA. 204+00.00 TO STA. 204+50.00				

NOTE: EXISTING UTILITIES ARE SHOWN AT APPROXIMATE LOCATION. ACTUAL LOCATION MUST BE VERIFIED IN THE FIELD PRIOR TO CONSTRUCTION.