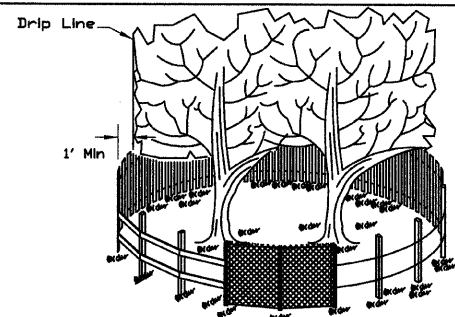
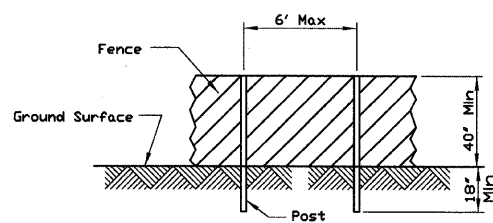


TREE PROTECTION - FENCING



SIDE VIEW



POST AND FENCE DETAIL

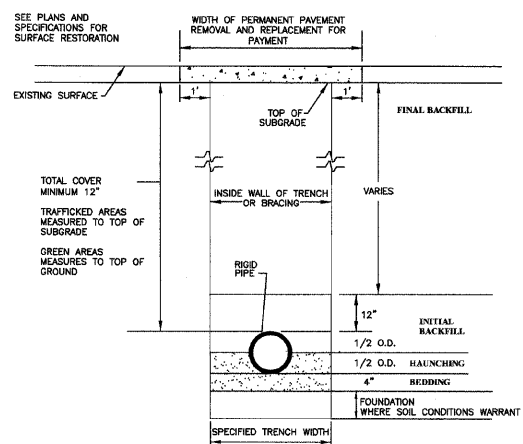
NOTES:

1. The fence shall be located a minimum of 1 foot outside the drip line of the tree to be saved and in no case closer than 5 feet to the trunk of any tree.
2. Fence posts shall be either standard steel posts or wood posts with a minimum cross sectional area of 3.0 sq. in.
3. The fence may be either 40' high snow fence, 40' plastic web fencing or any other material as approved by the engineer/inspector.

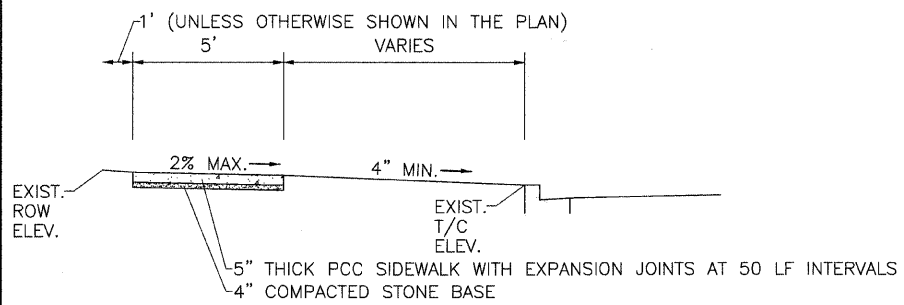
REFERENCE	
Project	
Designed	Date
Checked	Date
Approved	Date



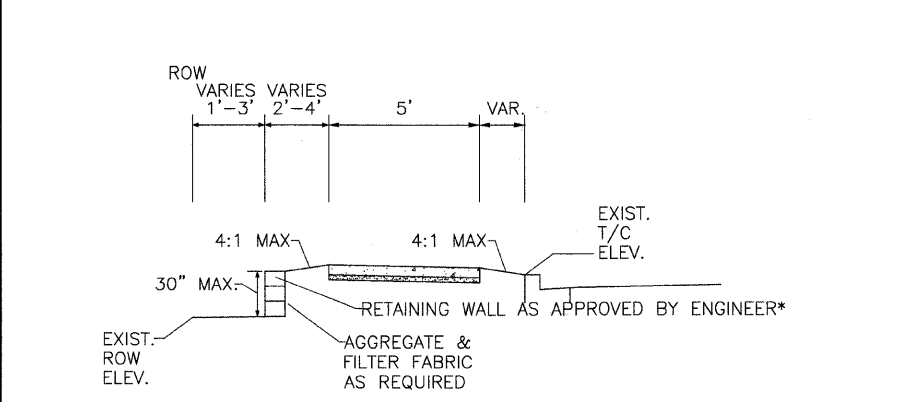
STANDARD DVG. NO.	IL-690
SHEET	1 OF 1
DATE	4-7-94



RIGID PIPE INSTALLATION DETAIL
STANDARD DRAWING NO. 1

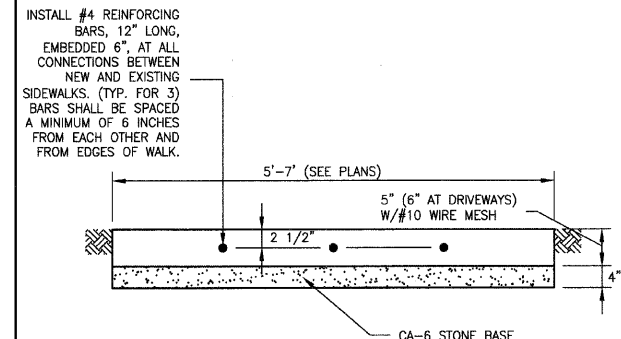


TYPICAL SIDEWALK DETAIL



TYPICAL RETAINING WALL DETAIL

* RETAINING WALL TO BE "UNILOCK" OR EQUAL



STANDARD DETAIL FOR SIDEWALK

- NOTES:**
1. ALL SIDEWALK SHALL BE CONSTRUCTED WITH IDOT CLASS "SI" CONCRETE WITH A MINIMUM COMPRESSIVE STRENGTH OF 3,500 PSI AT 14 DAYS.
 2. PREFORMED EXPANSION JOINTS (3/4" THICK) SHALL BE CONSTRUCTED IN SIDEWALK EVERY 100 FEET AND AT ALL ABUTTING DRIVEWAYS AND CURB AND GUTTER.
 3. TOOLED CONTRACTION JOINTS SHALL BE CONSTRUCTED IN SIDEWALK EVERY FIVE FEET.
 4. SIDEWALK SHALL HAVE 1/4" PER FOOT CROSS-SLOPE.
 5. SIDEWALKS SHALL BE TESTED PER CITY CODE 11-6-6(B).

PLOT DATE: Dec 17, 2009
 FILENAME: H:\09-PH\3002\PLANS-ENG\REV-1\dwg\09-12-17.dwg

FILE NAME =	USER NAME = \$USER\$	DESIGNED -	REVISED -	STATE OF ILLINOIS DEPARTMENT OF TRANSPORTATION	CITY OF PALOS HEIGHTS SIDEWALK IMPROVEMENTS DETAIL SHEET		F.A.P. RTE.	SECTION	COUNTY	TOTAL SHEETS	SHEET NO.
H:\09-PH\3002\PLANS-ENG\REV-1\dwg\09-12-17.dwg	PH-3002 09-12-17.dwg	DRAWN -	REVISED -				348	09-00044-00-SW	COOK	29	27
PLOT SCALE = \$SCALE\$		CHECKED -	REVISED -				CONTRACT NO. 63413				
PLOT DATE = Dec 17, 2009		DATE -	REVISED -				ILLINOIS FED. AID PROJECT				
				SCALE: NA	SHEET NO. OF	SHEETS STA.	TO STA.				