



BEGIN REMOVAL & OVERLAY OF HAWTHORNE AVE STA. 100+00

25.00' (TYP)

40'

EAST END AVE

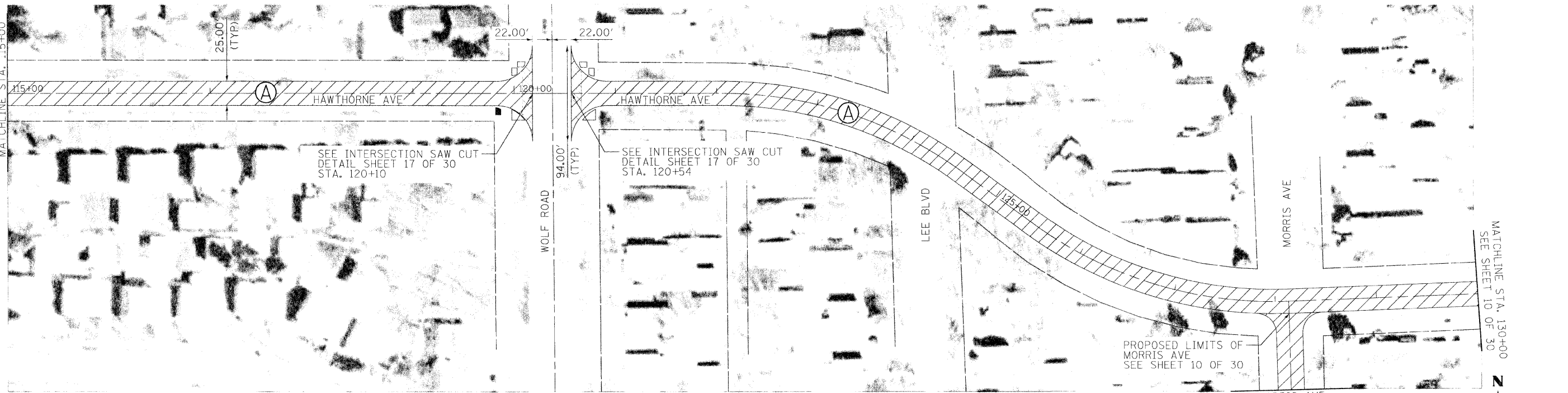
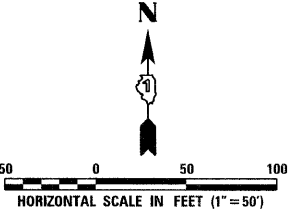
IRVING AVE

HILLSIDE AVE

MATCHLINE STA. 115+00

HAWTHORNE AVENUE

SEE SCHEDULE OF QUANTITIES FOR LOCATIONS OF SIDEWALK, DETECTABLE WARNINGS, HOT-MIX ASPHALT SURFACE REMOVAL (BUTT-JOINT), CURB AND GUTTER, & FRAMES AND LIDS TO BE ADJUSTED (SPECIAL).



25.00' (TYP)

22.00'

22.00'

WOLF ROAD

LEE BLVD

MORRIS AVE

MATCHLINE STA. 130+00
SEE SHEET 10 OF 30

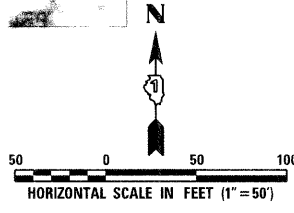
SEE INTERSECTION SAW CUT
DETAIL SHEET 17 OF 30
STA. 120+10

SEE INTERSECTION SAW CUT
DETAIL SHEET 17 OF 30
STA. 120+54

PROPOSED LIMITS OF
MORRIS AVE
SEE SHEET 10 OF 30

MORRIS AVE
SEE SHEET 10 OF 30

HAWTHORNE AVENUE



DESIGNED - DWP	REVISED _____	STATE OF ILLINOIS DEPARTMENT OF TRANSPORTATION	HAWTHORNE AVENUE STA. 100 + 00 TO STA. 130 + 00 PLAN SHEET	F.A. SECTION COUNTY TOTAL SHEET
DRAWN - DWP	REVISED _____			RTE. 09-00046-00-RS COOK 30 09
CHECKED - SJM	REVISED _____			CONTRACT NO. 63414
DATE - 11/30/09	REVISED _____			ILLINOIS FED. AID PROJECT