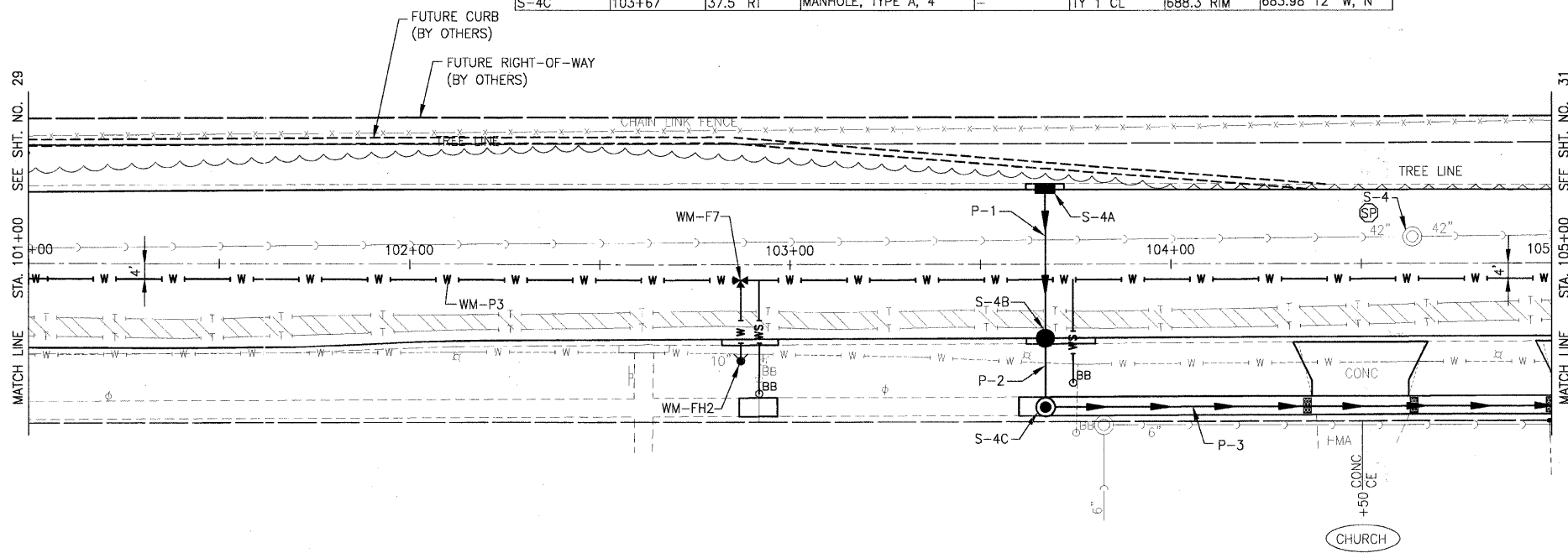


STRUCTURES							
NO.	STATION	OFFSET	TYPE	EX. FRAME	PR. FRAME	RIM / EP	INVERT
S-4	104+63	6.9' LT	-	TY 1 CL	TY 1 CL	-	-
S-4A	103+67	19.5' LT	INLET, TYPE A	-	TY 11	687.5 EP	684.50 12" E
S-4B	103+67	19.5' RT	CATCH BASIN, TYPE A, 4'	-	TY 11	687.5 EP	684.11 12" E, W
S-4C	103+67	37.5' RT	MANHOLE, TYPE A, 4'	-	TY 1 CL	688.3 RIM	683.98 12" W, N

PIPES					
NO.	TYPE	LENGTH (LF)	DIA (IN)	SLOPE	TBF (CY)
P-1	STORM SEWER (WATER MAIN REQUIREMENTS)	39	12	1.00%	11
P-2	STORM SEWER, CLASS A, TYPE 1	18	12	0.72%	6
P-3	STORM SEWER, CLASS A, TYPE 2	251	12	1.00%	159



WATER MAIN FITTINGS (RJT)

WM-F7
STA. 102+87, 4' RT
10" X 6" TEE

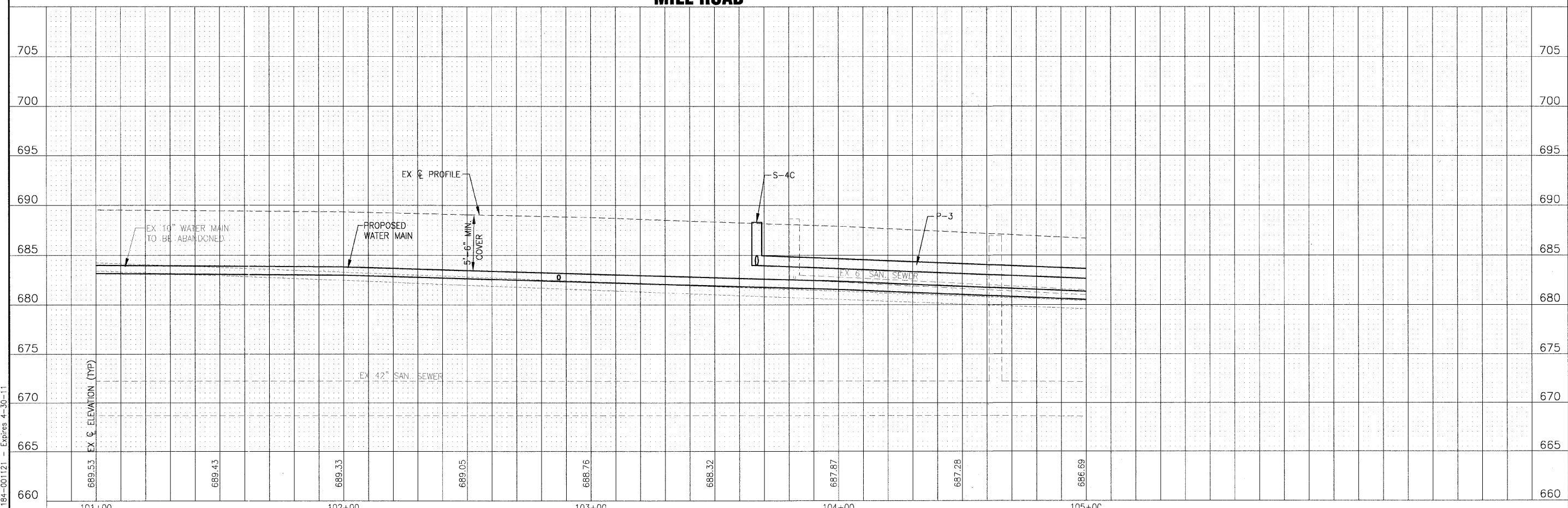
FIRE HYDRANTS

WM-FH2
STA. 102+87, 25.4' RT
FIRE HYDRANT WITH 16 L.F. OF
6" LEADER PIPE (RJT)

WATER MAIN PIPES

WM-P3
400 L.F. OF 10" WATER MAIN

MILL ROAD



I:\AD\070142-ARMY TRAIL-MILL LAPP & WATER MAIN\CADD-SURVEY\DRAWINGS\DWGS\070142-MILL-WM-PREF.DWG PP30
 Plotted: 11/23/2009 3:35 PM By: 231UKB
 Copyright © 2009, By: Boxter & Woodman, Inc.
 State of Illinois - Professional Design Firm
 License No. - 184-001121 - Expires 4-30-11

	DESIGNED - JJS	REVISED - VILLAGE REVIEW 9-08-09	VILLAGE OF ADDISON, ILLINOIS MILL ROAD AND ARMY TRAIL BOULEVARD STP IMPROVEMENTS	DRAINAGE AND UTILITY MILL ROAD		*3884 ARMY TRAIL BLVD.	F.A.U. R/L	SECTION	COUNTY	TOTAL SHEETS	SHEET NO.
	DRAWN - UKB	REVISED - VILLAGE REVIEW 11-05-09				*2625 MILL ROAD	*	09-00098-00-RS	DuPage	69	30
	CHECKED - SMV	REVISED - IDOT REVIEW 11-17-09					C-91-056-10	CONTRACT NO. 63427			
	DATE - 8-19-09	REVISED -					FED. ROAD DIST. NO. 1		ILLINOIS	FED. AID PROJECT M-9003 (474)	