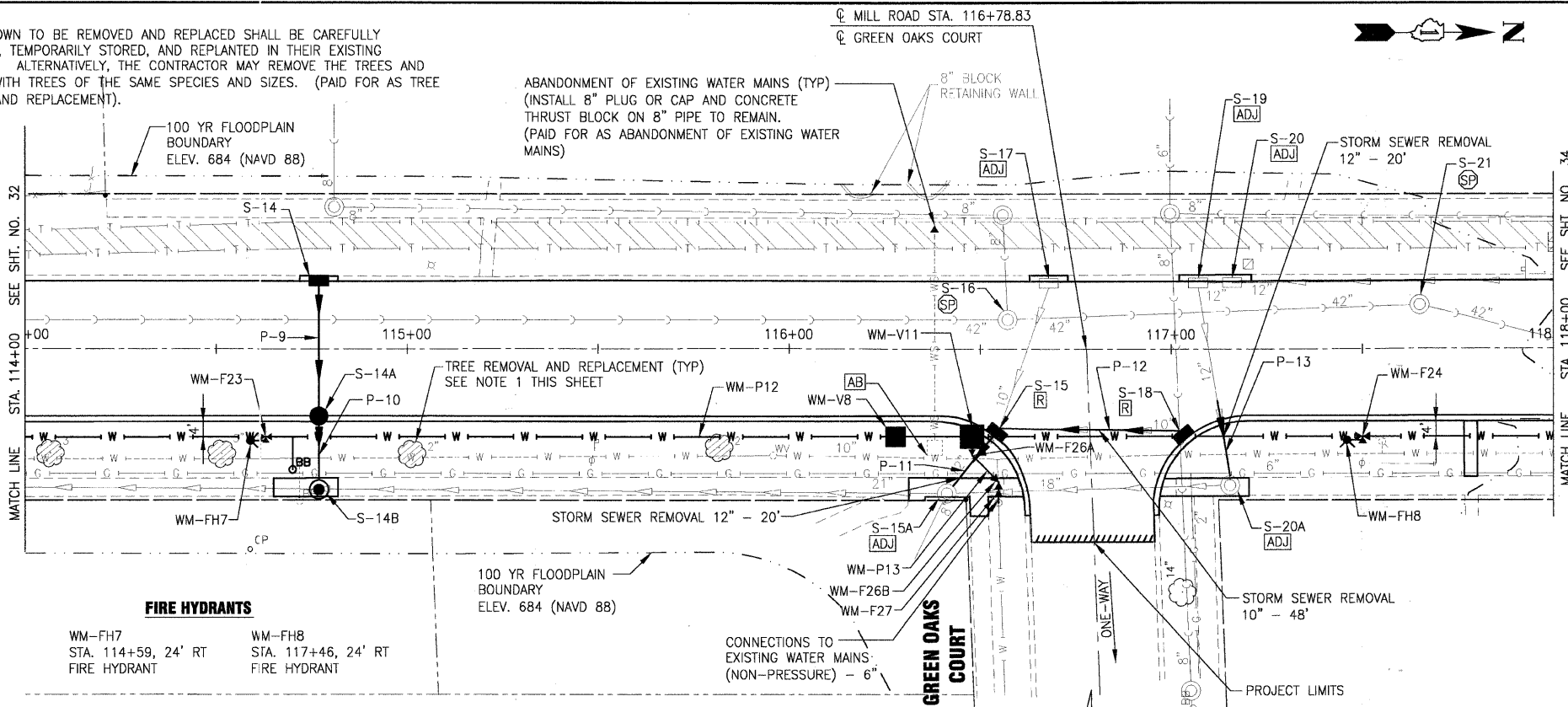


**NOTES:**

1. TREES SHOWN TO BE REMOVED AND REPLACED SHALL BE CAREFULLY EXCAVATED, TEMPORARILY STORED, AND REPLANTED IN THEIR EXISTING LOCATIONS. ALTERNATIVELY, THE CONTRACTOR MAY REMOVE THE TREES AND REPLACE WITH TREES OF THE SAME SPECIES AND SIZES. (PAID FOR AS TREE REMOVAL AND REPLACEMENT).

ABANDONMENT OF EXISTING WATER MAINS (TYP)  
(INSTALL 8" PLUG OR CAP AND CONCRETE THRUST BLOCK ON 8" PIPE TO REMAIN.  
(PAID FOR AS ABANDONMENT OF EXISTING WATER MAINS)



**FIRE HYDRANTS**  
WM-FH7 STA. 114+59, 24' RT FIRE HYDRANT  
WM-FH8 STA. 117+46, 24' RT FIRE HYDRANT

**WATER MAIN FITTINGS (RJT)**

- WM-F23 STA. 114+63, 23' RT 10" X 6" HYDRANT TEE
- WM-F24 STA. 117+50, 23' RT 10" X 6" HYDRANT TEE
- WM-F25 NOT USED
- WM-F26A STA. 116+48, 28' RT 6" - 45' BEND
- WM-F26B STA. 116+55, 35' RT 6" - 45' BEND
- WM-F27 STA. 116+55, 37' RT 6" SLEEVE

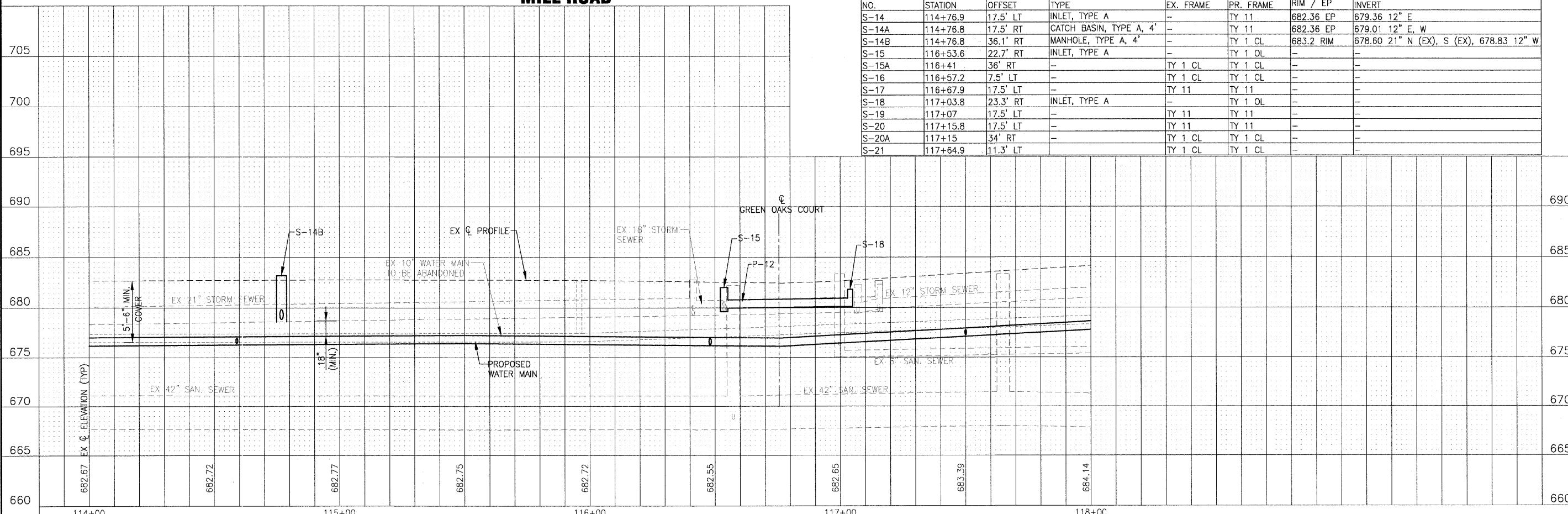
**WATER MAIN VALVES**

- WM-V8 STA. 116+28, 23' RT 10" GATE VALVE WITH 5' DIA VALVE VAULT
- WM-V9 NOT USED
- WM-V10 NOT USED
- WM-V11 STA. 116+48, 23' RT 10" x 6" TEE AND 6" GATE VALVE INSIDE 6' DIA VALVE VAULT
- WM-V12 NOT USED

NOTE: IN ACCORDANCE WITH 35 ILL. ADM. CODE 653.119 (b)(1)(C) - STORM SEWER PIPES P-11 AND P-12 SHALL BE PRESSURE TESTED TO 5 PSI (12 FEET) PRIOR TO BACKFILLING. MAXIMUM SURCHARGE LEVEL IS 3 FEET.

PIPES					
NO.	TYPE	LENGTH (LF)	DIA (IN)	SLOPE	TBF (CY)
P-9	STORM SEWER, CLASS A, TYPE 1	35	12	1.00%	12
P-10	STORM SEWER (WATER MAIN REQUIREMENTS)	18	12	1.00%	1
P-11	STORM SEWER (WATER MAIN REQUIREMENTS)	20	12	MATCH EX	4
P-12	STORM SEWER (WATER MAIN REQUIREMENTS)	48	12	MATCH EX	7
P-13	STORM SEWER (WATER MAIN REQUIREMENTS)	20	12	MATCH EX	5

STRUCTURES						
NO.	STATION	OFFSET	TYPE	EX. FRAME	PR. FRAME	RIM / EP INVERT
S-14	114+76.9	17.5' LT	INLET, TYPE A	-	TY 11	682.36 EP 679.36 12" E
S-14A	114+76.8	17.5' RT	CATCH BASIN, TYPE A, 4'	-	TY 11	682.36 EP 679.01 12" E, W
S-14B	114+76.8	36.1' RT	MANHOLE, TYPE A, 4'	-	TY 1 CL	683.2 RIM 678.60 21" N (EX), S (EX), 678.83 12" W
S-15	116+53.6	22.7' RT	INLET, TYPE A	-	TY 1 OL	-
S-15A	116+41	36' RT	-	TY 1 CL	TY 1 CL	-
S-16	116+57.2	7.5' LT	-	TY 1 CL	TY 1 CL	-
S-17	116+67.9	17.5' LT	-	TY 11	TY 11	-
S-18	117+03.8	23.3' RT	INLET, TYPE A	-	TY 1 OL	-
S-19	117+07	17.5' LT	-	TY 11	TY 11	-
S-20	117+15.8	17.5' LT	-	TY 11	TY 11	-
S-20A	117+15	34' RT	-	TY 1 CL	TY 1 CL	-
S-21	117+64.9	11.3' LT	-	TY 1 CL	TY 1 CL	-



	DESIGNED - JJS	REVISED - VILLAGE REVIEW 9-08-09	<b>VILLAGE OF ADDISON, ILLINOIS</b> <b>MILL ROAD AND ARMY TRAIL BOULEVARD</b> <b>STP IMPROVEMENTS</b>	<b>DRAINAGE AND UTILITY</b> <b>MILL ROAD</b>	*3884 ARMY TRAIL BLVD. *2625 MILL ROAD	F.A.U. RTE.	SECTION	COUNTY	TOTAL SHEETS	SHEET NO.
	DRAWN - UKB	REVISED - VILLAGE REVIEW 11-05-09				*	09-00098-00-RS	DuPage	69	33
CHECKED - SMV	REVISED - IDOT REVIEW 11-17-09	SCALE: HORIZ. 1"=20' / VERT. 1"=5'		PROJECT NO: 070142 STA. 114+00 TO STA. 118+00		C-91-056-10		CONTRACT NO. 63427		
DATE - 8-19-09	REVISED - PER EPA REVIEW 12-07-09					FED. ROAD DIST. NO. 1		ILLINOIS		FED. AID PROJECT M-9003 (474)

I:\ADDN\070142-ARMY TRAIL-MILL LAPP & WATER MAIN\CADD-SURVE\DRAWINGS\DWGS\070142-MILL-WM-PRE.DWG PP33  
 Printed: 12/18/2009 2:03 PM By: 231UKB  
 Copyright © 2009 by Baxter & Woodman, Inc.  
 State of Illinois - Professional Design Firm  
 License No. - 184-001121 - Expires 4-30-11