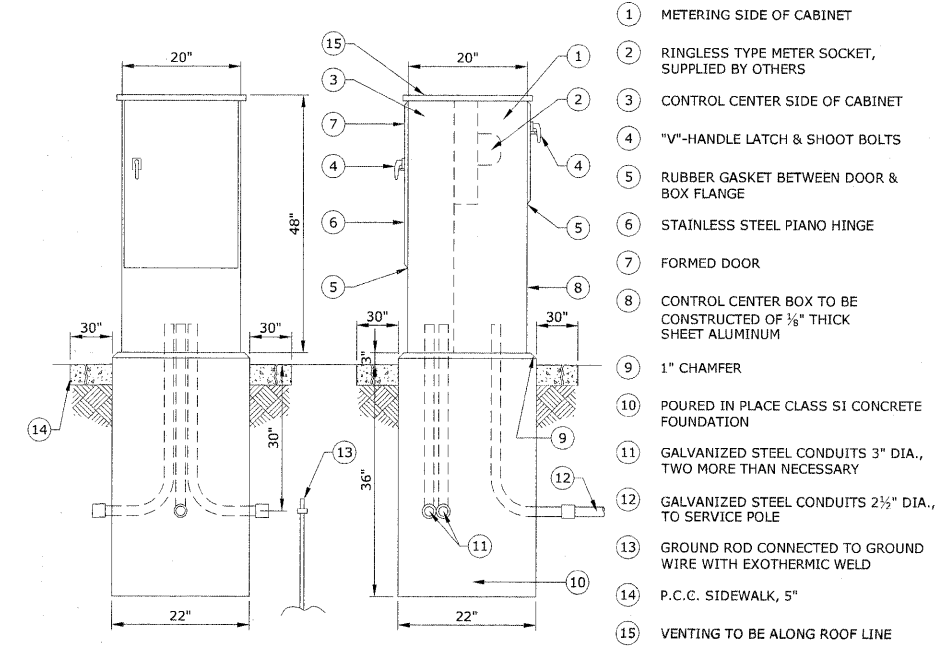


**PROPOSED SERVICE INSTALLATION
POLE TOP MOUNTED TRANSFORMER**

DEVICE SCHEDULE		
QUANTITY	DESCRIPTION	
(A) 1	100 AMP CIRCUIT BREAKER, MOLDED CASE, THERMAL MAGNETIC, 2-POLE, SINGLE THROW, 600V FRAME, NON-INTERCHANGABLE TRIP, BOLT ON TYPE.	
(B) 1	100 AMP, ELECTRICALLY OPERATED AND MECHANICALLY HELD LIGHTING CONTRACTOR, 2-POLE, 600 VOLT WITH 240 VOLT COIL	
(C) 8	240/480 VOLT 1 PHASE PANEL BOARD WITH 100 AMP COPPER MAINS SINGLE POLE, 40 AMP, 277 VOLT BOLT ON BRANCH CIRCUIT BREAKERS	
(D) 1	PHOTO-ELECTRIC CELL, 240 VOLT, MOUNT ON UNDERSIDE OF CABINET VENT	
(E) 2	THERMAL MAGNETIC, MOLDED CASE CIRCUIT BREAKER, 1 POLE, 15 AMP, 277 VOLT BOLT ON TYPE	
(F) 1	CONTROL SWITCH, TOGGLE TYPE, SPDT, 20 AMP, 240 VOLT SPECIAL GRADE	
(G) 1	240/120 VOLT STEP DOWN CONTROL TRANSFORMER 750 VA RATED	
(H) 1	MICRO SWITCH (MOUNTED WITH ACTUATOR TO SWITCH WHEN DOOR IS OPEN) 240 VOLT, 20 AMP	
(I) 1	60 WATT LIGHT FIXTURE VAPOR TIGHT WITH GLOBE, GUARD, AND MOUNTING BOX	
(J) 1	240 VOLT, 15 AMP RECEPTACLE, SPECIFICATION GRADE IN NEMA 5-15R WEATHER PROOF BOX WITH FLAP-TYPE COVER. OUTLET TO BE GFI-TYPE.	
(K) 1	POWER RELAY WITH 25 AMP CONTACTS RATED FOR CONTRACTOR INRUSH CURRENT 240 VOLT COIL	
(L) 1	SURGE ARRESTOR TO WITHSTAND A SURGE CURRENT UP TO 20,000 AMPERES	
(M) 2	TERMINAL BLOCK, 240 VOLT, 50 AMP MAXIMUM WITH NUMBER OF TERMINALS AS INDICATED	

- NOTES:**
- ALL CIRCUIT BREAKERS SHALL HAVE AN INTERRUPT RATING OF 18,000 RMS SYMMETRICAL AMPS, AC
 - UL LISTED DEVICES/COMPONENTS SHALL BE USED
 - NO SPLICES OF WIRES IN CABINET
 - CONTROL WIRE TO BE #12 MTW
 - POWER WIRE SHALL BE RATED RHH/RHW 600 VOLTS OF SIZE INDICATED
 - LIGHTING CONTROLLER SHALL BE SERVICE ENTRANCE RATED PER UL 508(a)



CONTROL CENTER CABINET & FOUNDATION

240/480 VOLT CONTROLLER PANEL WIRING DIAGRAM

Drawing file: W:\Projects\565082900 - St. Charles Rd\39_51_Christie Lighting-Details.dwg Nov 30, 2009 - 2:47pm

HANCOCK ENGINEERING
 Civil Engineers
 Municipal Consultants
 Established 1911

USER NAME -	DESIGNED - MK/SBC	REVISED -
PLOT SCALE -	DRAWN - MK/LEV	REVISED -
PLOT DATE -	CHECKED - SBC/JG/MV	REVISED -
	DATE - 11-30-09	REVISED -

**STATE OF ILLINOIS
DEPARTMENT OF TRANSPORTATION**

SCALE: NONE	SHEET NO. 2 OF 2 SHEETS	STA. TO STA.
-------------	-------------------------	--------------

ILLUMINATION DETAILS

F.A.U. RTE. 1397	SECTION 09-00129-00-PV	COUNTY COOK	TOTAL SHEETS 103	SHEET NO. 60
CONTRACT NO. 63428				
FED. ROAD DIST. NO. 1 ILLINOIS FED. AID PROJECT M-9003 (267)				