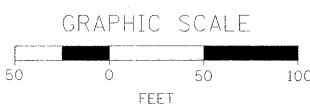
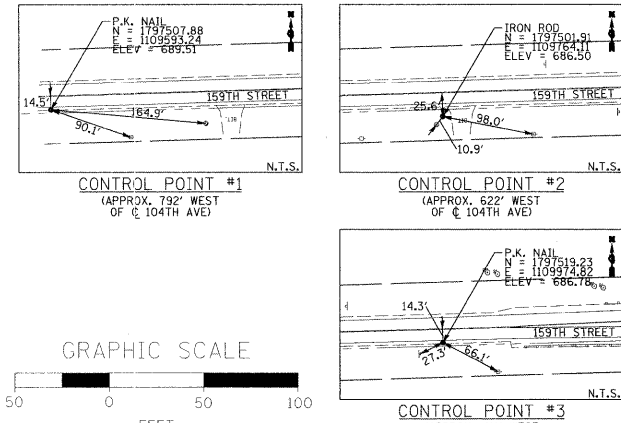
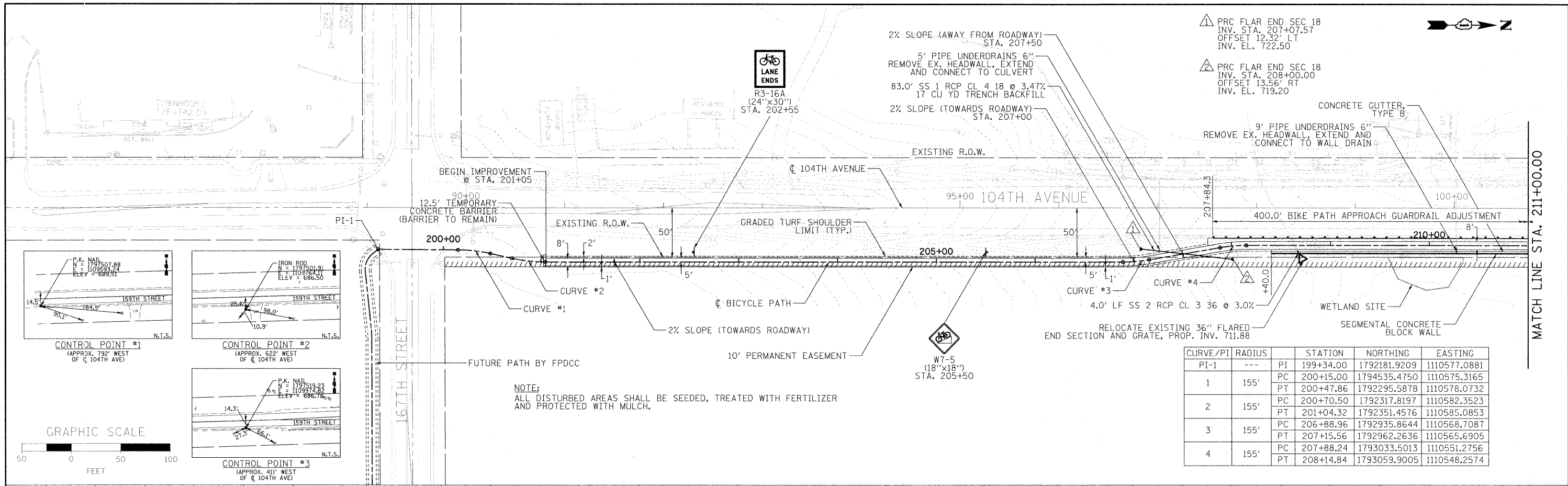


PLAN	SURVEYED	BY	DATE
	PLotted		
	NOTE BOOK		
	NO.		

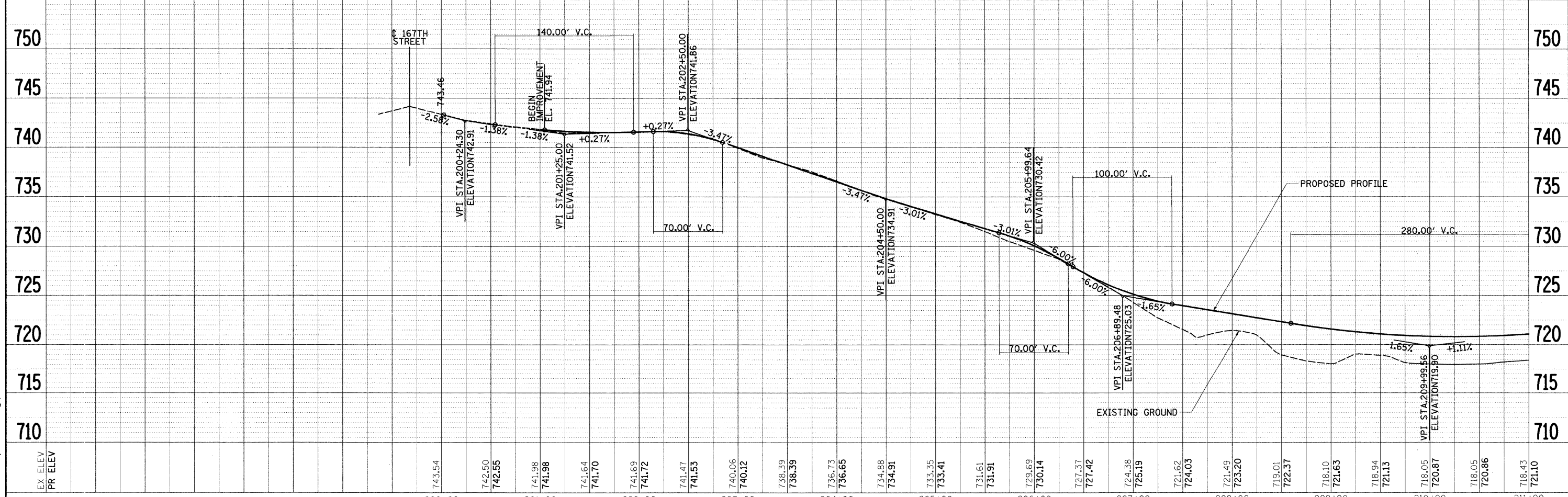
PROFILE	SURVEYED	BY	DATE
	Plotted		
	NOTE BOOK		
	NO.		

McDonough Associates Inc.
Engineers/Architects
130 East Randolph Street, Chicago, Illinois 60601



CURVE/PI	RADIUS	STATION	NORTHING	EASTING
PI-1	---	PI 199+34.00	1792181.9209	1110577.0881
1	155'	PC 200+15.00	1794535.4750	1110575.3165
		PT 200+47.86	1792295.5878	1110578.0732
2	155'	PC 200+70.50	1792317.8197	1110582.3523
		PT 201+04.32	1792351.4576	1110585.0853
3	155'	PC 206+88.96	1792935.8644	1110568.7087
		PT 207+15.56	1792962.2636	1110565.6905
4	155'	PC 207+88.24	1793033.5013	1110551.2756
		PT 208+14.84	1793059.9005	1110548.2574

NOTE:
ALL DISTURBED AREAS SHALL BE SEEDED, TREATED WITH FERTILIZER AND PROTECTED WITH MULCH.



FILE NAME = I:\Dgn\CADD Sheets\pp001.dgn	USER NAME = Mfonasze	DESIGNED - MJT	REVISED -	STATE OF ILLINOIS DEPARTMENT OF TRANSPORTATION	104TH AVENUE BICYCLE PATH PLAN AND PROFILE	F.A.U. R.T.E. = 2696	SECTION = 09-00067-00-BT	COUNTY = COOK	TOTAL SHEETS = 15	SHEET NO. = 4		
PL01 SCALE = 1:500	CHECKED - RY	DATE = 12/01/09	REVISED -			SCALE: 1" = 50'	SHEET NO. 1 OF 2 SHEETS	STA. TO STA.	CONTRACT NO. 63434			
PL01 DATE = 12/1/2009	DATE = 12/01/09	REVISED -	REVISED -			FED. ROAD DIST. NO. 1 ILLINOIS FED. AID PROJECT						