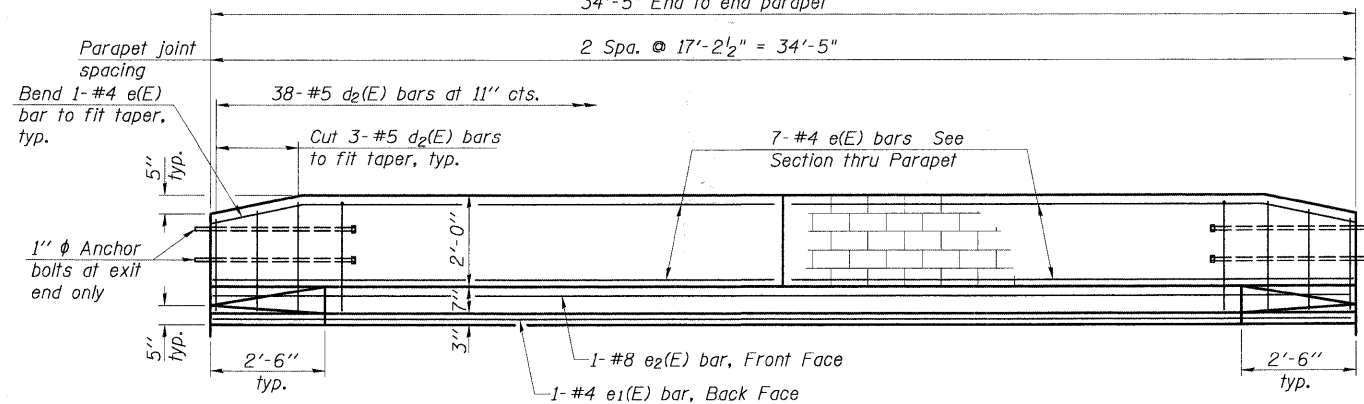
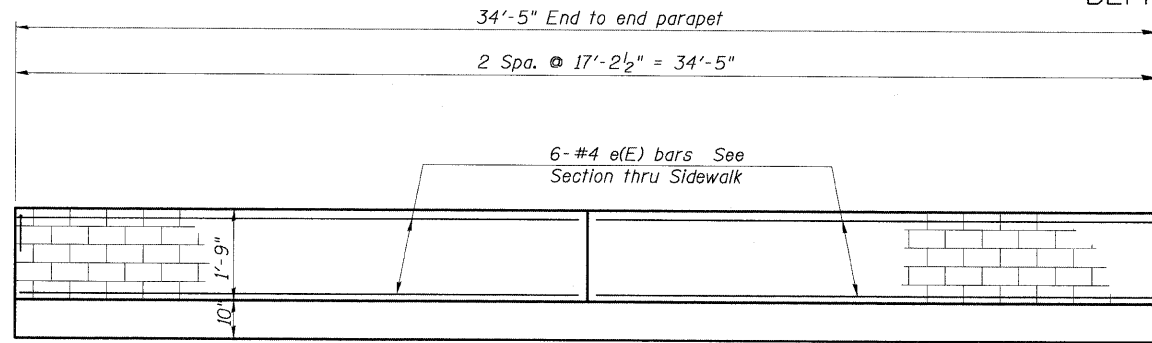
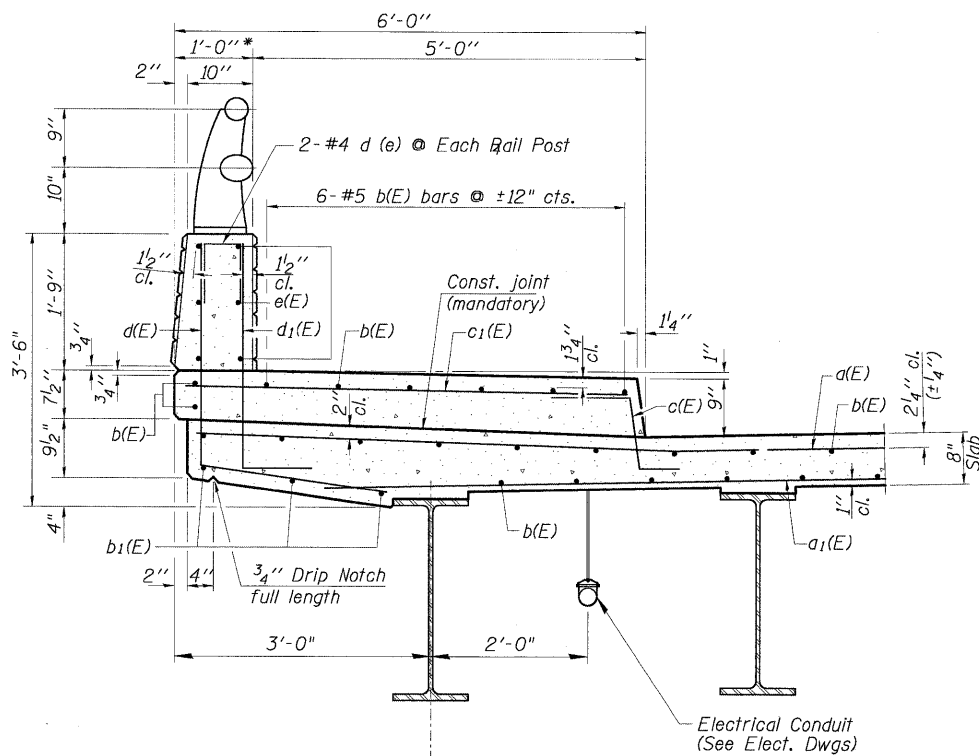


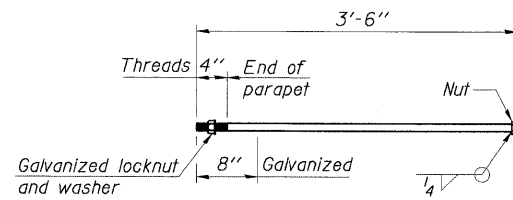
STATE OF ILLINOIS
DEPARTMENT OF TRANSPORTATION



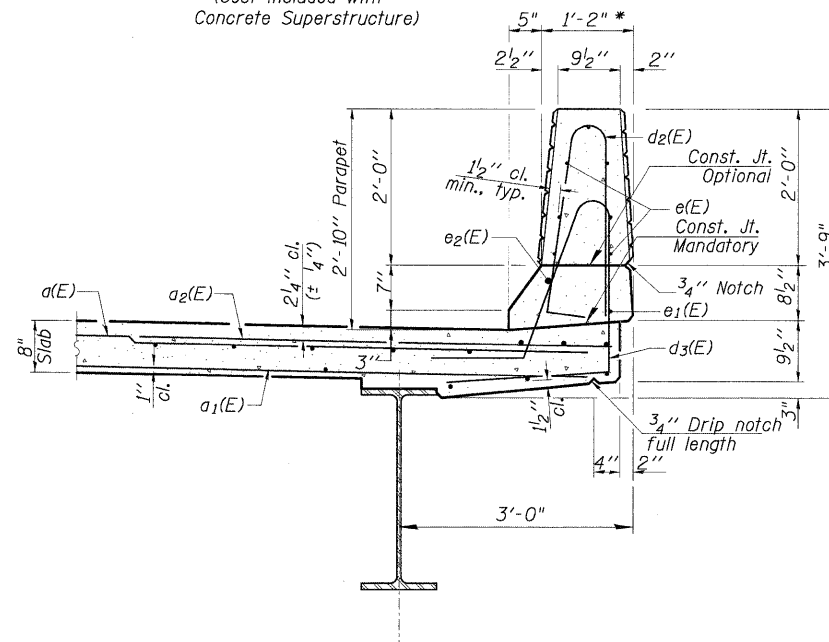
INSIDE ELEVATION OF SIDEWALK
(See Sheet S-9 For Aluminum Railing Post Spacing)



SECTION THRU SIDEWALK

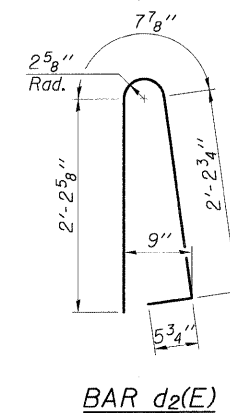


1" ANCHOR BOLT
(Cost included with Concrete Superstructure)

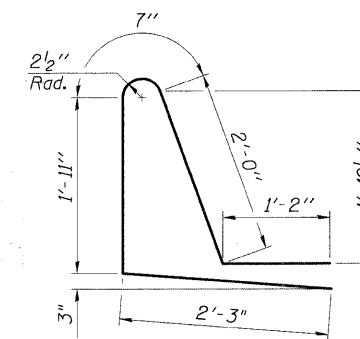


SECTION THRU PARAPET

INSIDE ELEVATION OF PARAPET



BAR d2(E)



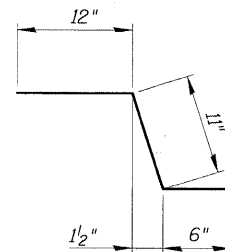
BAR d3(E)

**SUPERSTRUCTURE
BILL OF MATERIAL**

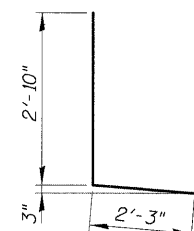
Bar	No.	Size	Length	Shape
a(E)	56	#5	39'-11"	—
a1(E)	42	#5	39'-3"	—
a2(E)	28	#6	6'-0"	—
b(E)	82	#5	34'-1"	—
c(E)	35	#5	2'-5"	—
c1(E)	35	#5	5'-6"	—
d(E)	35	#4	5'-1"	L
d1(E)	35	#6	3'-9"	L
d2(E)	38	#5	5'-7"	L
d3(E)	38	#5	7'-11"	L
d4(E)	8	#4	2'-0"	L
e(E)	26	#4	16'-11"	—
e1(E)	1	#4	34'-1"	—
e2(E)	1	#8	34'-1"	—
m(E)	4	#6	39'-8"	—
m1(E)	6	#6	40'-1"	—
m2(E)	24	#6	9'-8"	—
m3(E)	10	#6	6'-7"	—
m4(E)	4	#6	2'-8"	—
s(E)	82	#5	5'-1"	—
s1(E)	82	#4	7'-4"	—
v(E)	80	#5	3'-4"	—
Reinforcement Bars, Epoxy Coated			Pound	10,930
Concrete Superstructure			Cu. Yds.	63.2
Bar Splicer (E)			Each	80

Bars indicated thus 1 x 2-#8 etc. indicates 1 line of bars with 2 lengths per line.

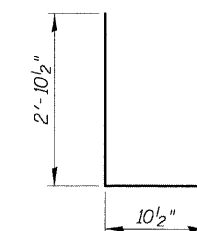
* Dimensions Are of Barrier Only. Add 5/8" For Formliner Relief To Each Side of Barrier.



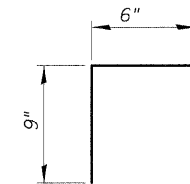
BAR c(E)



BAR d(E)



BAR d1(E)



BAR d4(E)

**SUPERSTRUCTURE DETAILS
WHITEHALL AVENUE OVER
ADDISON CREEK
F.A. RTE. 4025
SECTION 09-00071-00-BR
COOK COUNTY
STATION 30+67.04
STRUCTURE No. 016-7618**

DESIGNED -	200
CHECKED -	EXAMINED
DRAWN -	PASSED
CHECKED -	ENGINEER OF BRIDGE DESIGN
	ENGINEER OF BRIDGES AND STRUCTURES

SHEET NO. S-7 SHEETS	F.A. RTE.	SECTION	COUNTY	TOTAL SHEETS	SHEET NO.
	4025	09-00071-00-BR	COOK	31	19
CONTRACT NO. 63437					
FED. ROAD DIST. NO.		ILLINOIS FED. AID PROJECT			