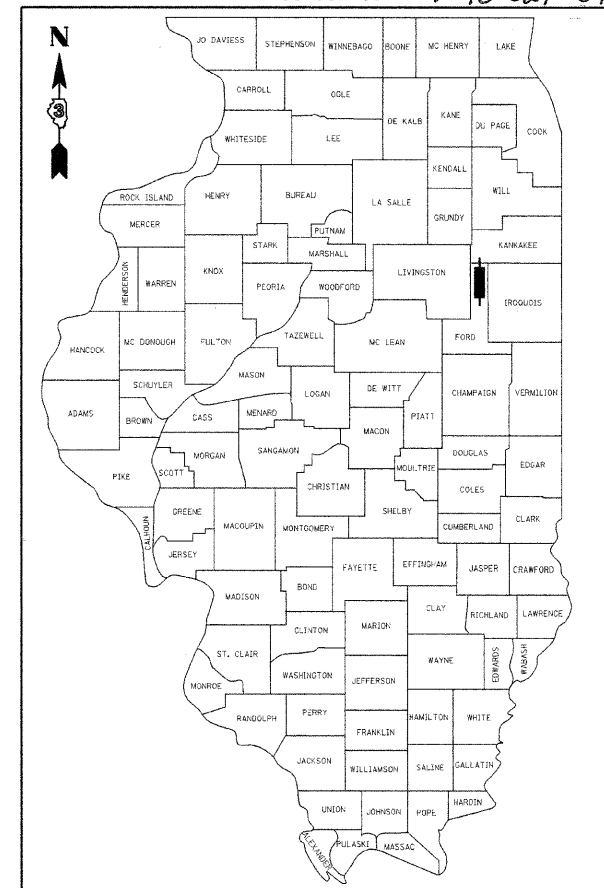


F.A.P. RTE.	SECTION	COUNTY	TOTAL SHEETS	SHEET NO.
796	104 I & 105 BR-1	FORD	51	1
FED. ROAD DIST. NO.		ILLINOIS	CONTRACT NO. 66848	
D-93-083-08		P-93-028-03		
D-93-007-09		P-93-029-07		



LOCATION OF SECTION INDICATED THUS:

FUNCTIONAL CLASSIFICATION

MINOR ARTERIAL (RURAL)
F.A.P. ROUTE 796 (IL 115)

2010 ADT = 500
P.V. = 84.5% S.U. = 11.1% M.U. = 4.4%

STATE OF ILLINOIS
DEPARTMENT OF TRANSPORTATION
DIVISION OF HIGHWAYS

SUBMITTED _____ 20 _____

Heory Deyan
DEPUTY DIRECTOR OF HIGHWAYS, REGION ENGINEER

January 29, 2010
Scott E. Still, P.E., P.D.
ENGINEER OF DESIGN AND ENVIRONMENT

January 29, 2010
Christine M. Reed, P.D.
DIRECTOR OF HIGHWAYS, CHIEF ENGINEER

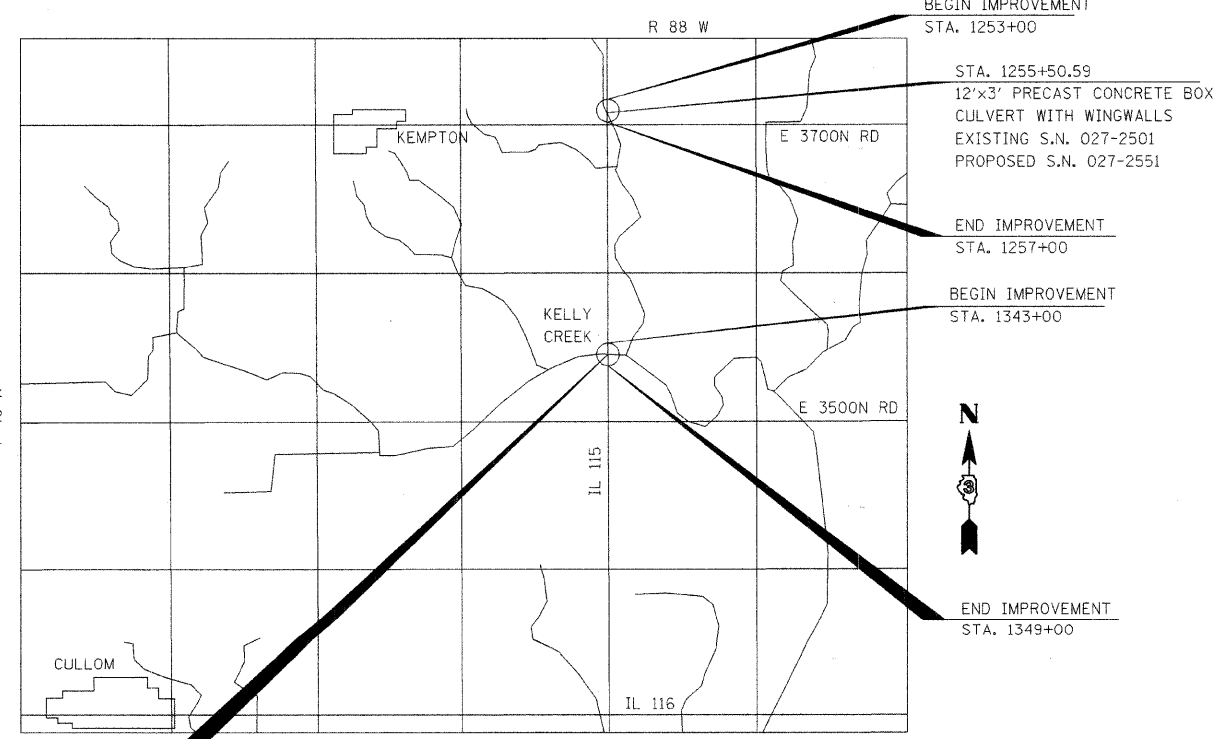
PRINTED BY THE AUTHORITY OF THE STATE OF ILLINOIS

STATE OF ILLINOIS
DEPARTMENT OF TRANSPORTATION
DIVISION OF HIGHWAYS

PROPOSED
HIGHWAY PLANS

F.A.P. ROUTE 796 (IL 115)
SECTION 104 I & 105 BR-1
PROJECT BRF-F-0796(014)
FORD COUNTY
C-93-125-08

REPLACEMENT OF THE EXISTING STRUCTURE OVER
KELLY CREEK DRAINAGE DITCH WITH A SINGLE SPAN BRIDGE
2.4 MILES N. OF IL 116 AND THE
REPLACEMENT OF AN EXISTING CULVERT OVER
A DRAINAGE DITCH WITH A PRECAST CONCRETE BOX
CULVERT
4.1 MILES N. OF IL 116



STA. 1345+92
SINGLE SPAN (64') COMPOSITE
WIDE FLANGE STEEL BEAM BRIDGE
WITH INTEGRAL ABUTMENTS
EXISTING S.N. 027-0033
PROPOSED S.N. 027-0097

LOCATION MAP
SCALE: NOT TO SCALE
GROSS LENGTH = 1000 FT. = 0.189 MI.
NET LENGTH = 536 FT. = 0.102 MI.

benesch
alfred benesch & company
Engineers • Surveyors • Planners
205 North Michigan Avenue, Suite 2400
Chicago, Illinois 60601
312-566-0450
Job # 3938.02

INDEX OF SHEETS

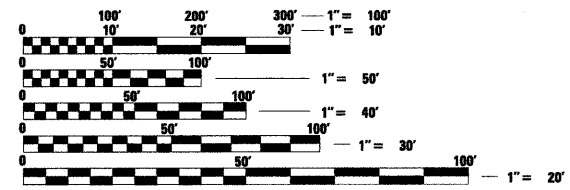
- 1 COVER SHEET
- 2 GENERAL NOTES & COMMITMENTS
- 3 SUMMARY OF QUANTITIES
- 4 TYPICAL SECTIONS
- 5 SCHEDULE OF QUANTITIES
- 6 TIE POINTS
- 7-8 BRIDGE PLAN AND PROFILE
- 9-10 CULVERT PLAN AND PROFILE
- 11-12 IL 115 - DETOUR PLAN
- 13-14 RIGHT OF WAY PLAN
- 15-36 BRIDGE PLANS
- 37-43 CULVERT PLANS
- 44 ROADWAY DETAILS
- 45-51 CROSS SECTIONS

HIGHWAY STANDARDS

- 000001-05 STANDARD SYMBOLS, ABBREVIATIONS AND PATTERNS
- 001001-02 AREAS OF REINFORCEMENT BARS
- 001006 DECIMAL OF AN INCH AND OF A FOOT
- 280001-05 TEMPORARY EROSION CONTROL SYSTEMS
- 420401-08 BRIDGE APPROACH PAVEMENT CONNECTOR
- 482001-02 HMA SHOULDER ADJACENT TO FLEXIBLE PAVEMENT
- 515001-03 NAME PLATE FOR BRIDGES
- 601001-03 SUB-SURFACE DRAINS
- 601101-01 CONCRETE HEADWALL FOR PIPE DRAIN
- 630001-08 STEEL PLATE BEAM GUARDRAIL
- 630201-06 PCC / HMA STABILIZATION AT STEEL PLATE BEAM GUARDRAIL
- 630301-05 SHOULDER WIDENING FOR TYPE 1 (SPECIAL) GUARDRAIL TERMINALS
- 631031-08 TRAFFIC BARRIER TERMINAL, TYPE 6
- 635006-03 REFLECTOR AND TERMINAL MARKER PLACEMENT
- 635011-02 REFLECTOR MARKER AND MOUNTING DETAILS
- 666001-01 RIGHT OF WAY MARKERS
- 667101-01 PERMANENT SURVEY MARKERS
- 701001-02 OFF-RD OPERATIONS, 2L, 2W, MORE THAN 15' (4.5m) AWAY
- 701006-03 OFF-RD OPERATIONS, 2L, 2W, 15' (4.5m) TO 24' FROM PAVEMENT EDGE
- 701011-02 OFF-RD MOVING OPERATIONS, 2L, 2W, DAY ONLY
- 701201-03 LANE CLOSURE, 2L, 2W, DAY ONLY, FOR SPEEDS > 45 MPH
- 701301-03 LANE CLOSURE, 2L, 2W, SHORT TIME OPERATIONS
- 701306-02 LANE CLOSURE, 2L, 2W, SLOW MOVING OPERATIONS DAY ONLY, FOR SPEEDS > 45 MPH
- 701901-01 TRAFFIC CONTROL DEVICES
- 781001-03 TYPICAL APPLICATIONS RAISED REFLECTIVE PAVEMENT MARKERS

B.L.R. 21-8 TYPICAL APPLICATION OF TRAFFIC CONTROL DEVICES FOR CONSTRUCTION ON RURAL LOCAL HIGHWAYS

MICROFILMED _____
REEL NUMBER _____
AWARDED _____
RESIDENT ENGINEER _____
AS BUILT CHANGES WERE MADE ON THE FOLLOWING SHEETS _____



FULL SIZE PLANS HAVE BEEN PREPARED USING STANDARD ENGINEERING SCALES. REDUCED SIZED PLANS WILL NOT CONFORM TO STANDARD SCALES. IN MAKING MEASUREMENTS ON REDUCED PLANS, THE ABOVE SCALES MAY BE USED.

J.U.L.I.E.
JOINT UTILITY LOCATION INFORMATION FOR EXCAVATION
1-800-892-0123
OR 811

PROJECT ENGINEER: JOE KANNEL
UNIT CHIEF: MICHELE LINDEMANN
DISTRICT 3 NO. (815) 434-6131
CONTRACT NO. 66848

