

STATE OF ILLINOIS  
DEPARTMENT OF TRANSPORTATION

**GENERAL NOTES**

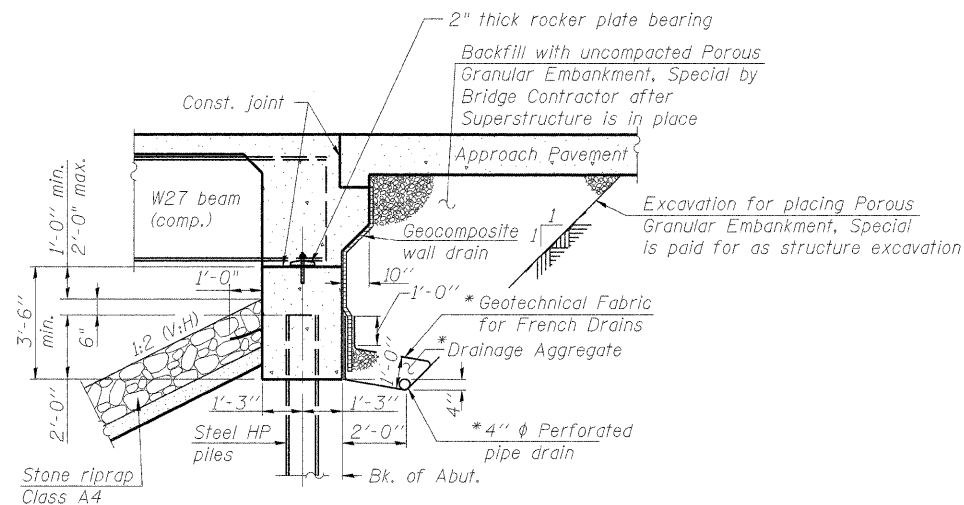
- Fasteners shall be AASHTO M164 Type 1, mechanically galvanized bolts in painted areas and M164 Type 3 in unpainted areas. Bolts  $\frac{3}{4}$ "  $\phi$ , holes  $\frac{15}{16}$ "  $\phi$ , unless otherwise noted.
- Calculated weight of Structural Steel = 59,320 lbs.
- All structural steel shall be AASHTO M270 Grade 50W.
- No field welding is permitted except as specified in the contract documents.
- Reinforcement bars shall conform to the requirements of ASTM A706 Gr. 60. See Special Provision.
- Reinforcement Bars designated (E) shall be epoxy coated.
- Structural steel shall only be painted for a distance equal to the depth of embedment into the concrete cap plus 3". Those areas shall be primed in the shop with a Department approved zinc rich primer. No field painting shall be required. All structural steel shall be cleaned as specified in the Special Provision for "Surface Preparation and Painting Requirements for Weathering Steel".
- Layout of the slope protection system may be varied to suit ground conditions in the field as directed by the Engineer.
- The contractor shall drive test piles to 110% of the nominal required bearing specified in production locations at substructures specified or approved by the Engineer before ordering the remainder of piles.
- The contractor is advised that the existing superstructure is in a deteriorated condition with reduced load carrying capacity. It is the contractor's responsibility to account for the condition of the beams when developing construction procedures for removal and replacement of the superstructure.

**INDEX OF SHEETS**

- General Plan and Elevation
- General Notes, Index of Sheets and Total Bill of Material
- Foundation Layout
- Top of Slab Elevations 1 of 2
- Top of Slab Elevations 2 of 2
- Top of Approach Slab Elevations 1 of 2
- Top of Approach Slab Elevations 2 of 2
- Deck Plan and Cross Section
- Superstructure Details
- Integral Abutment Diaphragm Details
- Bridge Approach Slab Details 1 of 2
- Bridge Approach Slab Details 2 of 2
- Framing Plan and Steel Details
- Moment Table and Bearing Details
- North Abutment Details
- South Abutment Details
- HP Pile Details
- Bar Splicer Assembly Details
- Concrete Parapet Slipforming Option
- Cantilever Forming Brackets for Superstructures with W27 Beams and Smaller
- Soil Boring Logs 1 of 2
- Soil Boring Logs 2 of 2

**TOTAL BILL OF MATERIAL**

ITEM	UNIT	SUPER	SUB	TOTAL
Porous Granular Embankment, Special	Cu. Yd.		90	90
Stone Riprap, Class A4	Sq. Yd.		523	523
Filter Fabric	Sq. Yd.		523	523
Removal of Existing Structures	Each			1
Structure Excavation	Cu. Yd.		189	189
Floor Drains	Each	8		8
Concrete Structures	Cu. Yd.		53.3	53.3
Concrete Superstructure	Cu. Yd.	193.8		193.8
Bridge Deck Grooving	Sq. Yd.	413		413
Concrete Encasement	Cu. Yd.		4.2	4.2
Protective Coat	Sq. Yd.	528		528
Furnishing and Erecting Structural Steel	L. Sum	1		1
Stud Shear Connectors	Each	1134		1134
Reinforcement Bars, Epoxy Coated	Pound	44,440	5,140	49,580
Bar Splicers	Each	64		64
Furnishing Steel Piles, HP12x53	Ft.		505	505
Driving Piles	Ft.		505	505
Test Pile Steel, HP12x53	Each		2	2
Name Plates	Each	1		1
Anchor Bolts, 1"	Each		24	24
Geocomposite Wall Drain	Sq. Yd.		67	67
Pipe Underdrains For Structures, 4"	Ft.		118	118



**SECTION THRU INTEGRAL ABUTMENT**  
(Horiz. dim. @ Rt. L's)

\* Included in the cost of Pipe Underdrains for Structures.

Note:  
All drainage system components shall extend to 2'-0" from the end of each wingwall except an outlet pipe shall extend until intersecting with the side slopes. The pipes shall drain into concrete headwalls. (See Article 601.05 of the Standard Specifications and Highway Standard 601101).

DESIGNED -	MRB
CHECKED -	KWS
DRAWN -	VH
CHECKED -	MRB

**benesch**  
alfred benesch & company  
Engineers • Surveyors • Planners  
205 North Michigan Avenue, Suite 2400  
Chicago, Illinois 60601  
312-565-0450  
Job # 3938.02

**GENERAL NOTES, INDEX OF SHEETS  
AND TOTAL BILL OF MATERIAL  
STRUCTURE NO. 027-0097**

SHEET NO. S2	F.A.P. RTE.	SECTION	COUNTY	TOTAL SHEETS	SHEET NO.
	796	104 I & 105 BR-1	FORD	51	16
SHEETS S22	CONTRACT NO. 66848				
FED. ROAD DIST. NO.		ILLINOIS	FED. AID PROJECT		