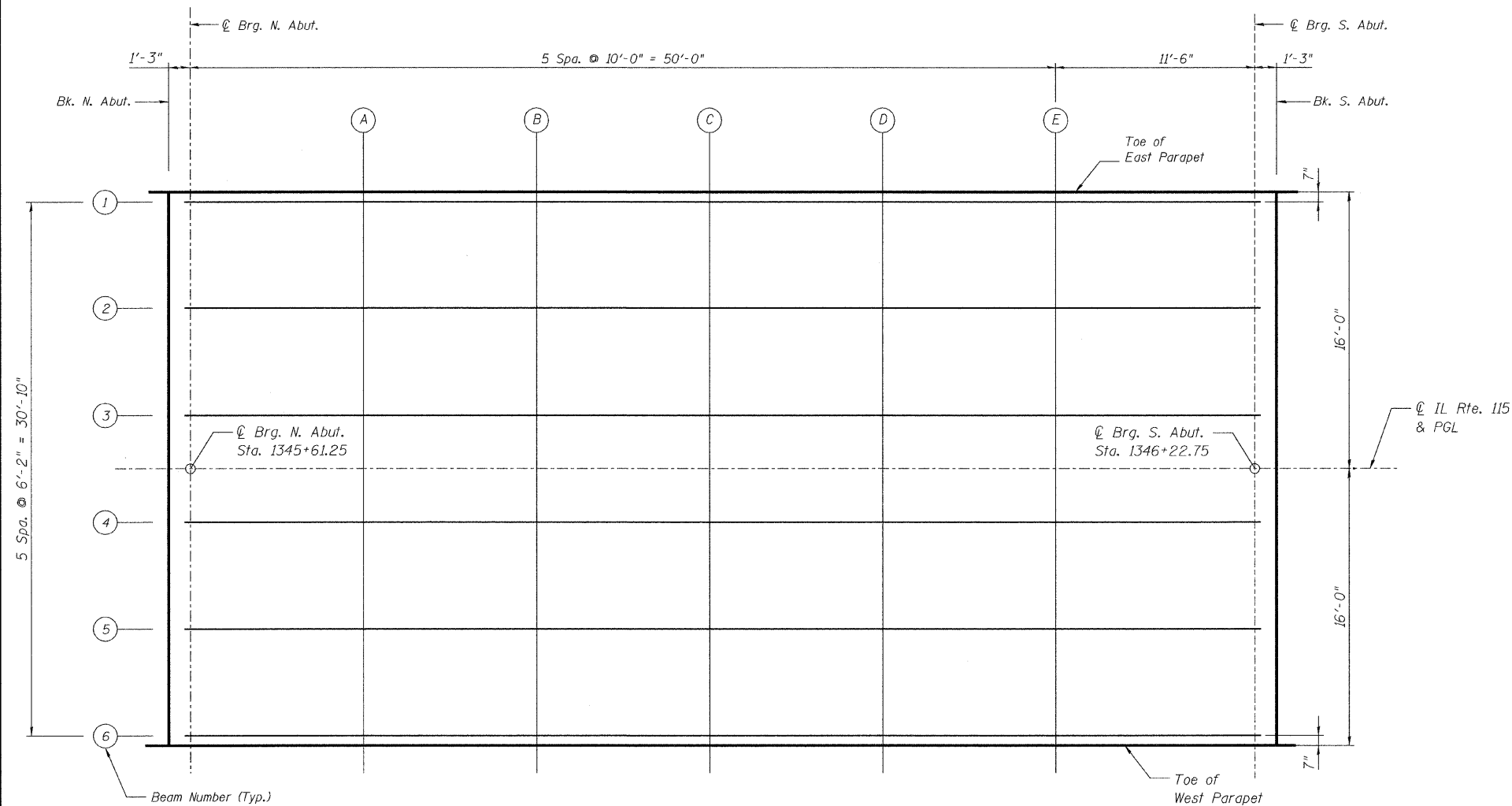
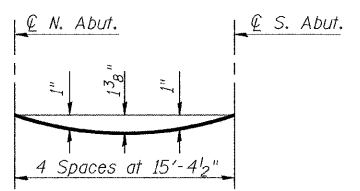


STATE OF ILLINOIS
DEPARTMENT OF TRANSPORTATION
DEPARTMENT OF TRANSPORTATION

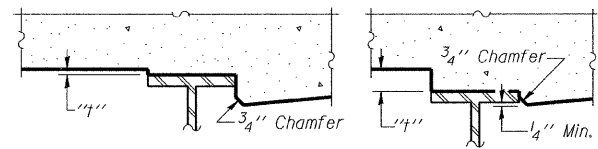


PLAN



DEAD LOAD DEFLECTION DIAGRAM
(Includes weight of concrete only.)

Note:
The above deflections are not to be used in the field if the engineer is working from the grade elevations adjusted for dead load deflections as shown in tables.



At Minimum Fillet At Maximum Fillet

To determine "I": After all structural steel has been erected, elevations of the top flanges of the beams shall be taken at intervals shown in tables. These elevations subtracted from the "Theoretical Grade Elevations Adjusted for Dead Load Deflection" shown in tables, minus slab thickness, equals the fillet heights "I" above top flange of beams.

FILLET HEIGHTS

DESIGNED -	MRB
CHECKED -	KWS
DRAWN -	VH
CHECKED -	MRB

benesch

alfred benesch & company
Engineers • Surveyors • Planners
205 North Michigan Avenue, Suite 2400
Chicago, Illinois 60601
312-565-0450
Job # 3936.02

BEAM 1

Location	Station	Offset	Theoretical Grade Elevations	Theoretical Grade Elevations Adjusted For Dead Load Deflection
Bk. N. Abut.	1345+60.00	-15.417	678.98	678.98
⊕ Brg. N. Abut.	1345+61.25	-15.417	678.98	678.98
A	1345+71.25	-15.417	678.99	679.05
B	1345+81.25	-15.417	679.00	679.09
C	1345+91.25	-15.417	679.00	679.11
D	1346+01.25	-15.417	679.00	679.10
E	1346+11.25	-15.417	679.00	679.06
⊕ Brg. S. Abut.	1346+22.75	-15.417	678.98	678.98
Bk. S. Abut.	1346+24.00	-15.417	678.98	678.98

BEAM 2

Location	Station	Offset	Theoretical Grade Elevations	Theoretical Grade Elevations Adjusted For Dead Load Deflection
Bk. N. Abut.	1345+60.00	-9.250	679.09	679.09
⊕ Brg. N. Abut.	1345+61.25	-9.250	679.09	679.09
A	1345+71.25	-9.250	679.11	679.16
B	1345+81.25	-9.250	679.11	679.21
C	1345+91.25	-9.250	679.12	679.23
D	1346+01.25	-9.250	679.12	679.22
E	1346+11.25	-9.250	679.11	679.18
⊕ Brg. S. Abut.	1346+22.75	-9.250	679.10	679.10
Bk. S. Abut.	1346+24.00	-9.250	679.10	679.10

TOP OF SLAB ELEVATIONS 1 OF 2
STRUCTURE NO. 027-0097

SHEET NO. S4	F.A.P. RTE. 796	SECTION 104 I & 105 BR-1	COUNTY FORD	TOTAL SHEETS 51	SHEET NO. 18
SHEETS S22	CONTRACT NO. 66848			FED. ROAD DIST. NO. ILLINOIS FED. AID PROJECT	