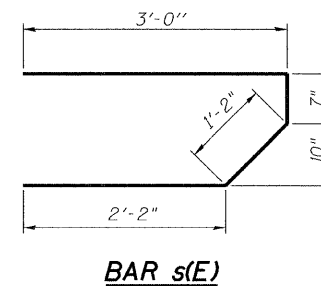
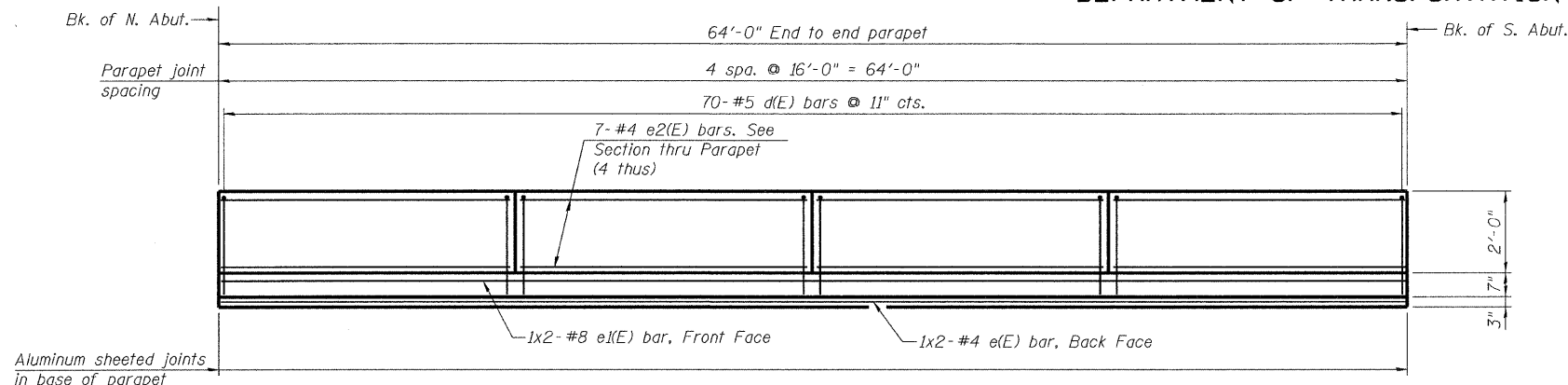
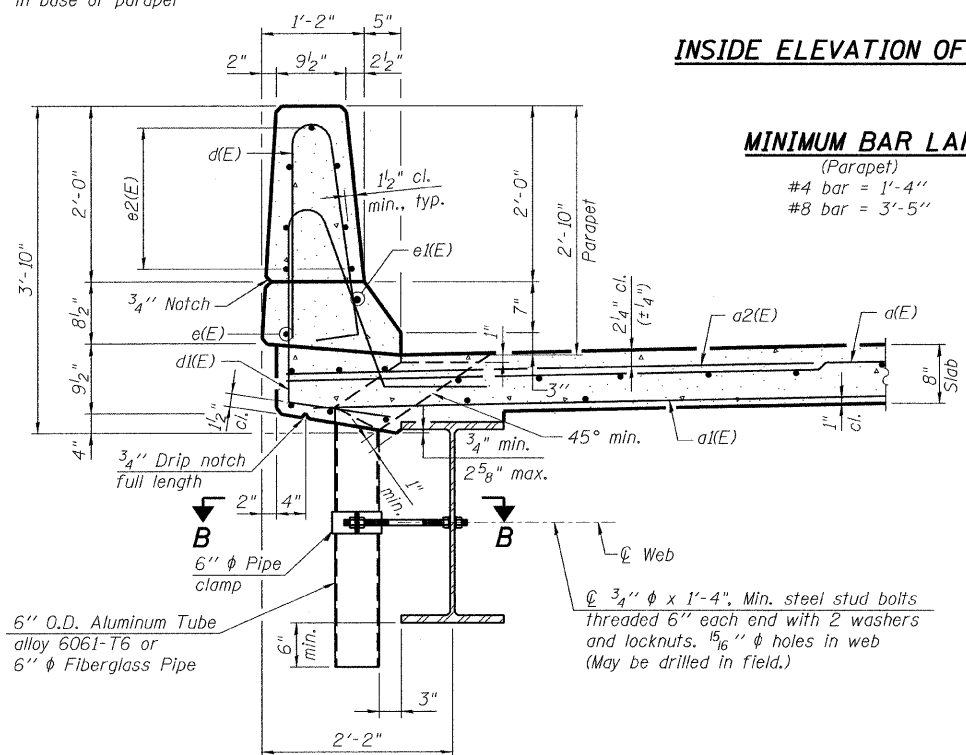


STATE OF ILLINOIS  
DEPARTMENT OF TRANSPORTATION



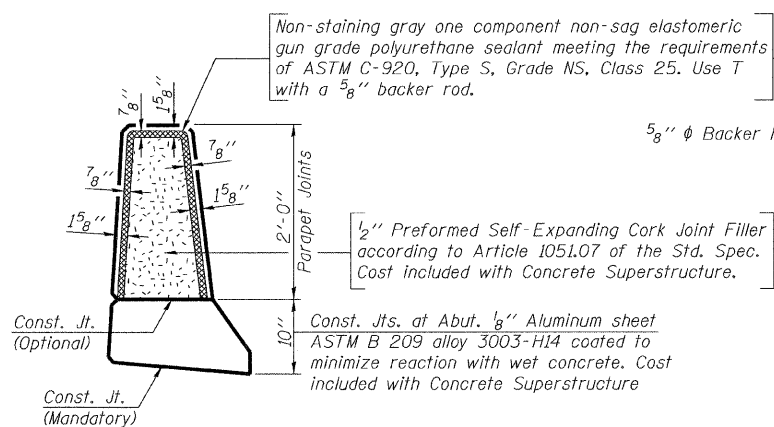
Aluminum sheeted joints in base of parapet

**INSIDE ELEVATION OF PARAPET**



**MINIMUM BAR LAP**

(Parapet)  
#4 bar = 1'-4"  
#8 bar = 3'-5"

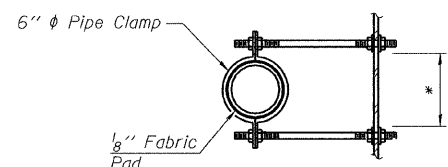


**PARAPET JOINT DETAILS**

**NOTES:**

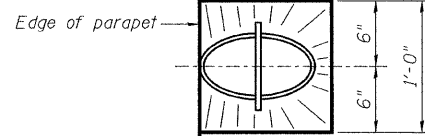
1. Floor drains need not be painted.
2. Fiberglass pipe shall conform to ASTM D 2996, with short-time rupture strength hoop tensile stress of 30,000 p.s.i. minimum.
3. Galvanize clamping device according to AASHTO M232.
4. Drains shall be located clear of all diaphragms.
5. Work this sheet with sheets S8 and S10.

**SECTION THRU PARAPET**



**SECTION B-B**

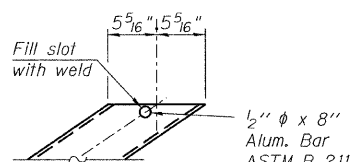
\*Dimension as required by Pipe Clamp



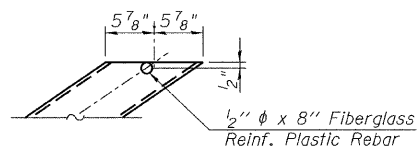
**TOP PLAN**

**TOP PLAN**

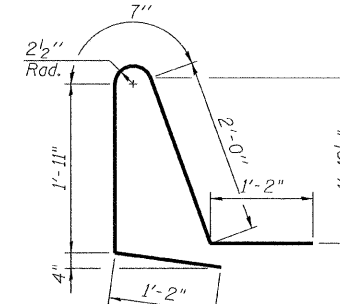
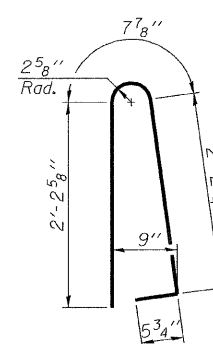
(Showing Aluminum Tube)



**ALUMINUM TUBE**



**FIBERGLASS PIPE**



**BAR d1(E)**

**SUPERSTRUCTURE  
BILL OF MATERIAL**

Bar	No.	Size	Length	Shape
a(E)	110	#5	34'-6"	—
a1(E)	77	#5	34'-3"	—
a2(E)	110	#6	6'-0"	—
b(E)	76	#5	33'-0"	—
b1(E)	31	#5	40'-0"	—
b2(E)	31	#5	26'-0"	—
d(E)	140	#5	5'-7"	⌒
d1(E)	140	#5	6'-10"	⌒
e(E)	4	#4	32'-6"	—
e1(E)	4	#8	33'-6"	—
e2(E)	56	#4	15'-8"	—
m(E)	20	#6	18'-10"	—
m1(E)	24	#6	8'-3"	—
m2(E)	10	#6	5'-10"	—
m3(E)	4	#6	1'-10"	—
s(E)	72	#5	6'-11"	⌒
s1(E)	72	#4	8'-2"	⌒
v(E)	72	#5	3'-4"	⌒
Reinforcement Bars, Epoxy Coated			Pound	17,340
Concrete Superstructure			Cu. Yd.	91.8

Bars indicated thus 1 x 2- #5 etc. indicates 1 line of bars with 2 lengths per line.

**SUPERSTRUCTURE DETAILS  
STRUCTURE NO. 027-0097**

DESIGNED	MRB
CHECKED	KWS
DRAWN	YH
CHECKED	MRB

**benesch**

alfred benesch & company  
Engineers • Surveyors • Planners  
205 North Michigan Avenue, Suite 2400  
Chicago, Illinois 60601  
312-565-0450  
Job # 3838.02

SHEET NO. S9	F.A.P. RTE.	SECTION	COUNTY	TOTAL SHEETS	SHEET NO.
SHEETS S22	796	104 I & 105 BR-1	FORD	51	23
			CONTRACT NO. 66848		
FED. ROAD DIST. NO.		ILLINOIS FED. AID PROJECT			