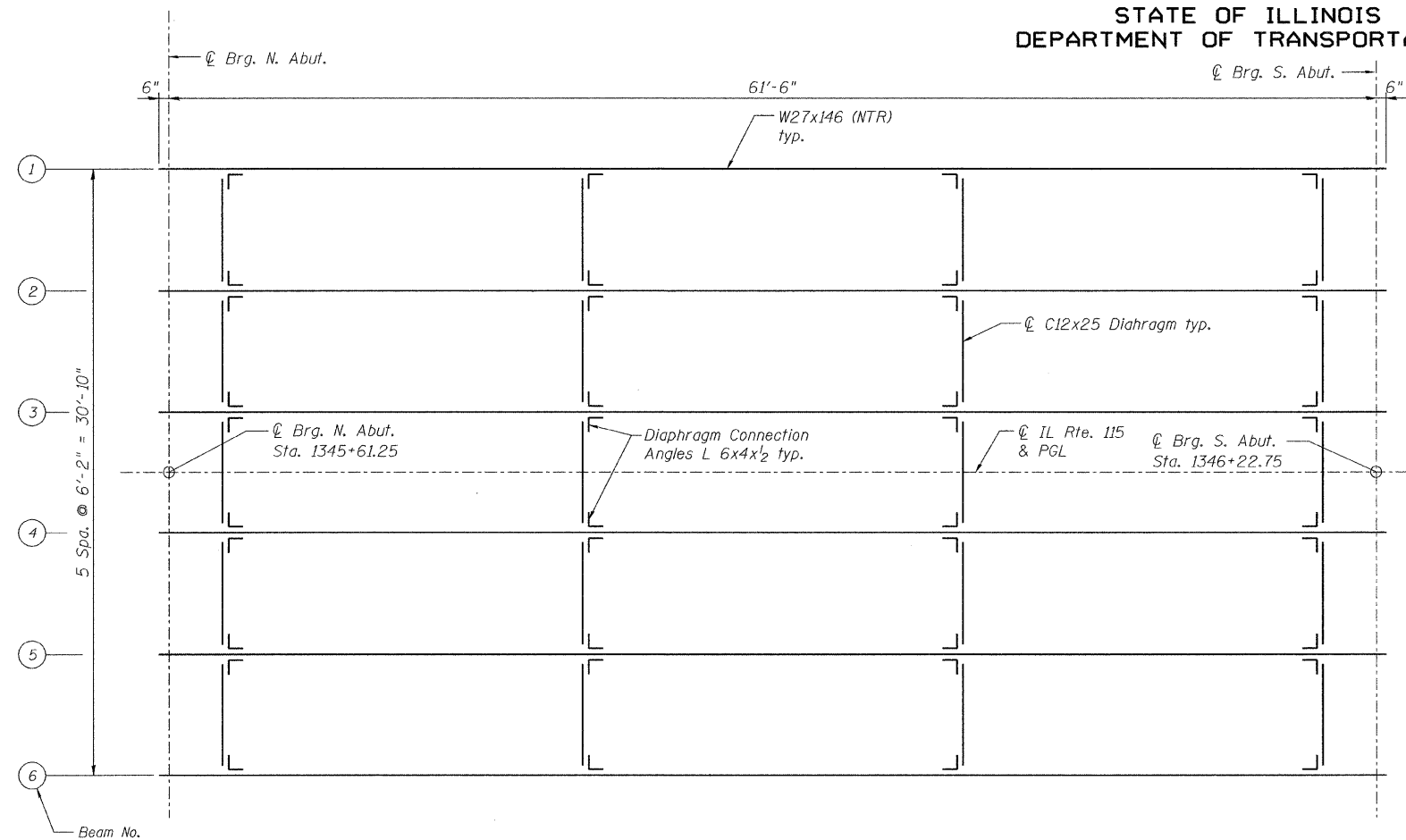
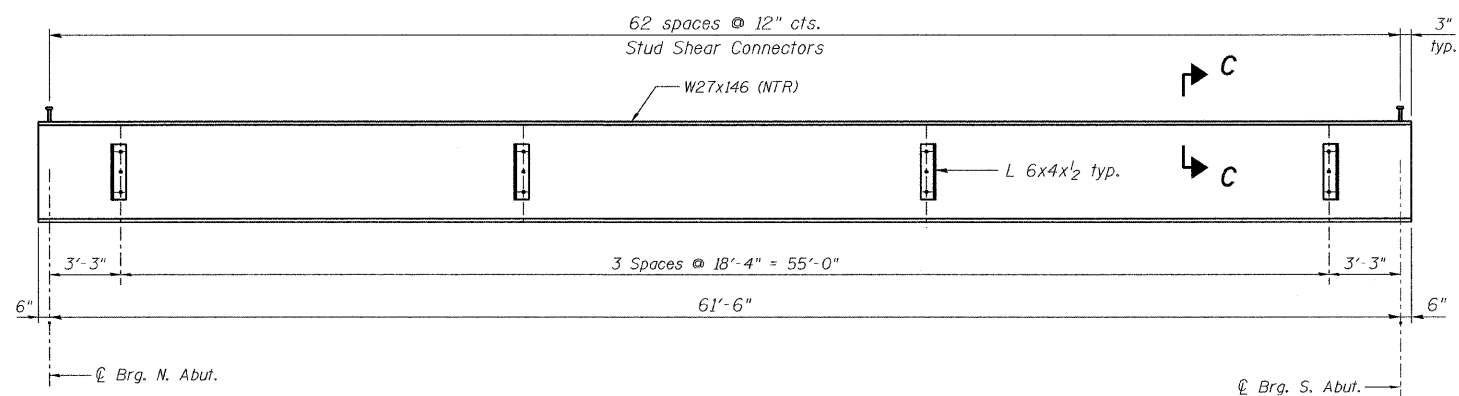


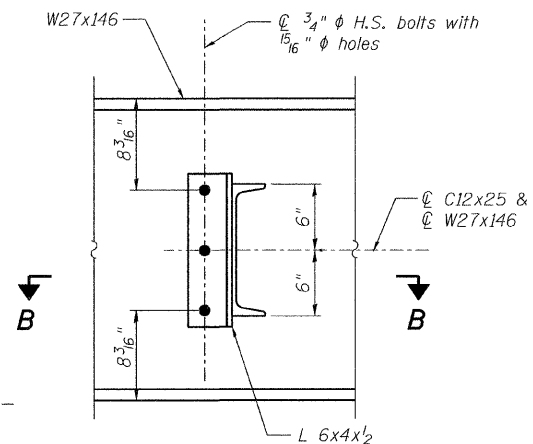
STATE OF ILLINOIS
DEPARTMENT OF TRANSPORTATION



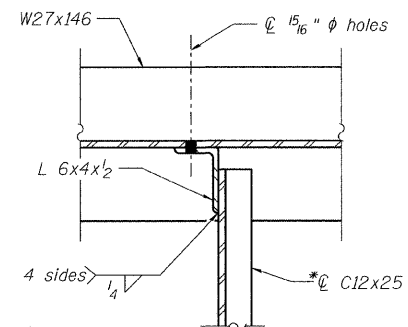
FRAMING PLAN



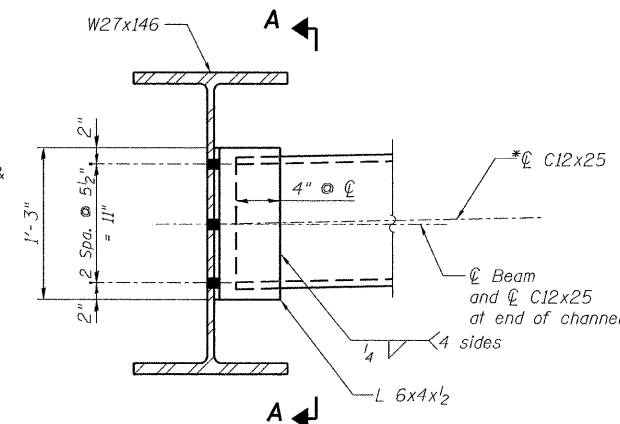
BEAM ELEVATION



SECTION A-A



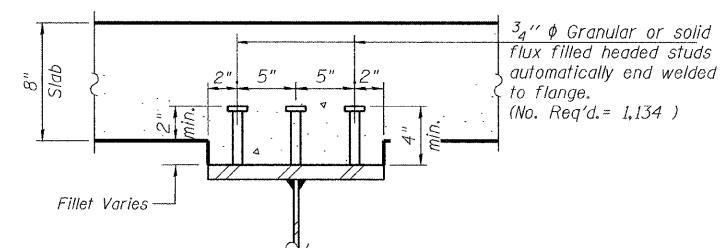
SECTION B-B



DIAPHRAGM DETAIL

NOTES:

- Two hardened washers required for each set of oversized holes.
- *Alternate channels (C12x30) are permitted to facilitate material acquisition. Calculated weight of structural steel is based on the lighter section.
- The alternate, if utilized, shall be provided at no additional cost to the Department.
- All diaphragms shall be installed as steel is erected and secured with erection pins and bolts except as otherwise noted. Individual diaphragms at supports may be temporarily disconnected to install bearing anchor rods.
- Load carrying components designated "NTR" shall conform to the Supplemental Requirements for Notch Toughness, Zone 2.
- Work this sheet with sheet S14.



SECTION C-C

DESIGNED	MRB
CHECKED	KWS
DRAWN	VH
CHECKED	MRB

benesch

alfred benesch & company
Engineers • Surveyors • Planners
205 North Michigan Avenue, Suite 2400
Chicago, Illinois 60601
312-565-0450
Job # 3938.02

**FRAMING PLAN AND STEEL DETAILS
STRUCTURE NO. 027-0097**

SHEET NO. S13	F.A.P. RTE.	SECTION	COUNTY	TOTAL SHEETS	SHEET NO.
	796	104 I & 105 BR-1	FORD	51	27
SHEETS S22	CONTRACT NO. 66848				
FED. ROAD DIST. NO.		ILLINOIS FED. AID PROJECT			