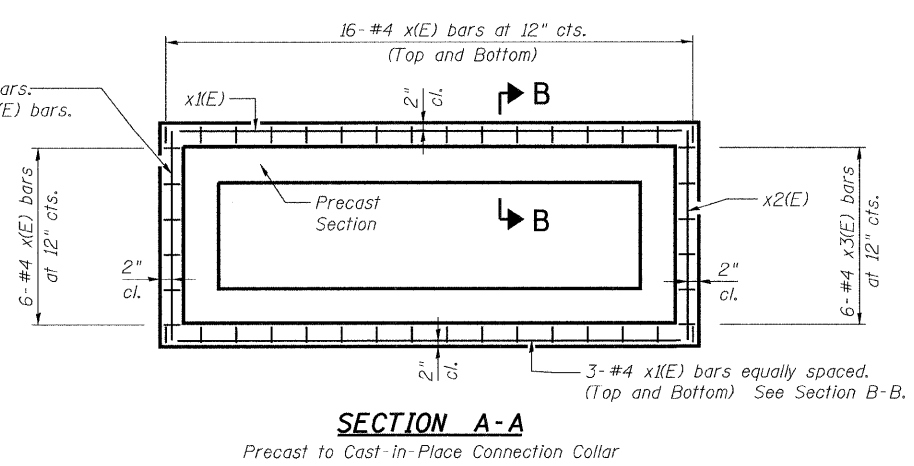
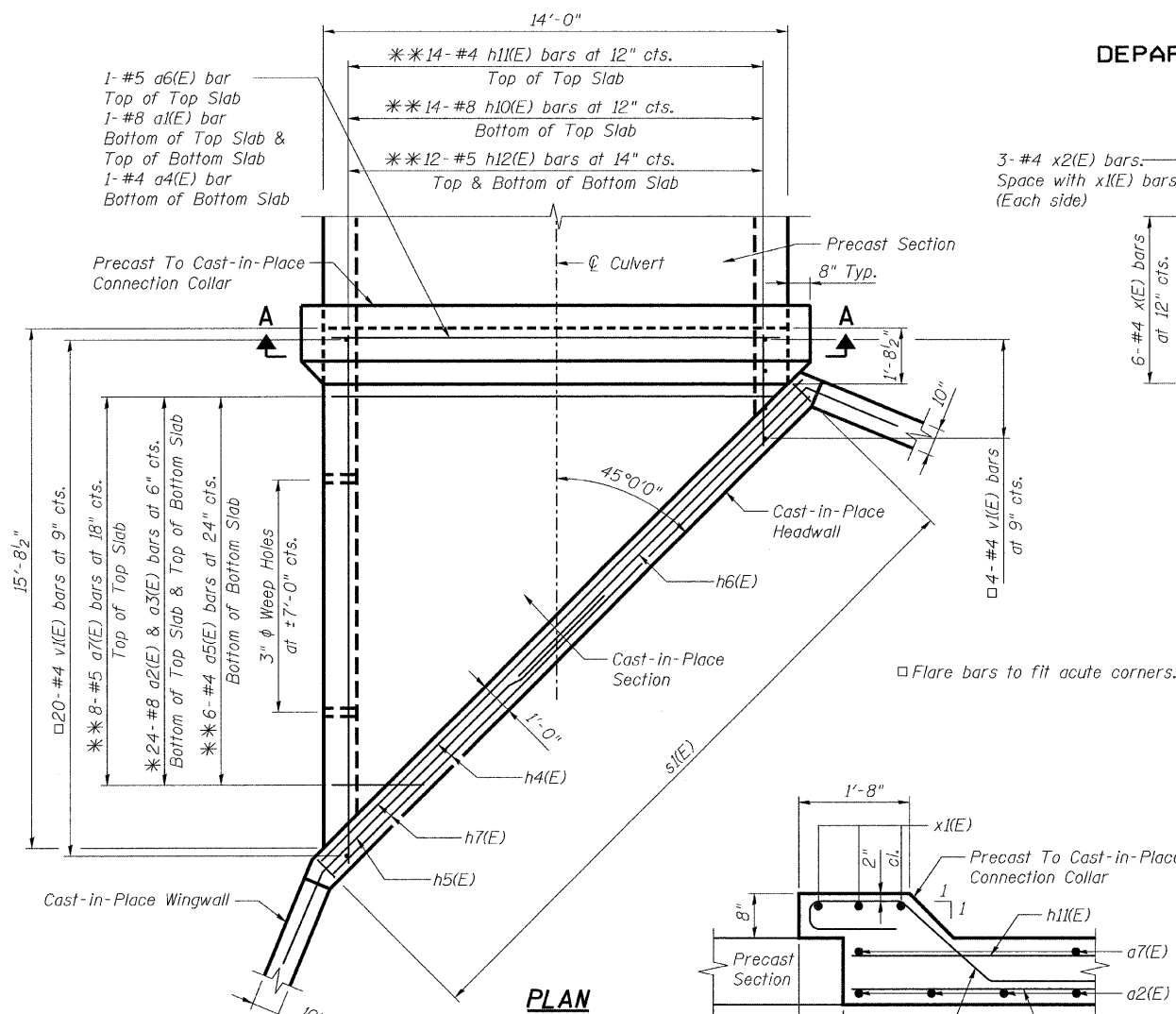


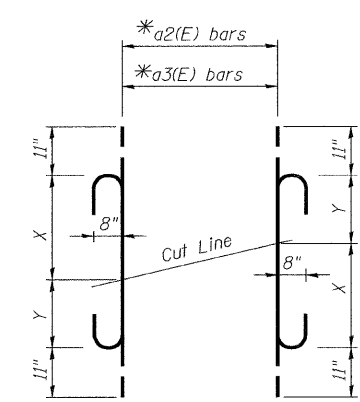
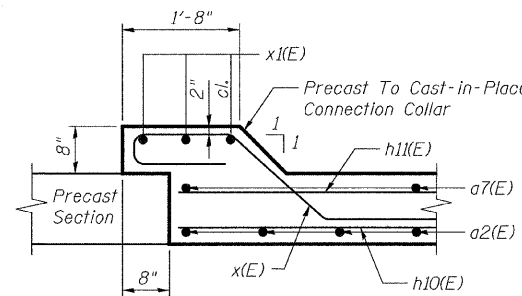
STATE OF ILLINOIS
DEPARTMENT OF TRANSPORTATION

BILL OF MATERIAL ***



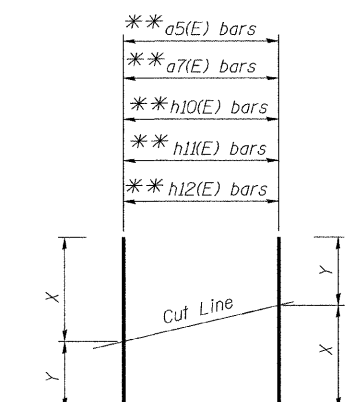
Bar	Size	No.	Length	Shape	
a1(E)	#8	2	14'-6"	U	
a2(E)	#8	24	7'-0"	U	
a3(E)	#8	24	16'-4"	U	
a4(E)	#4	2	12'-8"	—	
a5(E)	#4	6	13'-0"	—	
a6(E)	#5	2	12'-8"	—	
a7(E)	#5	8	14'-6"	—	
h10(E)	#8	14	18'-6"	—	
h11(E)	#4	14	18'-6"	—	
h12(E)	#5	24	18'-6"	—	
h13(E)	#5	6	15'-6"	—	
h14(E)	#5	6	3'-0"	—	
x(E)	#4	76	8'-2"	U	
x1(E)	#4	12	15'-0"	—	
x2(E)	#4	12	6'-0"	—	
x3(E)	#4	12	5'-10"	U	
v1(E)	#4	48	6'-8"	L	
Item				Unit	Total
Class SI Concrete				C.Y.	28
Reinforcement Bars, Epoxy Coated				Lbs.	4,030

*** For two end sections. The quantities shown are for information only.



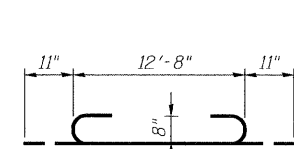
FIELD CUTTING DIAGRAM
* Order a2(E) & a3(E) bars full length. Cut to fit as shown and use remainder of bars in other side of CIP box.

Bar	X	Y
a2(E)	3'-8"	1'-6"
a3(E)	12'-6"	2'-0"

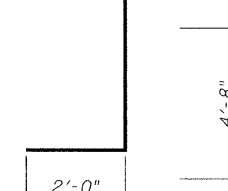


FIELD CUTTING DIAGRAM
* Order a5(E), a7(E), h10(E), h11(E), & h12(E) bars full length. Cut to fit as shown and use remainder of bars in other side of CIP box.

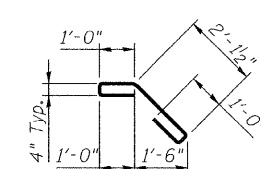
Bar	X	Y
a5(E)	11'-6"	1'-6"
a7(E)	12'-6"	2'-0"
h10(E)	15'-6"	3'-0"
h11(E)	15'-6"	3'-0"
h12(E)	15'-6"	3'-0"



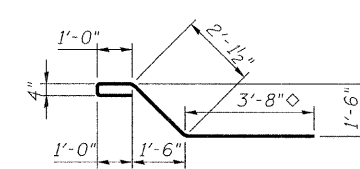
BAR a1(E)



BAR v1(E)

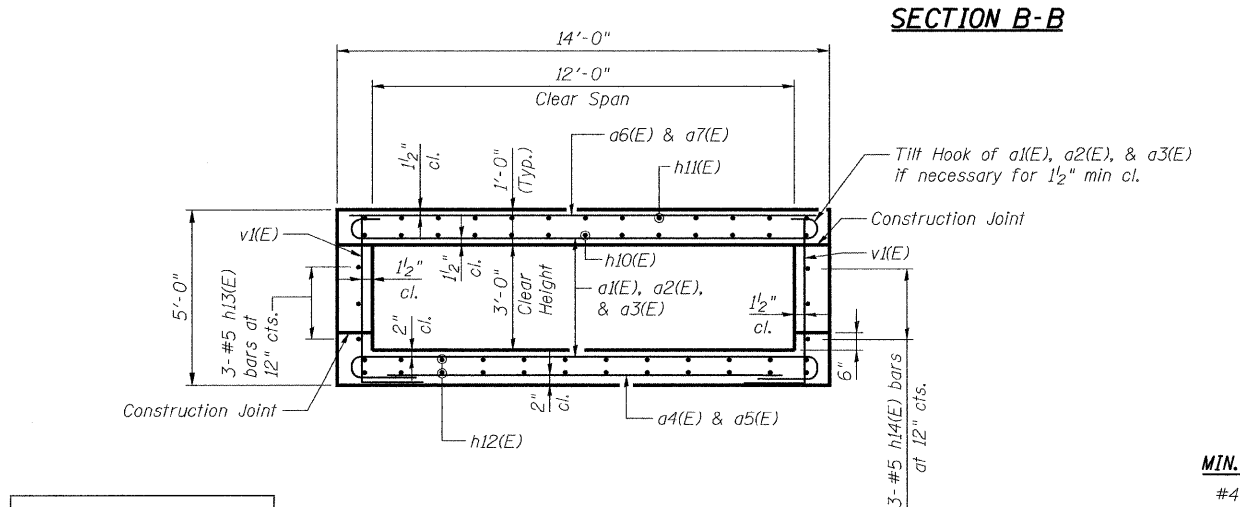


BAR x3(E)



BAR x(E)

◇ Cut bar in field to fit acute corner.



ELEVATION

MIN. BAR LAP
#4 - 1'-4"
#5 - 1'-8"
#7 - 2'-9"
#8 - 3'-8"

DESIGNED -	MFB
CHECKED -	MRB
DRAWN -	PT
CHECKED -	MFB

benesch
alfred benesch & company
Engineers • Surveyors • Planners
205 North Michigan Avenue, Suite 2400
Chicago, Illinois 60601
312-565-0450
Job # 3838.02

SHEET NO.	F.A.P. RTE.	SECTION	COUNTY	TOTAL SHEETS	SHEET NO.
S3	796	104 I & 105 BR-1	FORD	51	39
S7	CONTRACT NO. 66848				
FED. ROAD DIST. NO.		ILLINOIS FED. AID PROJECT			