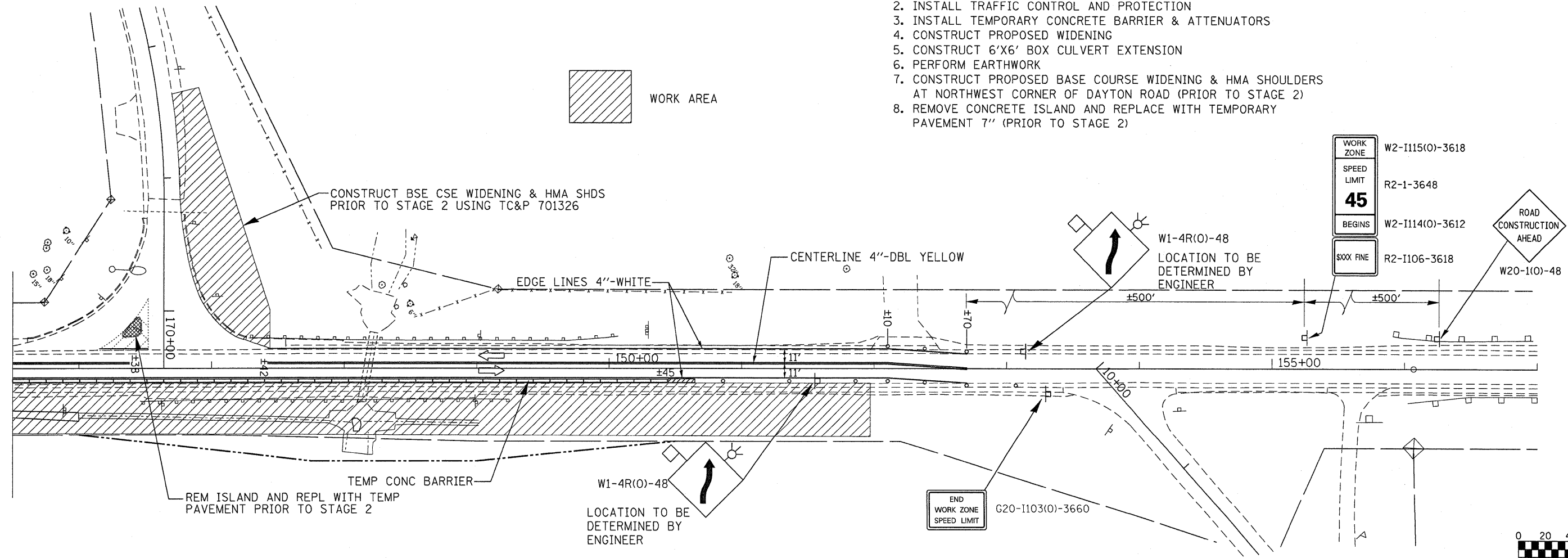


**STAGE 1 NOTES**

1. PERFORM TEMPORARY STRIPING & PAVEMENT MARKING REMOVAL
2. INSTALL TRAFFIC CONTROL AND PROTECTION
3. INSTALL TEMPORARY CONCRETE BARRIER & ATTENUATORS
4. CONSTRUCT PROPOSED WIDENING
5. CONSTRUCT 6'X6' BOX CULVERT EXTENSION
6. PERFORM EARTHWORK
7. CONSTRUCT PROPOSED BASE COURSE WIDENING & HMA SHOULDERS AT NORTHWEST CORNER OF DAYTON ROAD (PRIOR TO STAGE 2)
8. REMOVE CONCRETE ISLAND AND REPLACE WITH TEMPORARY PAVEMENT 7" (PRIOR TO STAGE 2)



FILE NAME =	USER NAME = duncanbd	DESIGNED -	REVISED -	<b>STATE OF ILLINOIS DEPARTMENT OF TRANSPORTATION</b>	<b>STAGE 1 CONSTRUCTION</b>			F.A.P. RTE. =	SECTION	COUNTY	TOTAL SHEETS	SHEET NO.
cr\pw_work\PWIDOT\DUNCANBD\dms31838\ep82588-sht-staging.DGN	2588-sht-staging.DGN	DRAWN -	REVISED -		311	(5)N	LASALLE	39	17			
PLOT SCALE = 40.0000' / IN.		CHECKED -	REVISED -		CONTRACT NO. 66857							
PLOT DATE = Dec 08, 2009 - 11:48:08 AM		DATE -	REVISED -		ILLINOIS FED. AID PROJECT							
				SCALE:	SHEET NO.	OF	SHEETS	STA.	TO STA.			