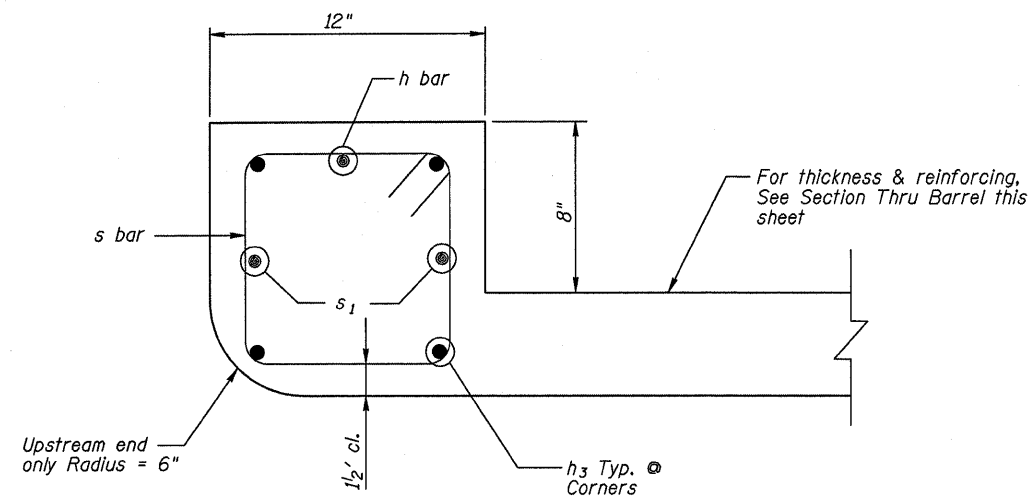


SCHEDULE

Bar	No.	Size	Length	Shape
a	6	#7	8'-10"	
a ₁	6	#5	7'-0"	—
b	2	#4	21'-0"	—
b ₁	1	#4	17'-8"	—
b ₂	1	#4	14'-4"	—
b ₃	1	#4	11'-6"	—
b ₄	1	#4	8'-3"	—
d	14	#4	4'-7"	
h	1	#4	6'-6"	—
h ₁	6	#4	11'-6"	—
h ₂	6	#4	8'-8"	—
h ₃	6	#6	6'-6"	—
h ₄	6	#7	3'-3"	—
h ₅	7	#4	3'-3"	—
h ₆	6	#5	4'-5"	
h ₇	6	#5	5'-7"	
h ₈	6	#5	3'-3"	—
s	7	#4	4'-1"	
s ₁	2	#4	28'-1"	
v (E)	1	#4	6'-6"	
v ₁ (E)	1	#4	6'-10"	
v ₂ (E)	1	#4	7'-2"	
v ₃ (E)	1	#4	7'-7"	
v ₄ (E)	1	#4	8'-0"	
v ₅ (E)	1	#4	8'-4"	
v ₆ (E)	1	#4	8'-8"	
v ₇ (E)	1	#4	9'-0"	
v ₈ (E)	1	#4	9'-4"	
v ₉ (E)	1	#4	6'-5"	
v ₁₀ (E)	1	#4	6'-8"	
v ₁₁ (E)	1	#4	6'-11"	
v ₁₂ (E)	1	#4	7'-3"	
v ₁₃ (E)	1	#4	7'-6"	
v ₁₄ (E)	1	#4	7'-9"	
v ₁₅ (E)	1	#4	8'-0"	
v ₁₆ (E)	1	#4	8'-3"	
v ₁₇ (E)	1	#4	8'-6"	
v ₁₈ (E)	1	#4	8'-10"	
v ₁₉ (E)	1	#4	9'-1"	
v ₂₀ (E)	1	#4	9'-4"	
w	5	#4	9'-1"	—
x	34	#4	5'-4"	
x ₁	6	#4	17'-8"	
Concrete Box Culverts		C.Y.	9.7	
Reinforcement Bars		Lbs.	820	
Rein Bars (Epoxy Ctd)		Lbs.	110	



SECTION THRU HEADWALL

