

F.A.S. RTE.	SECTION	COUNTY	TOTAL SHEETS	SHEET NO.
1323	(102)	KANKAKEE	11	1
		ILLINOIS CONTRACT NO. 66986		

P-93-010-10  
D-93-026-10

STATE OF ILLINOIS  
DEPARTMENT OF TRANSPORTATION  
DIVISION OF HIGHWAYS  
**PROPOSED  
HIGHWAY PLANS**

FAS ROUTE 1323 (ILL 115)  
SECTION (102)

TYPE of IMPROVEMENT-  
BOX CULVERT REPLACEMENT  
KANKAKEE COUNTY

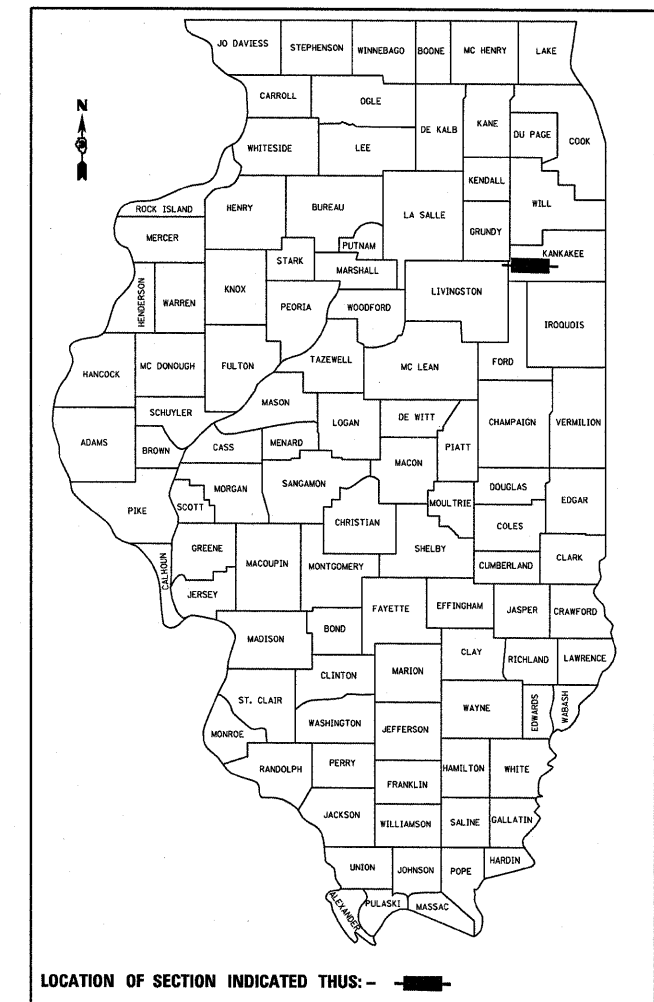
C-93-065-10

INDEX OF SHEETS

- 1 COVER SHEET & HIGHWAY STANDARDS
- 2 GENERAL NOTES AND TYPICAL SECTION
- 3 SUMMARY OF QUANTITIES
- 4 SCHEDULES
- 5 PLAN & PROFILE
- 6 GRATE DETAIL
- 7 GENERAL DETAIL SHEET
- 8 EXISTING STRUCTURE
- 9 BOX CULVERT DETAIL
- 10 BOX CULVERT END SECTION DETAIL
- 11 CROSS SECTION

STANDARDS

- 000001-05 STANDARD SYMBOLS, ABBREVIATIONS AND PATTERNS
- 001006 DECIMAL OF AN INCH AND OF A FOOT
- 280001-05 TEMPORARY EROSION CONTROL SYSTEMS
- 666001-01 RIGHT-OF-WAY MARKERS
- 667101-01 PERMANENT SURVEY MARKERS
- 701001-02 OFF-ROAD OPERATIONS 2L, 2W, MORE THAN 15' (4.5 m) AWAY
- 701006-03 OFF-ROAD OPERATIONS 2L, 2W, 15' (4.5 m) TO 24" (600 mm) FROM PAVEMENT EDGE
- 701011-02 OFF-ROAD MOVING OPERATIONS 2L, 2W, DAY ONLY
- 701201-03 LANE CLOSURE, 2L, 2W, DAY ONLY, FOR SPEEDS \*\*e" 45 MPH
- 701301-03 LANE CLOSURE, 2L, 2W, SHORT TIME OPERATIONS
- 701306-02 LANE CLOSURE, 2L, 2W, SLOW MOVING OPERATIONS DAY ONLY, FOR SPEEDS \*\*e" 45 MPH
- 701901-01 TRAFFIC CONTROL DEVICES
- 780001-02 TYPICAL PAVEMENT MARKINGS
- 781001-03 TYPICAL APPLICATIONS RAISED REFLECTIVE PAVEMENT MARKERS



LOCATION OF SECTION INDICATED THUS: - - -

HIGHWAY CLASSIFICATION MAJOR COLLECTOR (RURAL)  
ADT (2009) 2350 P.C. = 85% S.U. = 10% M.U. = 5%

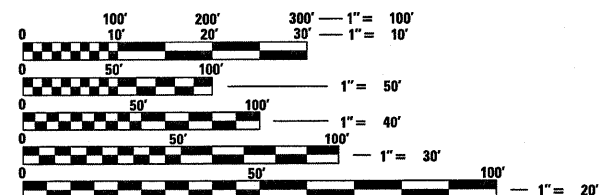
STATE OF ILLINOIS  
DEPARTMENT OF TRANSPORTATION  
DIVISION OF HIGHWAYS

SUBMITTED DEC 7 20 09  
Maureen Ryan  
DEPUTY DIRECTOR OF HIGHWAYS, REGION ENGINEER

January 09 20 10  
Scott E. Stettin  
AREA ENGINEER OF DESIGN AND ENVIRONMENT

January 09 20 10  
Christine M. Roedel  
DIRECTOR OF HIGHWAYS, CHIEF ENGINEER

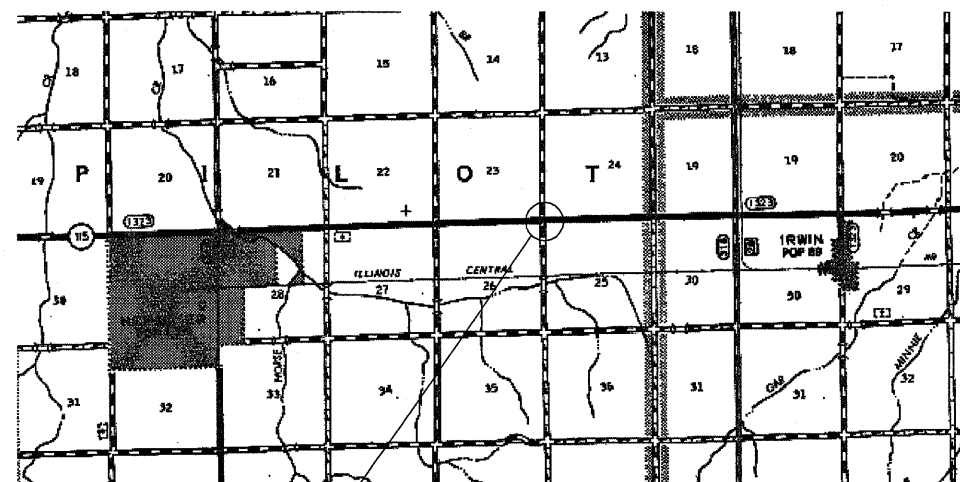
PRINTED BY THE AUTHORITY  
OF THE STATE OF ILLINOIS



FULL SIZE PLANS HAVE BEEN PREPARED USING STANDARD ENGINEERING SCALES. REDUCED SIZED PLANS WILL NOT CONFORM TO STANDARD SCALES. IN MAKING MEASUREMENTS ON REDUCED PLANS, THE ABOVE SCALES MAY BE USED.

J.U.L.I.E.  
JOINT UTILITY LOCATION INFORMATION FOR EXCAVATION  
1-800-892-0123  
OR 811

PROJECT ENGINEER: JOE KANNEL  
UNIT CHIEF: PATRICK BRABOY  
TOWNSHIP: PILOT  
CONTRACT NO. 66986



PROJECT LOCATION  
EXIST SN 046-2523  
PROP SN 046-2553

GROSS LENGTH = NET LENGTH = 150 FT. = 0.03 MILE