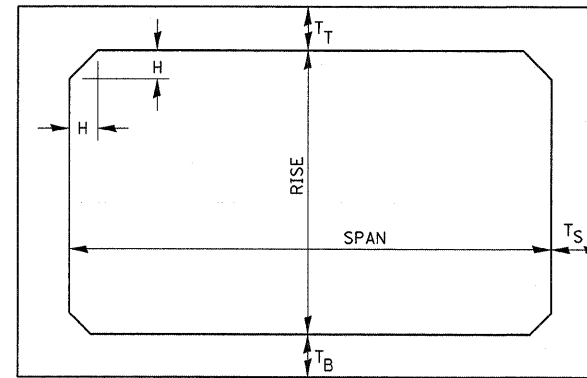


**ELEVATION**



NOTE: THE HAUNCH DIMENSION H, IS EQUAL TO THE WALL THICKNESS T<sub>S</sub>.

**TYPICAL BOX SECTION**

SPAN, FEET	T <sub>T</sub> , INCHES		T <sub>B</sub> , INCHES		T <sub>S</sub> , INCHES	
	M 259	M 273	M 259	M 273	M 259	M 273
3	4	7	4	6	4	4
4	5	7½	5	6	5	5
5	6	8	6	7	6	6
6	7	8	7	7	7	7
7	8	8	8	8	8	8
8	8	8	8	8	8	8
9	9	9	9	9	9	9
10	10	10	10	10	10	10
11	11	11	11	11	11	11
12	12	12	12	12	12	12

**TYPICAL THICKNESSES**

**GENERAL NOTES:**

MINIMUM COVER FOR BOX  
CULVERTS SHALL BE 6".

FILE NAME = c:\pw_work\p\dot\braboypc\d0155828\036	USER NAME = braboypc	DESIGNED -	REVISED -	<b>STATE OF ILLINOIS DEPARTMENT OF TRANSPORTATION</b>	<b>PRECAST CONCRETE BOX SECTION</b>	F.A.S. RTE. 1323	SECTION (102)	COUNTY KANKAKEE	TOTAL SHEETS 11	SHEET NO. 9	
	PLOT SCALE = 20.0000' / IN.	DRAWN -	REVISED -			SCALE:	SHEET NO. OF SHEETS	STA. TO STA.	FED. ROAD DIST. NO.	ILLINOIS FED. AID PROJECT	CONTRACT NO. 66986
	PLOT DATE = Dec 05, 2009 - 04:01:21 PM	CHECKED -	REVISED -								