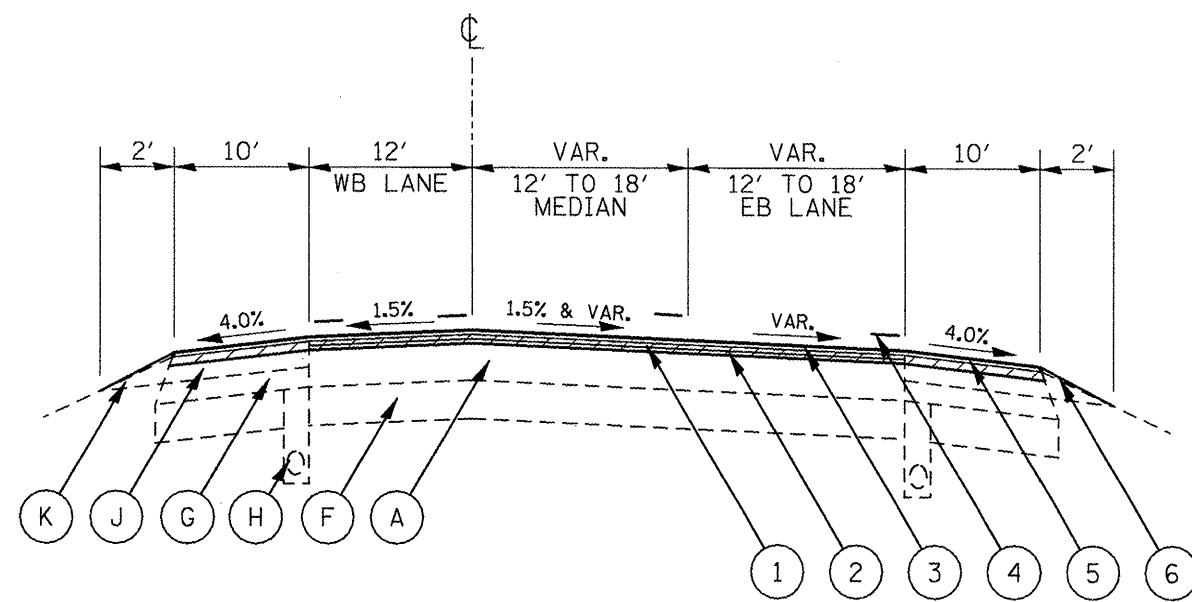


STA. 216+60.15 TO STA. 222+47.19

LEGEND - PROPOSED

- ① HMA SURFACE REMOVAL, 2"
- ② POLYMERIZED LEVELING BINDER (MM), IL-4.75, N50 (3/4")
- ③ POLYMERIZED HMA SURFACE COURSE, MIX "D", N50 (1 1/2")
- ④ URETHANE PAVEMENT MARKING
- ⑤ PREFORMED PLASTIC PVMT MARKING, TY B - LINE 6" (WHITE SKIP DASH)
- ⑥ HMA SHOULDERS
- ⑦ AGGREGATE SHOULDER, TYPE B



STA. 222+47.19 TO STA. 228+97.77 (BK)

LEGEND - EXISTING

- Ⓐ HMA PVMT (FULL-DEPTH), 14 1/4"
- Ⓑ HMA PVMT (FULL-DEPTH), 13"
- Ⓒ PCC BASE CSE, VAR.
- Ⓓ HMA SURFACE CSE, 1 1/2" AND VAR.
- Ⓔ HMA BASE CSE, 8" OR 10"
- Ⓕ LIME MODIFIED SUBGRADE, 12"
- Ⓖ SUB-BASE GRAN. MAT. TY C, VAR.
- Ⓗ PIPE UNDERDRAIN, 4"
- Ⓘ CONCRETE MEDIAN TY M-4
- Ⓝ HMA SHOULDER, 8"
- Ⓚ AGGREGATE SHOULDER, TY B, VAR.
- Ⓛ GUARDRAIL AGG. EROSION CONTROL OR EROSION CONTROL CURB