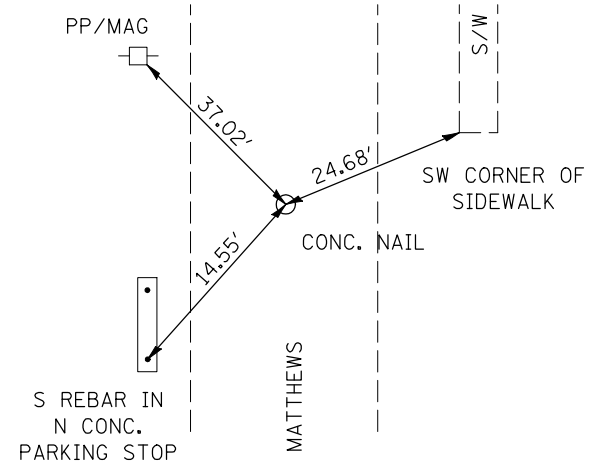
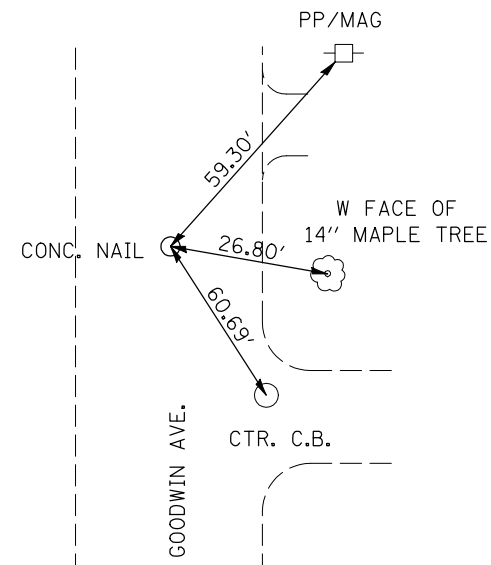


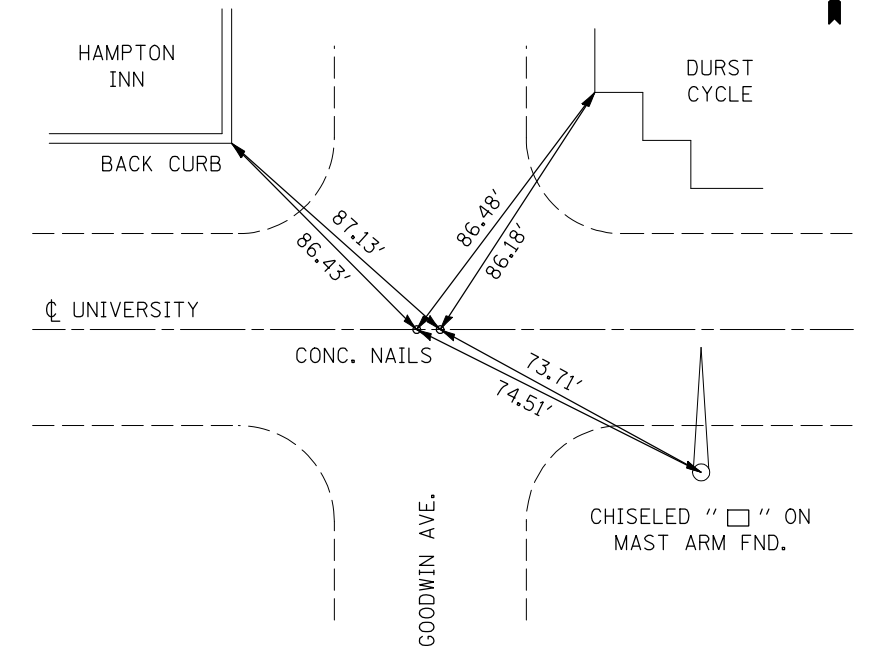
**P.O.T. N. MATTHEWS AVE.
STA. 17 + 65.97**



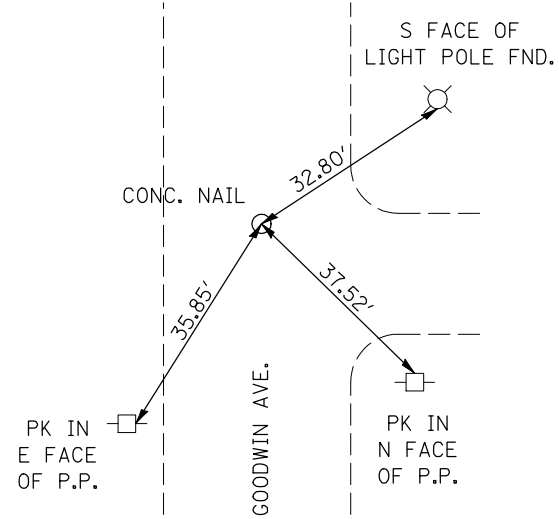
**P.O.T. S. GOODWIN AVE.
STA. 17 + 21.82**



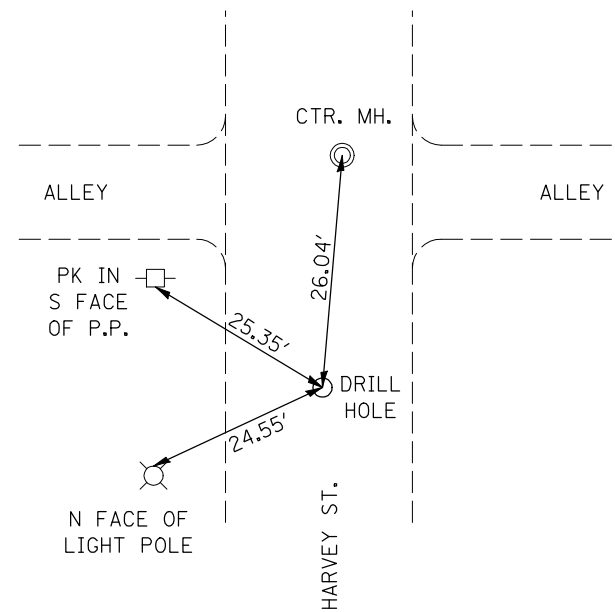
**INT. GOODWIN AVE.
STA. 20 + 00**



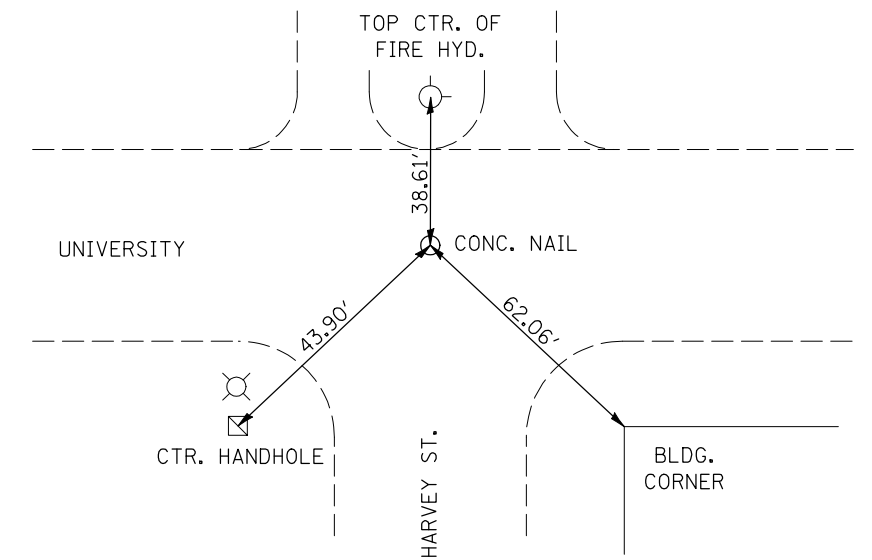
**P.O.T. N. GOODWIN AVE.
STA. 22 + 00**



**P.O.T. S. HARVEY ST.
STA. 23 + 00**



**INT. HARVEY ST.
STA. 25 + 00**



FILE NAME =	USER NAME = bucklesjj	DESIGNED -	REVISED -
et:\pw\work\PWIDOT\BUCKLESJJ\d0141682\0570121-shr-ATB.dgn		DRAWN -	REVISED -
	PLOT SCALE = 40.0000' / IN.	CHECKED -	REVISED -
	PLOT DATE = 12/11/2009	DATE -	REVISED -

**STATE OF ILLINOIS
DEPARTMENT OF TRANSPORTATION**

SIDEROAD TIE POINTS

SCALE: SHEET NO. OF SHEETS STA. TO STA.

F.A.P. RTE.	SECTION	COUNTY	TOTAL SHEETS	SHEET NO.
808	(28Z)RS-5	Champaign	59	17
CONTRACT NO.			70121	
ILLINOIS FED. AID PROJECT				