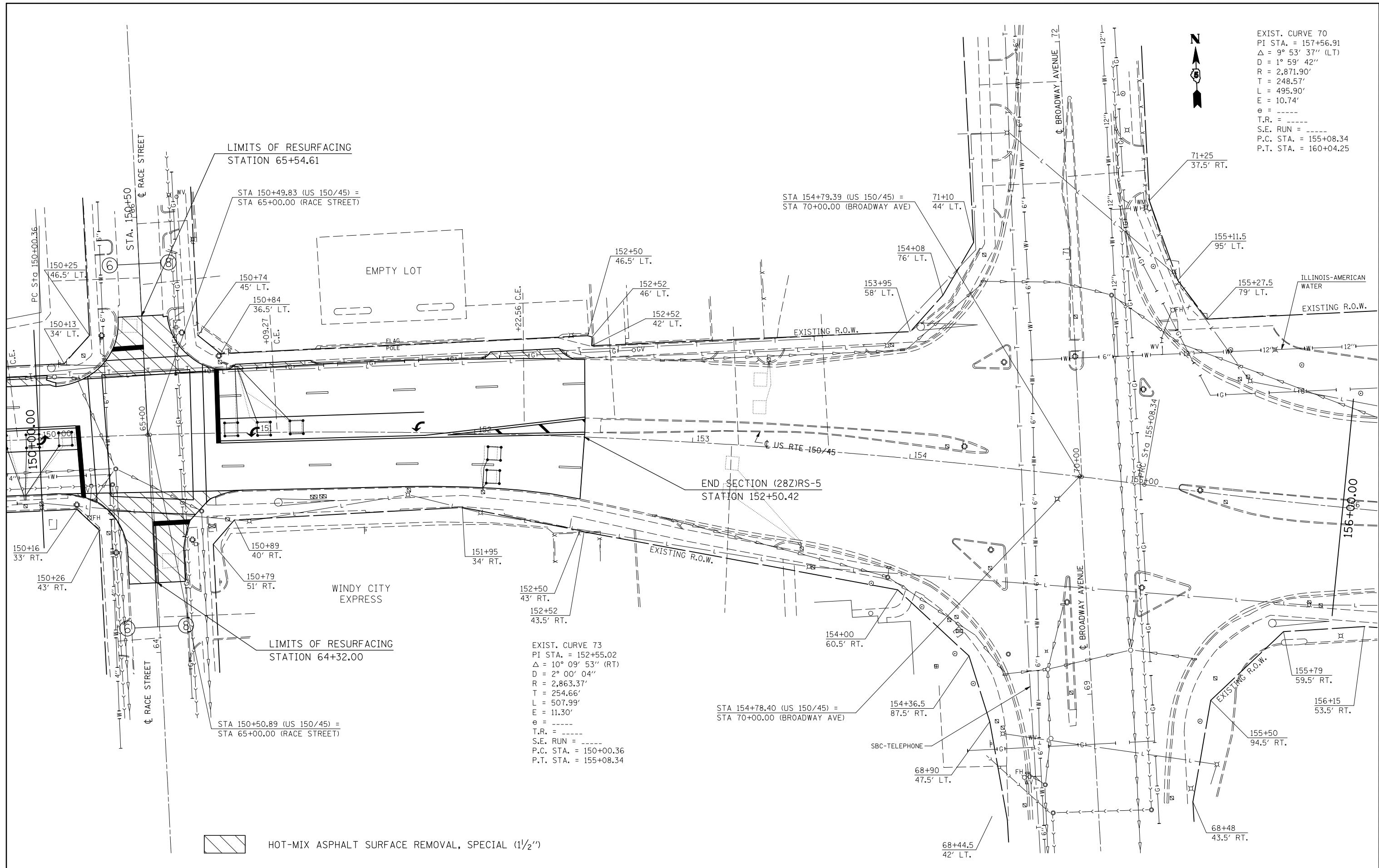




EXIST. CURVE 70
 PI STA. = 157+56.91
 $\Delta = 9^\circ 53' 37''$ (LT)
 $D = 1^\circ 59' 42''$
 $R = 2,871.90'$
 $T = 248.57'$
 $L = 495.90'$
 $E = 10.74'$
 $e = \text{-----}$
 $T.R. = \text{-----}$
 $S.E. \text{ RUN} = \text{-----}$
 $P.C. \text{ STA.} = 155+08.34$
 $P.T. \text{ STA.} = 160+04.25$



EXIST. CURVE 73
 PI STA. = 152+55.02
 $\Delta = 10^\circ 09' 53''$ (RT)
 $D = 2^\circ 00' 04''$
 $R = 2,863.37'$
 $T = 254.66'$
 $L = 507.99'$
 $E = 11.30'$
 $e = \text{-----}$
 $T.R. = \text{-----}$
 $S.E. \text{ RUN} = \text{-----}$
 $P.C. \text{ STA.} = 150+00.36$
 $P.T. \text{ STA.} = 155+08.34$

HOT-MIX ASPHALT SURFACE REMOVAL, SPECIAL (1/2")

FILE NAME =	USER NAME = bucklesjj	DESIGNED -	REVISED -
et:\pw\work\PWIDOT\BUCKLESJJ\d0141682\0570121-shr-plan1.dgn		DRAWN -	REVISED -
PLOT SCALE = 40.0000' / IN.		CHECKED -	REVISED -
PLOT DATE = 12/11/2009		DATE -	REVISED -

**STATE OF ILLINOIS
 DEPARTMENT OF TRANSPORTATION**

SCALE:		SHEET NO. OF SHEETS		STA. 150+00 TO STA. 156+00	
				PLAN SHEET	

F.A.P. RTE.	SECTION	COUNTY	TOTAL SHEETS	SHEET NO.
808	(28Z)RS-5	Champaign	59	40
CONTRACT NO. 70121			ILLINOIS FED. AID PROJECT	