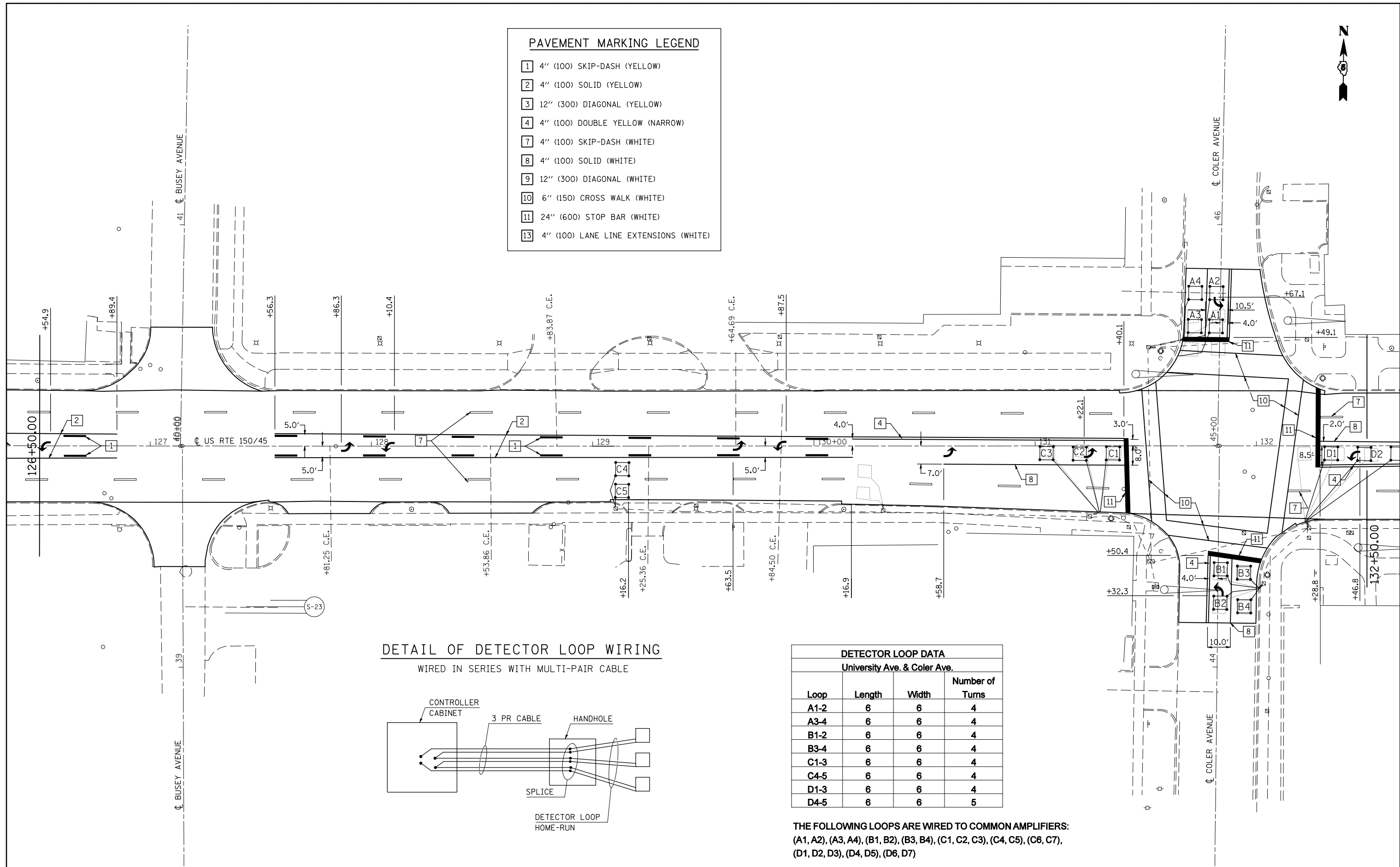


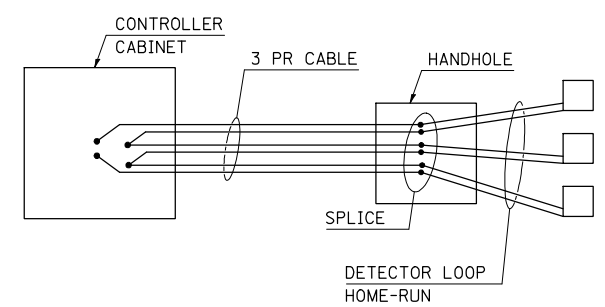


**PAVEMENT MARKING LEGEND**

1	4" (100) SKIP-DASH (YELLOW)
2	4" (100) SOLID (YELLOW)
3	12" (300) DIAGONAL (YELLOW)
4	4" (100) DOUBLE YELLOW (NARROW)
7	4" (100) SKIP-DASH (WHITE)
8	4" (100) SOLID (WHITE)
9	12" (300) DIAGONAL (WHITE)
10	6" (150) CROSS WALK (WHITE)
11	24" (600) STOP BAR (WHITE)
13	4" (100) LANE LINE EXTENSIONS (WHITE)



**DETAIL OF DETECTOR LOOP WIRING**  
WIRED IN SERIES WITH MULTI-PAIR CABLE



DETECTOR LOOP DATA			
University Ave. & Coler Ave.			
Loop	Length	Width	Number of Turns
A1-2	6	6	4
A3-4	6	6	4
B1-2	6	6	4
B3-4	6	6	4
C1-3	6	6	4
C4-5	6	6	4
D1-3	6	6	4
D4-5	6	6	5

THE FOLLOWING LOOPS ARE WIRED TO COMMON AMPLIFIERS:  
(A1, A2), (A3, A4), (B1, B2), (B3, B4), (C1, C2, C3), (C4, C5), (C6, C7),  
(D1, D2, D3), (D4, D5), (D6, D7)