

F.A.P. RTE.	SECTION	COUNTY	TOTAL SHEETS	SHEET NO.
323	(143BR)BR	DOUGLAS	68	1
ILLINOIS			CONTRACT NO. 70223	

**STATE OF ILLINOIS**  
**DEPARTMENT OF TRANSPORTATION**  
**DIVISION OF HIGHWAYS**

**PROPOSED**  
**HIGHWAY PLANS**

**FAP ROUTE 323 (US ROUTE 36)**  
**SECTION (143BR)BR**

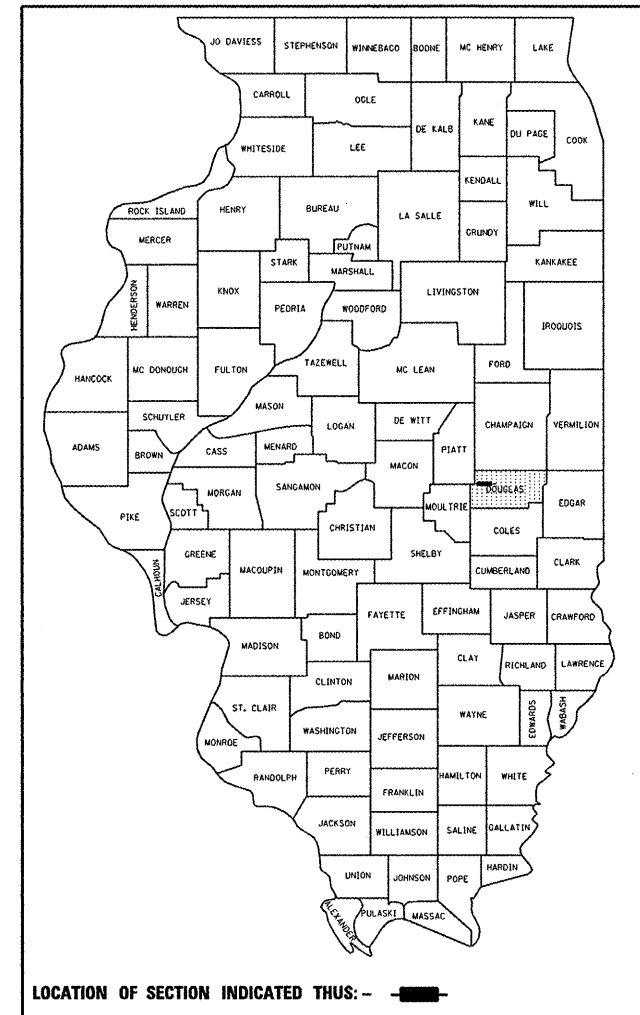
**BRIDGE REPLACEMENT**  
**DOUGLAS COUNTY**

C-95-038-02

**BEAR CREEK 0.5 MILES EAST OF ATWOOD**

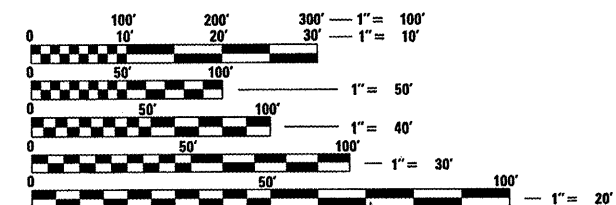
FOR INDEX OF SHEETS, SEE SHEET NO. 2  
FOR SUMMARY OF QUANTITIES, SEE SHEET NO. 5

D-95-022-02



**CURRENT ADT**  
F. A. P. 323 (US 36) = 4450 (2008)  
F. A. P. 323 (US 36) = 4700 (2028)

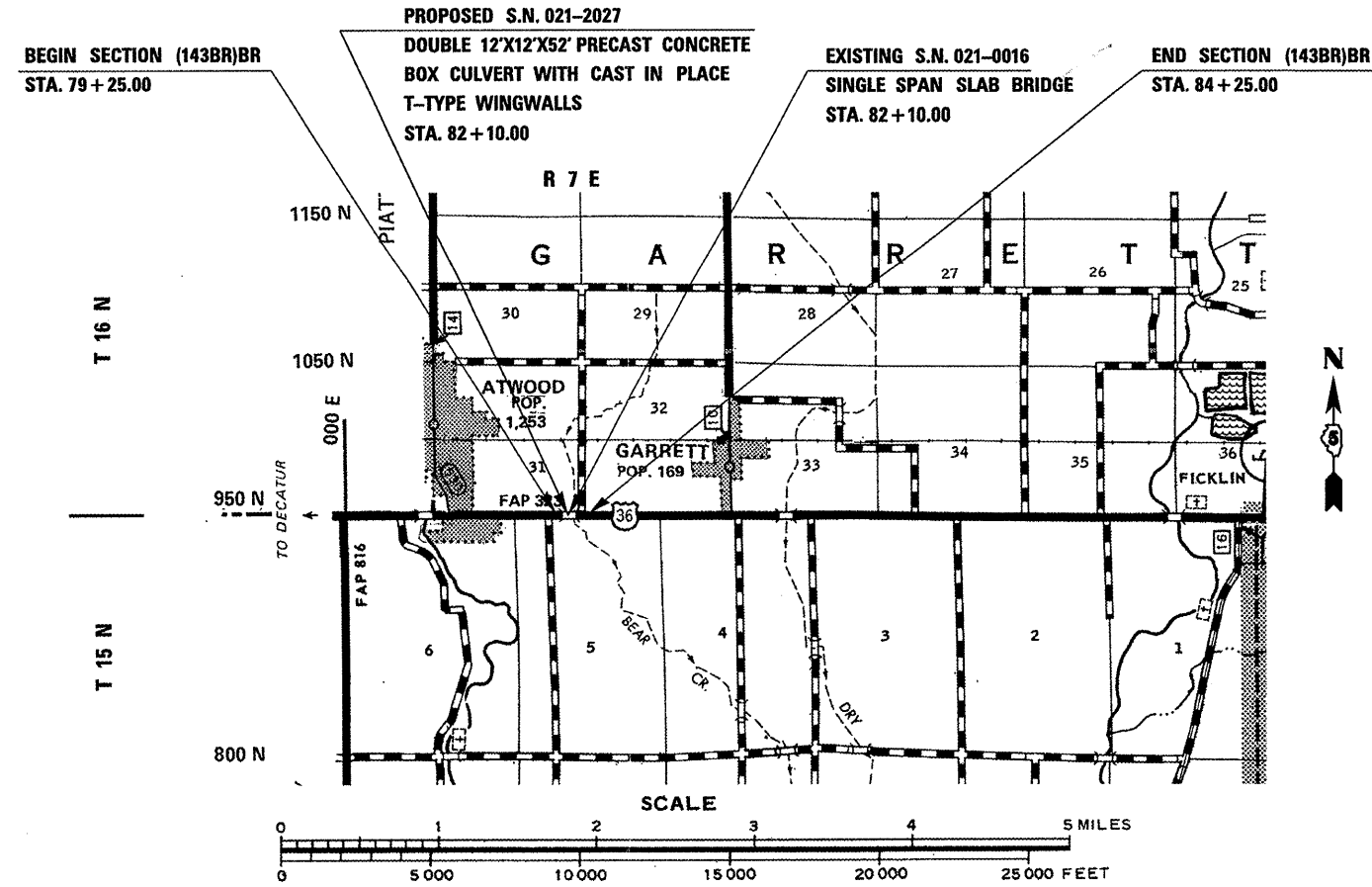
**DESIGN DESIGNATION**  
N/A



FULL SIZE PLANS HAVE BEEN PREPARED USING STANDARD ENGINEERING SCALES. REDUCED SIZED PLANS WILL NOT CONFORM TO STANDARD SCALES. IN MAKING MEASUREMENTS ON REDUCED PLANS, THE ABOVE SCALES MAY BE USED.

J.U.L.I.E.  
JOINT UTILITY LOCATION INFORMATION FOR EXCAVATION  
1-800-892-0123  
OR 811  
GARRETT TOWNSHIP

**PROJECT ENGINEER: NANCY FASIG**  
**SQUAD LEADER: BRIAN J. HOGAN**  
**DESIGNER: ALEX KEDAS**  
(217-465-4181)  
**CONTRACT NO. 70223**



GROSS LENGTH = 500.000 FT. = 0.095 MILES  
NET LENGTH = 500.000 FT. = 0.095 MILES

STATE OF ILLINOIS  
DEPARTMENT OF TRANSPORTATION  
DIVISION OF HIGHWAYS

SUBMITTED 12/16/20 09  
Jessiel E. Doremus  
DEPUTY DIRECTOR OF HIGHWAYS, REGION ENGINEER

January 09 20 10  
Scott E. Stitt P.E. Jr.  
ACTING ENGINEER OF DESIGN AND ENVIRONMENT

January 09 20 10  
Christine M. Reed  
DIRECTOR OF HIGHWAYS, CHIEF ENGINEER

**PRINTED BY THE AUTHORITY**  
**OF THE STATE OF ILLINOIS**