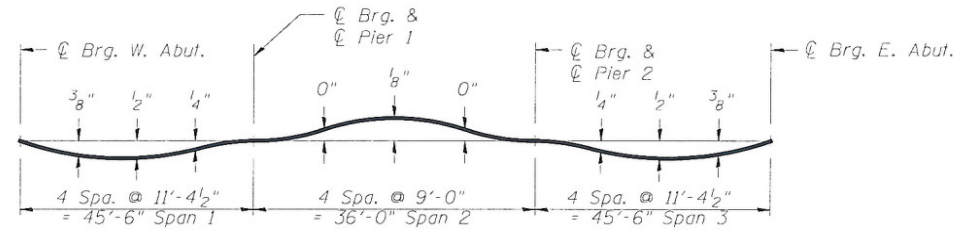


STATE OF ILLINOIS  
DEPARTMENT OF TRANSPORTATION

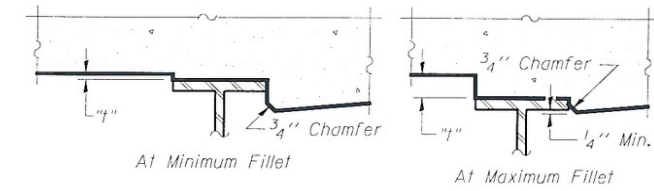


**DEAD LOAD DEFLECTION DIAGRAM**

(Includes weight of concrete only.)

Note:

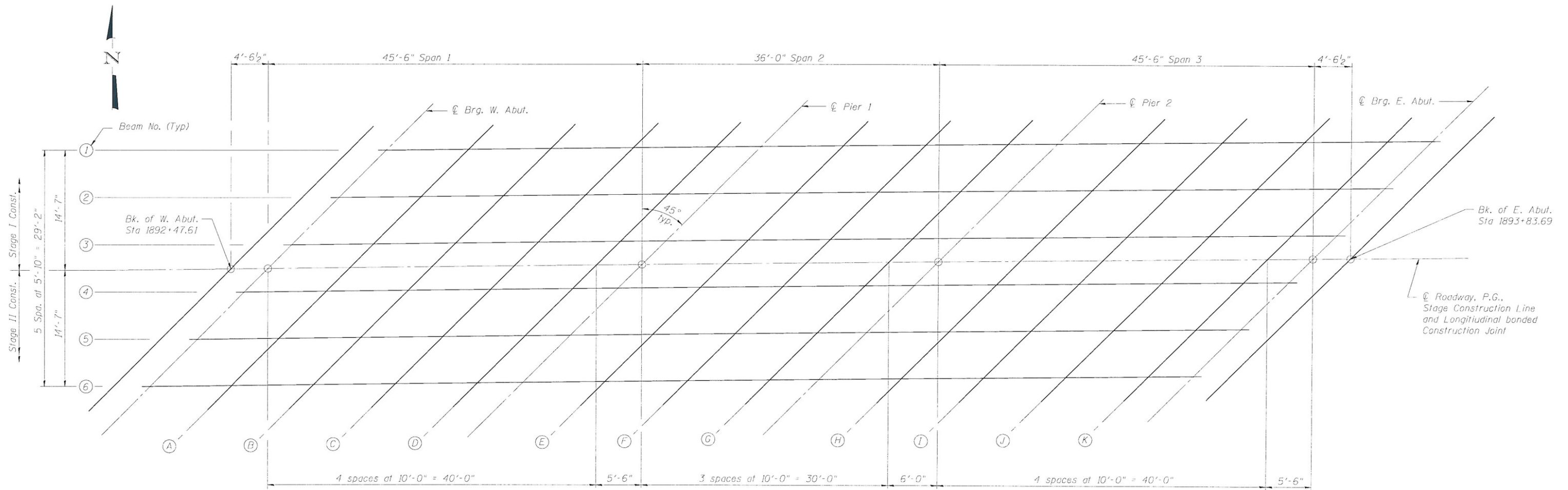
The above deflections are not to be used in the field if the engineer is working from the grade elevations adjusted for dead load deflections and grinding as shown on next sheet.



To determine "t": After all structural steel has been erected, elevations of the top flanges of the beams shall be taken at intervals shown on next sheet. These elevations subtracted from the "Theoretical Grade Elevations Adjusted for Dead Load Deflection and Grinding" shown below, minus slab thickness, equals the fillet heights "t" above top flange of beams.

The slab is to be ground after curing to achieve smoothness, but the slab is not to be ground to elevations below the "Theoretical Grade Elevations" shown below. For grinding the deck, see Special Provisions.

**FILLET HEIGHTS**



**PLAN**

**TOP OF SLAB ELEVATION PLAN  
STRUCTURE NO. 010-0283**

DESIGNED	JLG
CHECKED	CJC
DRAWN	UJ
CHECKED	JLG



SHEET NO. 5 24 SHEETS	F.A.P. RTE. 709	SECTION (105BR)BR	COUNTY CHAMPAIGN	TOTAL SHEETS 55	SHEET NO. 17
	SN 010-0283		CONTRACT NO. 70427		
FED. ROAD DIST. NO. 5 ILLINOIS FED. AID PROJECT					