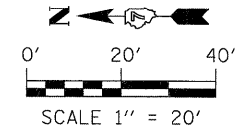
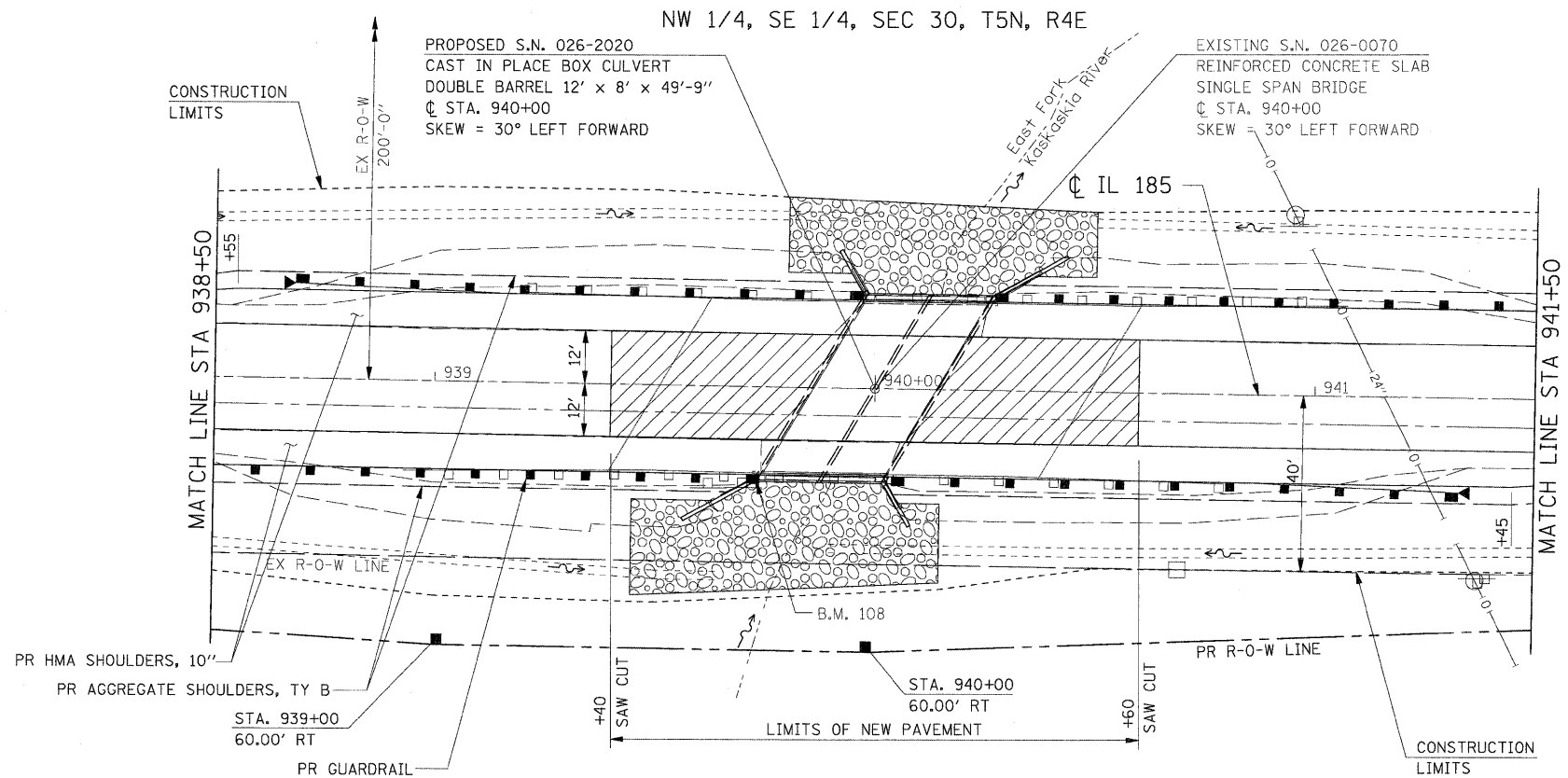


PLAN SURVEYED BY DATE
 PLOTTED BY
 NOTE BOOK NO.
 CHECKED BY
 STRUCTURE NOTATION CHG
 CADD FILE NAME

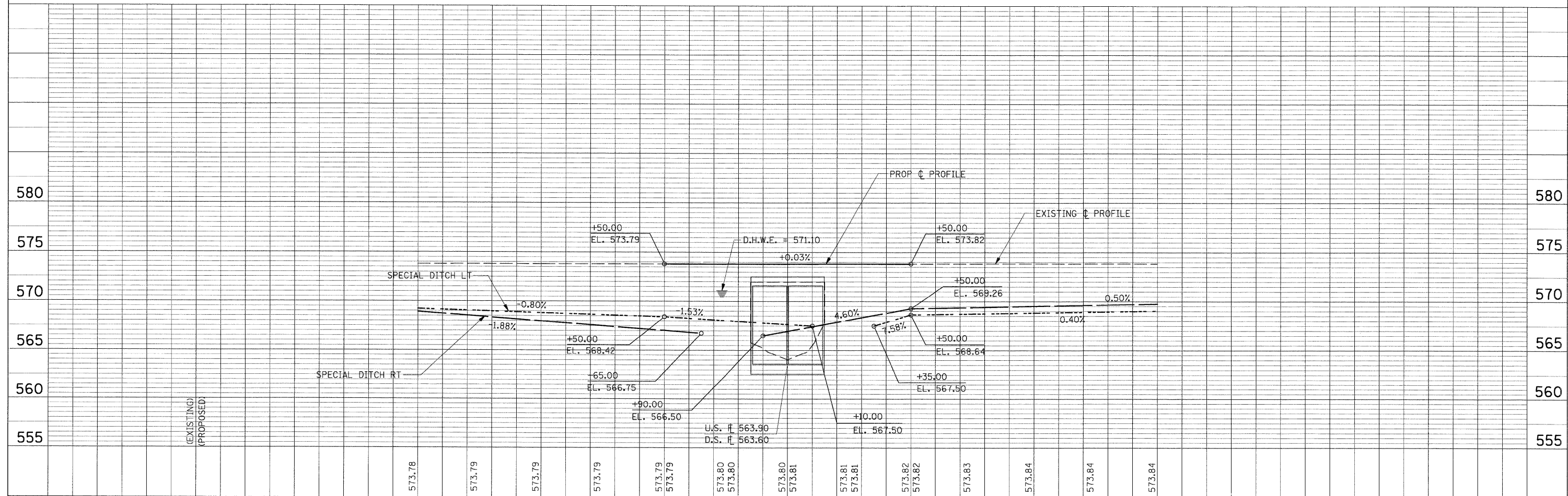
PROFILE SURVEYED BY DATE
 PLOTTED BY
 NOTE BOOK NO.
 CHECKED BY
 STRUCTURE NOTATION CHG



NE 1/4, SW 1/4, SEC 30, T5N, R4E

LEGEND

EX PAVEMENT REMOVAL



| | | | | | | | | | | |
|---|----------------------------|------------|-----------|---|---------------------------|----------------------------------|---------------------------|--------|--------------|-----------|
| FILE NAME = G:\S88026-5\CADD Sheets\0774112-sh1-PLNPR02.dgn | USER NAME = IE Consultants | DESIGNED - | REVISED - | STATE OF ILLINOIS DEPARTMENT OF TRANSPORTATION | PLAN & PROFILE | F.A. RTE. | SECTION | COUNTY | TOTAL SHEETS | SHEET NO. |
| | | DRAWN - | REVISED - | | | 114B-1(1) & 114B-1(2) | FAYETTE | 54 | 13 | |
| | | CHECKED - | REVISED - | | | F.A.P. RTE. 750, F.A.S. RTE. 719 | CONTRACT NO. 74110 | | | |
| | | DATE - | REVISED - | | | FED. ROAD DIST. NO. | ILLINOIS FED. AID PROJECT | | | |
| SCALE: SHEET NO. OF SHEETS STA. TO STA. | | | | | | | | | | |