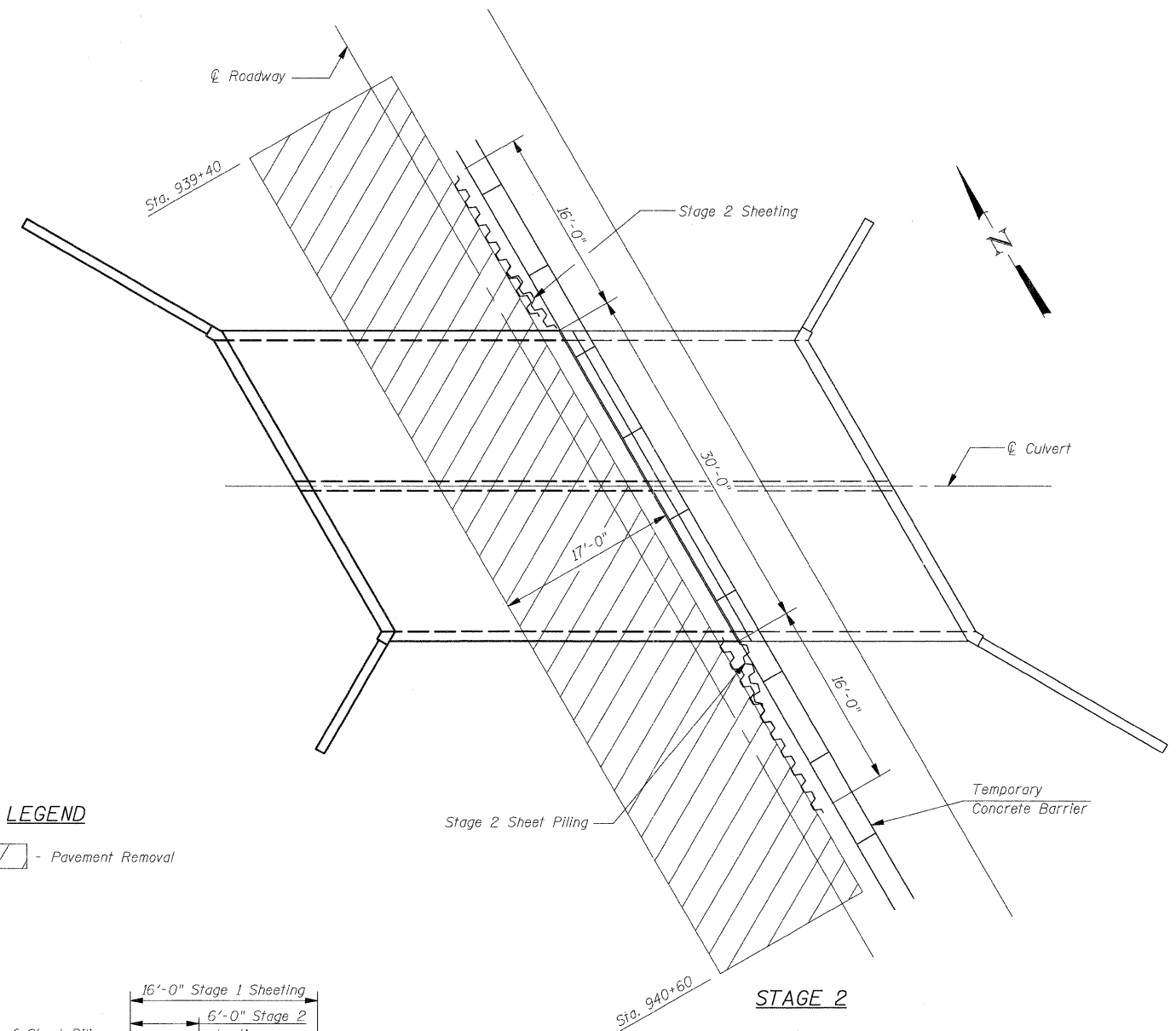
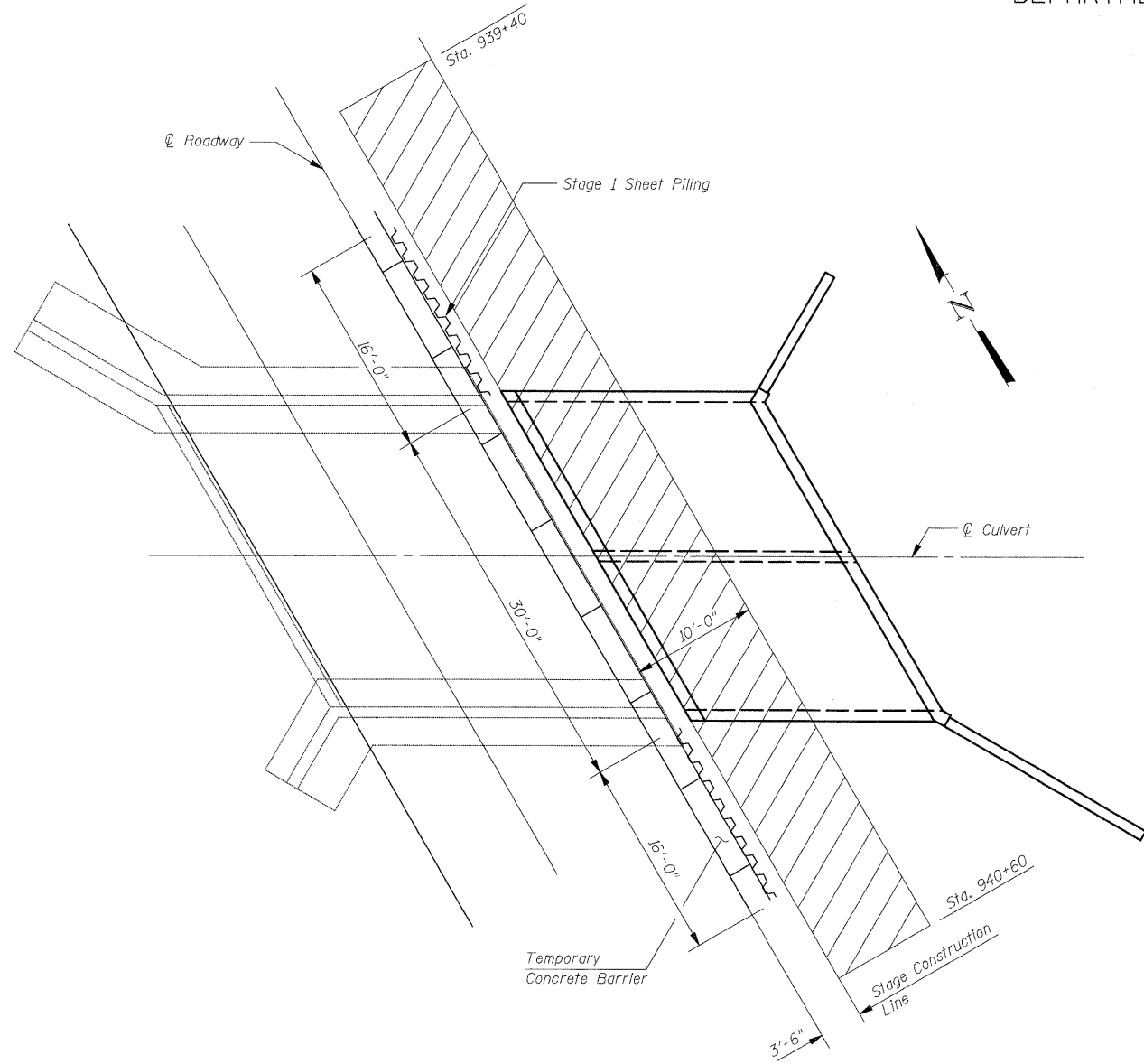


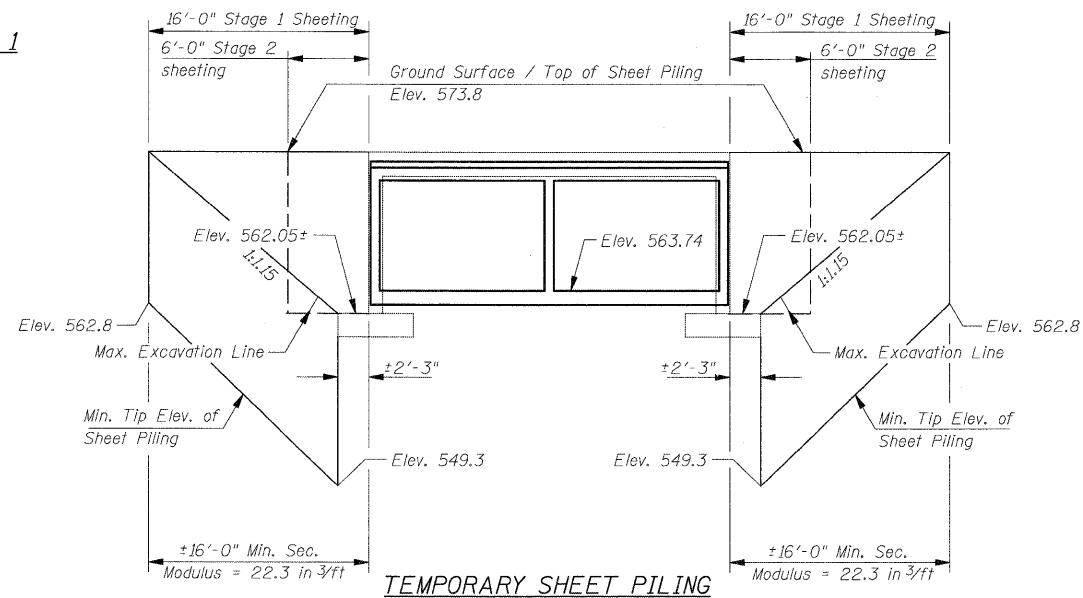
STATE OF ILLINOIS  
DEPARTMENT OF TRANSPORTATION



LEGEND

- Pavement Removal

STAGE 1



STAGE 2

Notes:  
If the Contractor chooses to alter the temporary cantilevered sheet piling design requirements shown on the plans, a design submittal including plan details and calculations will be required for review and acceptance by the Engineer.  
The Contractor shall connect the first sheet to the existing abutment wall to ensure stability of sheets driven to the top of the existing footing. This connection shall be reviewed and accepted by the Engineer and included in the cost for Temporary Sheet Piling.

STAGE CONSTRUCTION DETAILS  
& TEMPORARY SHEET PILING  
S.N. 026-2020

DESIGNED <i>SCD</i>
CHECKED <i>DRB</i>
DRAWN <i>THW</i>
CHECKED -



IE CONSULTANTS, INC  
6420 SOUTH SIXTH STREET  
SPRINGFIELD, ILLINOIS 62712  
TEL. (217) 529-8027  
FAX (217) 529-4543  
IESPRINGFIELD@IE-CONSULTANTS.COM  
WWW.IE-CONSULTANTS.COM

SHEET NO. 2	F.A. RTE.	SECTION	COUNTY	TOTAL SHEETS	SHEET NO.
OF 9 SHEETS	*	114B-1(1) & 114B-1(2)	FAYETTE	54	20
* F.A.P. RTE. 750, F.A.S. RTE. 719 CONTRACT NO. 74110					
FED. ROAD DIST. NO. _ ILLINOIS FED. AID PROJECT					