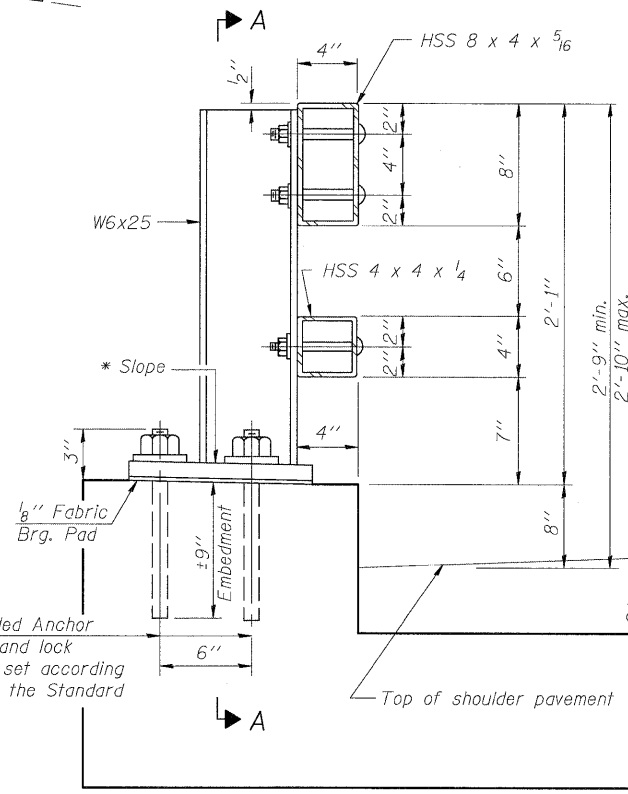
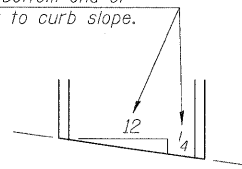
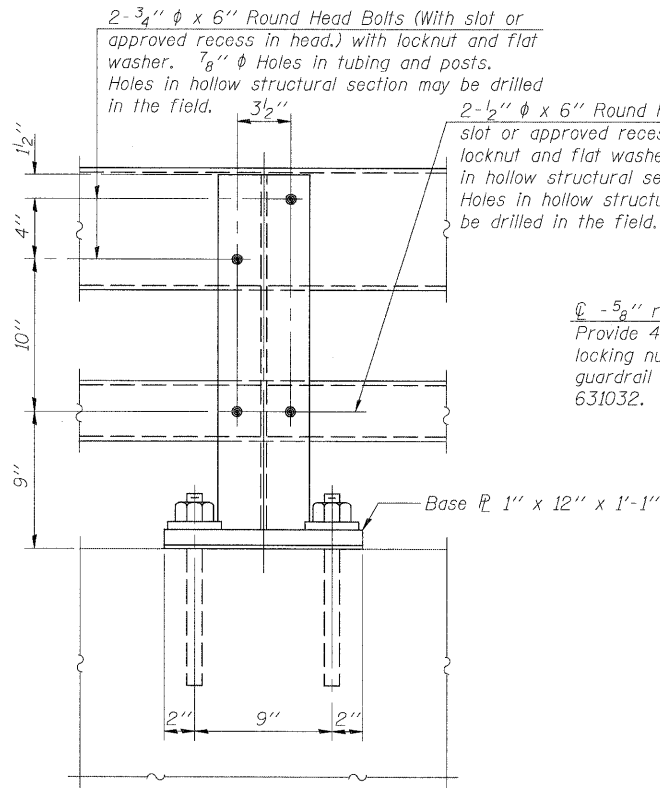


STATE OF ILLINOIS
DEPARTMENT OF TRANSPORTATION

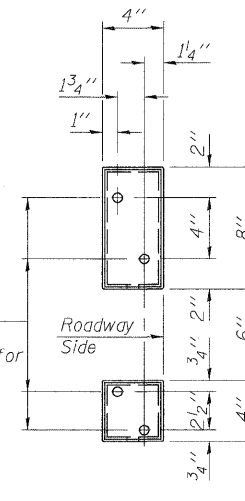
* Cut bottom end of post to curb slope.



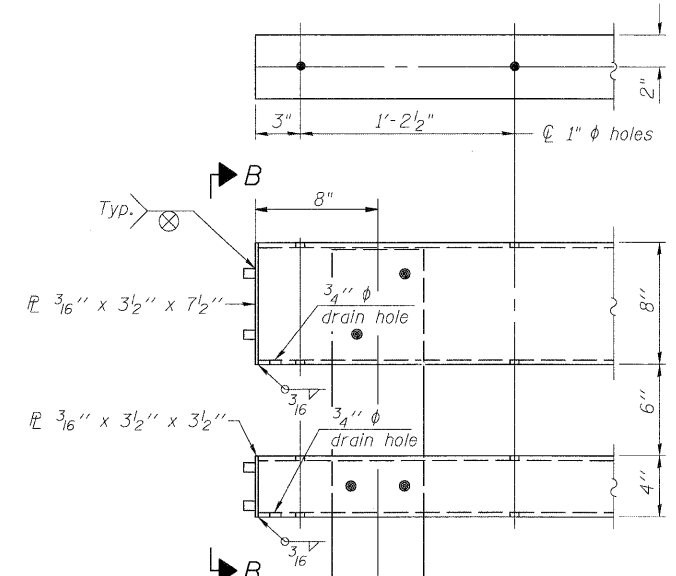
SECTION AT RAIL POST



SECTION A-A



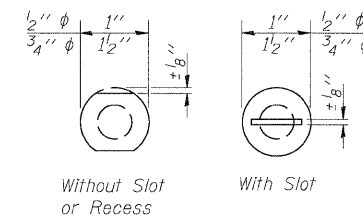
VIEW B-B



END OF RAIL DETAILS

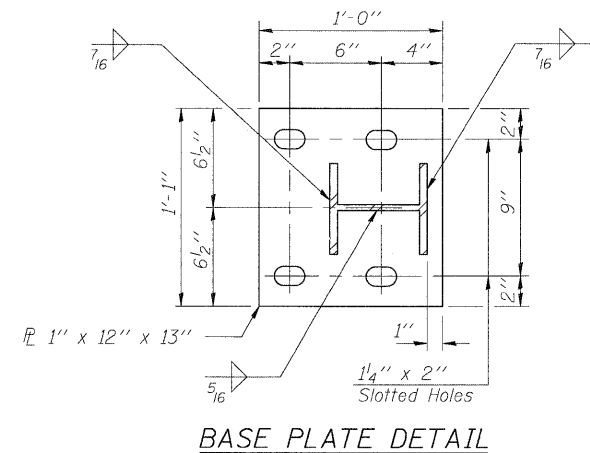
Notes:

- All field drilled holes shall be coated with an approved zinc rich paint before erection.
- Posts shall not be located closer than 1'-3" to an existing bridge expansion joint or end of bridge.
- Steel Bridge Rail expansion joint shall be provided between any two (2) posts which span a bridge expansion joint. Bolts located at expansion joint shall be provided with locknuts and shall be tightened only to a point that will allow ralling movement.
- Provide one 1/8" and two 1/16" steel shims for 25% of the posts. Shims shall be similar to base plates in size and holes.
- All steel rail elements shall be galvanized according to Article 509.05 of the Standard Specifications.

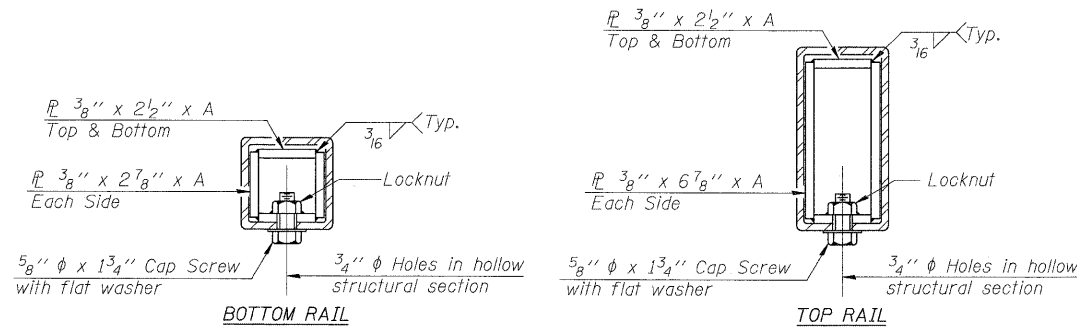


VIEW C-C

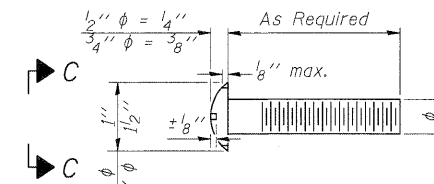
4- 1" ϕ H.S. Threaded Anchor Rods with hex nuts and lock washers, drilled and set according to Article 509.06 of the Standard Specifications.



BASE PLATE DETAIL



SECTIONS AT RAIL SPLICE



DETAIL OF 1/2" ϕ & 3/4" ϕ ROUND HEAD BOLTS

SPLICE DIMENSIONS

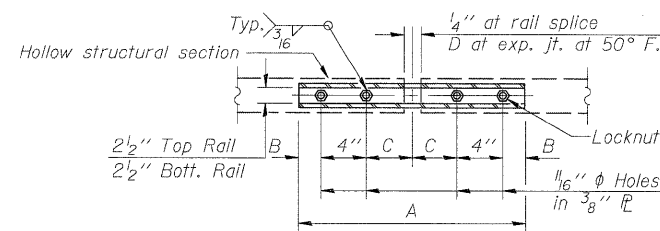
T	D	A	B	C	E
$\leq 4"$	2 1/2"	1'-8"	2"	4"	2 1/2"
$> 4" \leq 6 1/2"$	3 3/4"	2'-0"	2 1/2"	5 1/2"	3 1/2"
$> 6 1/2" \leq 9"$	5"	2'-4"	3 1/2"	6 1/2"	9"
$> 9" \leq 13"$	7"	2'-10"	4 1/2"	8 1/2"	11"
Rail Splice	4"	1'-8"	2"	4"	—

T = Total movement at expansion joint as shown on the design plans.

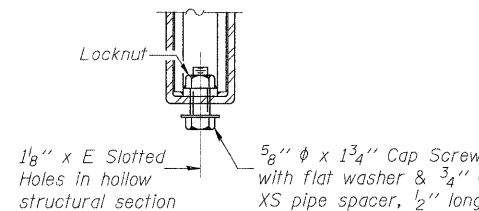
BILL OF MATERIAL

Item	Unit	Quantity
Steel Railing, Type 2399	Foot	56

See sheet 1 of 9 for post spacing.



PLAN-BOTT. SPLICE R TYPICAL



RAIL SPLICE CONNECTION AT EXPANSION JT.

DESIGNED	SCD
CHECKED	DRB
DRAWN	THW
CHECKED	-



IE CONSULTANTS, INC.
6420 SOUTH SIXTH STREET
SPRINGFIELD, ILLINOIS 62712
TEL. (217) 529-8027
FAX (217) 529-4543
IESPRINGFIELD@IE-CONSULTANTS.COM
WWW.IE-CONSULTANTS.COM

(6'-3" Maximum Post Spacing)

STEEL RAILING, TYPE 2399
S.N. 026-2020

SHEET NO. 6	F.A. RTE.	SECTION	COUNTY	TOTAL SHEETS	SHEET NO.
OF 9 SHEETS	*	114B-1(1) & 114B-1(2)	FAYETTE	54	24
	*	F.A.P. RTE. 750, F.A.S. RTE. 719	CONTRACT NO. 74110		
		FED. ROAD DIST. NO. _ ILLINOIS	FED. AID PROJECT		