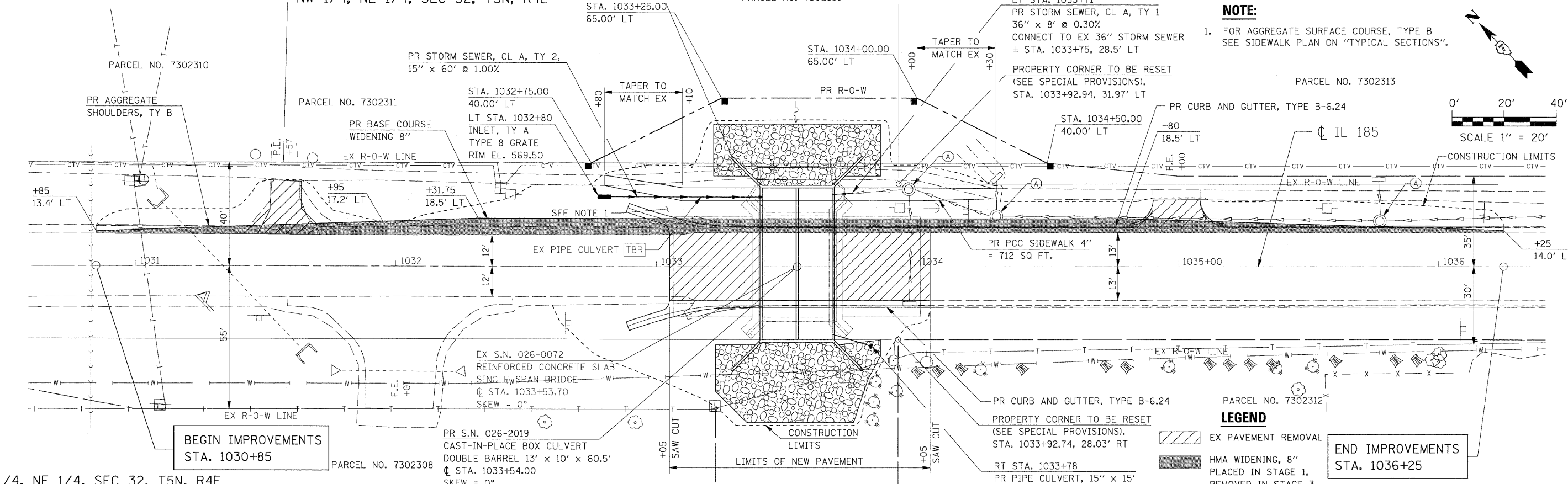
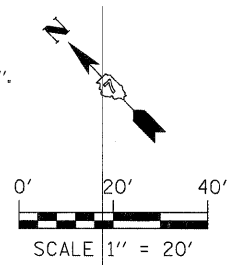


NW 1/4, NE 1/4, SEC 32, T5N, R4E

PARCEL NO. 7302310



NOTE:
1. FOR AGGREGATE SURFACE COURSE, TYPE B SEE SIDEWALK PLAN ON "TYPICAL SECTIONS".



LEGEND
 EX PAVEMENT REMOVAL
 HMA WIDENING, 8\"/>

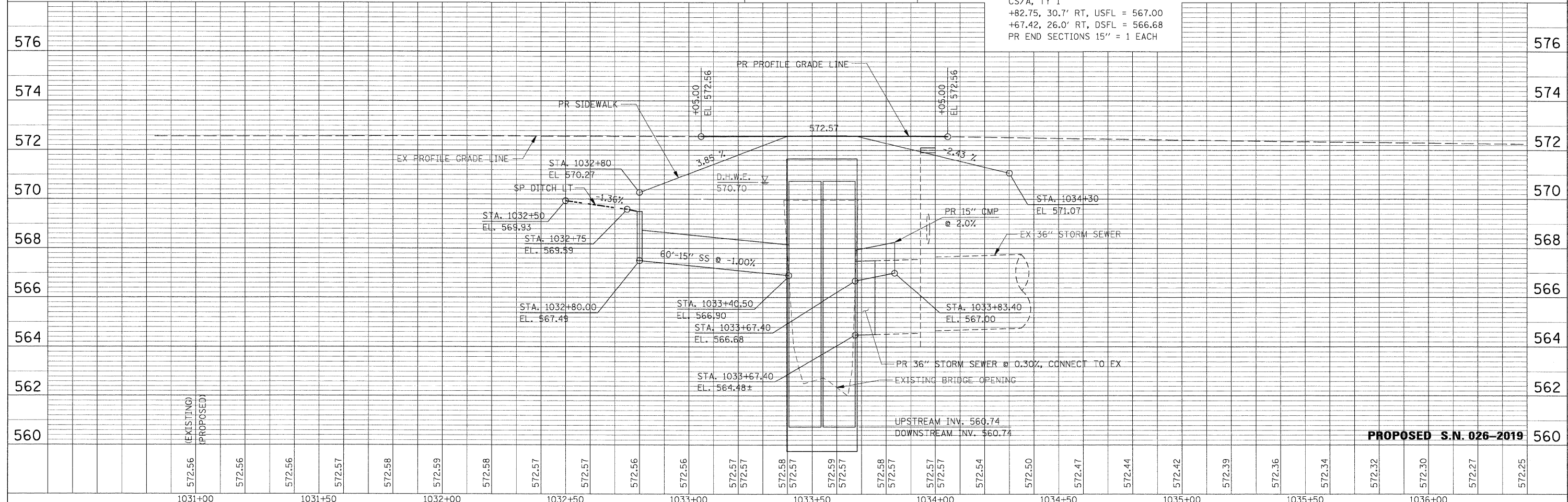
BEGIN IMPROVEMENTS
STA. 1030+85

END IMPROVEMENTS
STA. 1036+25

NW 1/4, NE 1/4, SEC 32, T5N, R4E

PLAN	SURVEYED	DATE
	PLOTTED	
	CHECKED	
	BY	
	NO.	
	DATE	

PROFILE	SURVEYED	DATE
	PLOTTED	
	CHECKED	
	BY	
	NO.	
	DATE	



FILE NAME =	USER NAME = IE Consultants	DESIGNED -	REVISED -	<p align="center">STATE OF ILLINOIS DEPARTMENT OF TRANSPORTATION</p> <p align="center">PLAN AND PROFILE STA. 1030 + 67 TO STA. 1036 + 35</p>	F.A.R.T.E.	SECTION	COUNTY	TOTAL SHEETS	SHEET NO.
Gr:\S28026-6\Cadd Sheets\0774111-shd-PlanPr-fldgn		DRAWN -	REVISED -		114B-1(1) & 114B-1(2)	FAYETTE	54	36	
PLOT SCALE = 20.0000' / IN.		CHECKED -	REVISED -		F.A.P. RTE. 750, F.A.S. RTE. 719				
PLOT DATE = 9/29/2009		DATE -	REVISED -		FED. ROAD DIST. NO. ILLINOIS FED. AID PROJECT				