

B.M. 101- Chiseled "□" on N.W. corner of Bridge on S.W. corner of headwall Sta. 1033+38: 19.4' Lt.  
Elev. 572.532

STATE OF ILLINOIS  
DEPARTMENT OF TRANSPORTATION

Existing Structure S.N. 026-0072 is a single span slab structure built in 1932 under Section 114B. The structure is 30' Bk to Bk of abutments with a 42'-2" roadway width and is constructed at a 0° skew. Both abutments are Closed abutments on spread footing. There is 4'-2" concrete rail on either side of the slab. In 2006 there was a 2.5" resurfacing with B-6.24 gutters added to the roadway. A pedestrian walkway structure is located approximately 15' North of the structure. Traffic shall be maintained using stage construction.

GENERAL NOTES

Reinforcement bars shall conform to the requirements of ASTM A 706 Gr 60. See Special Provisions.

Reinforcement bars designated (E) shall be epoxy coated.

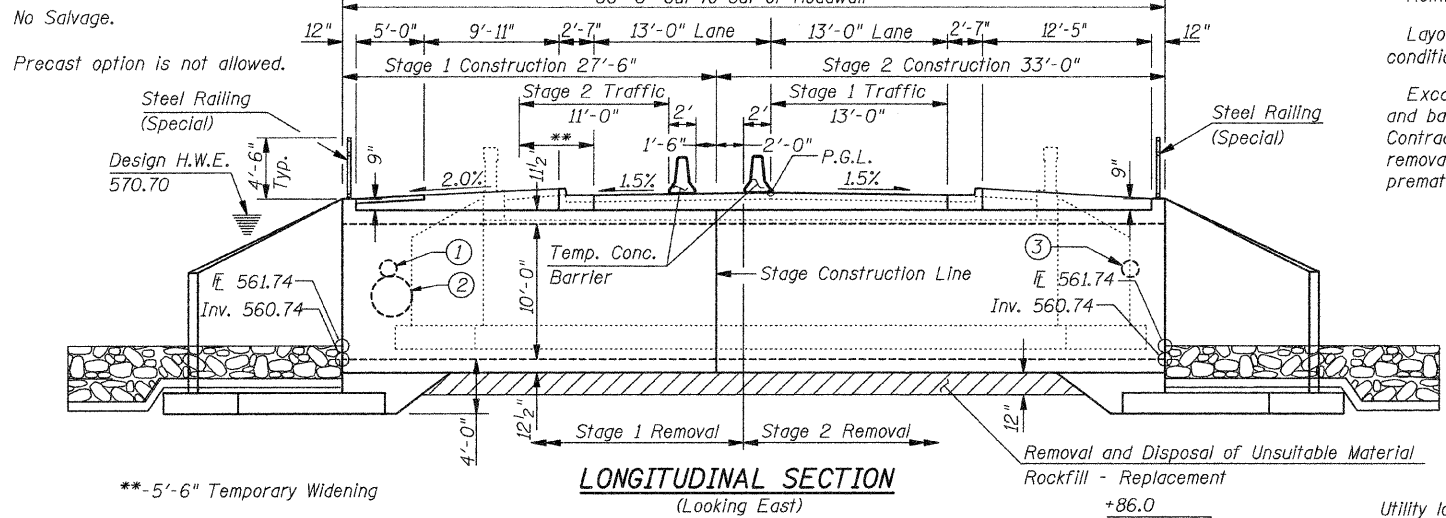
Layout of slope protection system may be varied in the field to suit ground conditions as directed by the Engineer.

Excavation behind existing abutment walls shall be performed to balance front and back soil pressure before removing the existing superstructure. The Contractor shall sawcut the upper portion of the existing abutment at the stage removal line before Stage I removal to ensure the remaining portion will not be prematurely damaged.

WATERWAY INFORMATION

Drainage Area = 3.8 SQ MI Low Grade Elev. 571.83 @ Sta. 1039+08.46

Flood	Freq. Yr.	Q C.F.S.	Opening Sq. Ft. Exist.	Opening Sq. Ft. Prop.	Nat. H.W.E.	Head - Ft. Exist.	Head - Ft. Prop.	Headwater El. Exist.	Headwater El. Prop.
Design	10	747	161	202	569.5	0.1	0.1	569.6	569.6
Base	100	1375	172	234	570.7	0.9	0.5	571.6	571.2
Overtopping Pr.	100	1375	172	234	571.3	1.0	0.6	572.3	571.9
Max. Calc.	500	1839	172	234	572.0	0.8	0.7	572.8	572.7



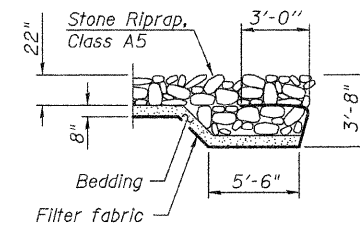
DESIGN SCOUR ELEVATION TABLE

Design Scour Elevation (ft.)	Upstream	Downstream
	556.74	556.74

STATION 1033+54.00  
BUILT 20 BY  
STATE OF ILLINOIS  
F.A.S. ROUTE 719 - SECTION 114B-1(2)  
LOADING HS-20  
STRUCTURE NO. 026-2019

NAME PLATE

See Std. 515001



SECTION A-A

PROFILE GRADE LINE

IL RTE 185

- ① Pr Storm Sewer, CL A, TY 2, 15" x 60" @ 1.00%. To pass thru Box Culvert wall @ Elev. 566.90
- ② Pr Storm Sewer, CL A, TY 1, 36" x 8" @ 0.30%. To connect to exist. Storm Sewer and pass through box culvert wall. @ Elev. 564.48±
- ③ Pr 15" Pipe culvert, 15"x15' CS/A, TY 1 To pass thru Box Culvert wall @ Elev. 566.68

APPROVED  
FOR STRUCTURAL ADEQUACY ONLY

Richard E. Anderson (TSD)  
ENGINEER OF BRIDGES AND STRUCTURES

INDEX OF SHEETS

- GENERAL PLAN & ELEVATION
- STAGE CONSTRUCTION DETAILS & TEMPORARY SHEET PILING
- STAGE CONSTRUCTION DETAILS
- STAGE 1 CULVERT DETAILS
- STAGE 2 CULVERT DETAILS
- STEEL RAILING DETAILS
- BAR SPLICER ASSEMBLY DETAILS
- TEMPORARY CONCRETE BARRIER FOR STAGE CONSTRUCTION
- SOIL BORINGS

DESIGN SPECIFICATIONS

2002 AASHTO Standard Specifications for Highway Bridges, 17th Edition

LOADING HS-20-44

Allow 50#/sq. ft. for future wearing surface.

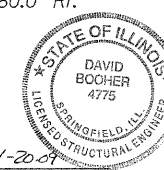
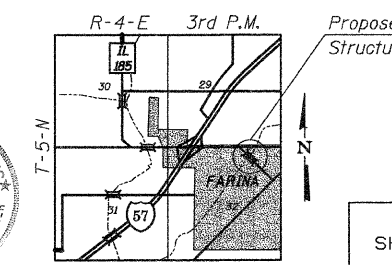
DESIGN STRESSES

FIELD UNITS

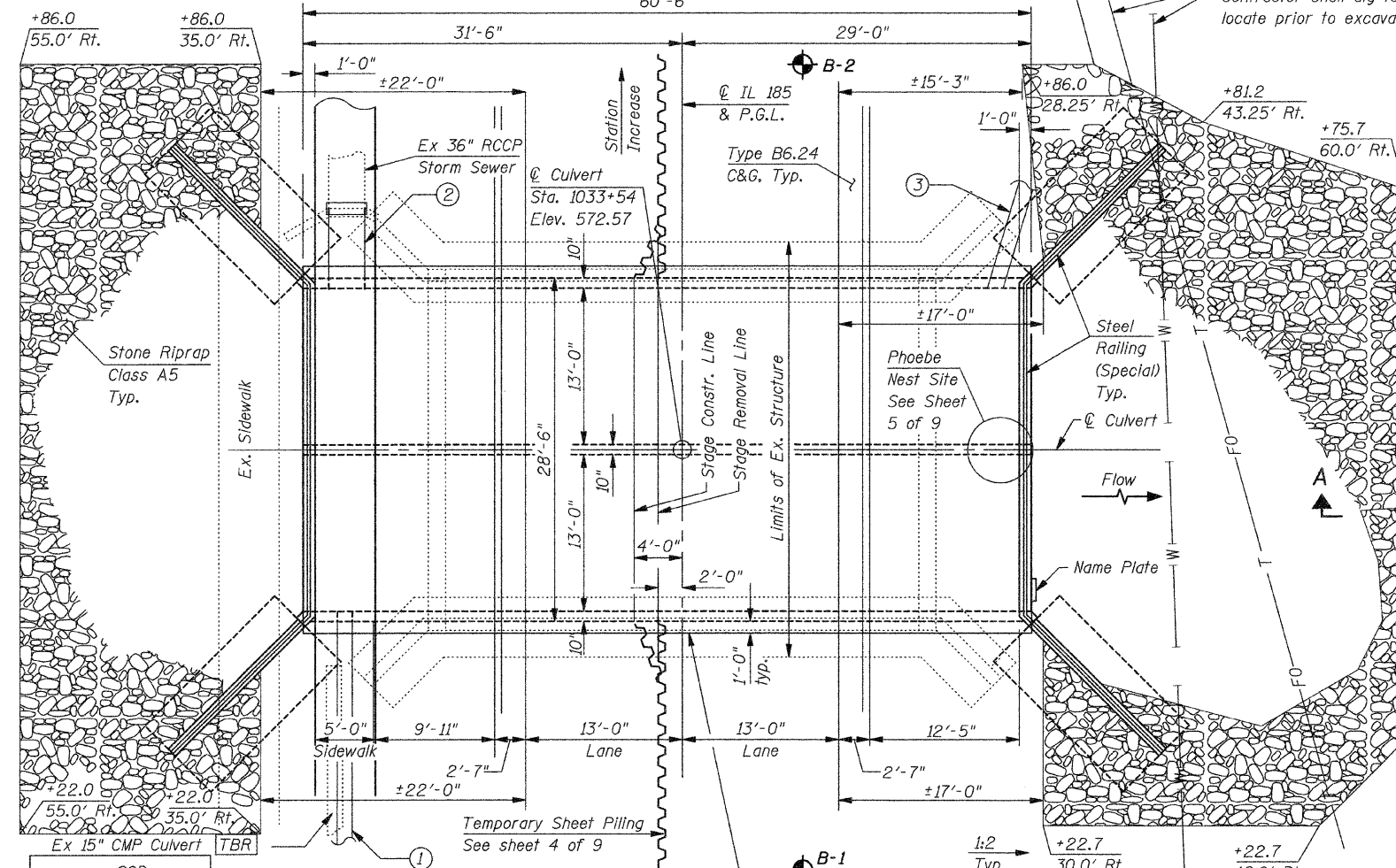
f'c = 3,500 psi  
fy = 60,000 psi (Reinforcement)

GENERAL PLAN

IL ROUTE 185 OVER STREAM  
F.A.S. RTE. 719 - SECTION 114B-1(2)  
FAYETTE COUNTY  
STA. 1033+54  
S.N. 026-2019



David Bocher, Illinois S.E. 081-004775  
Expires 11-30-2010



DESIGNED SCD  
CHECKED DRB  
DRAWN THW  
CHECKED SCD

ie consultants  
IE CONSULTANTS, INC.  
6420 SOUTH SIXTH STREET  
SPRINGFIELD, ILLINOIS 62712  
TEL. (217) 529-8027  
FAX (217) 529-4543  
IESPRINGFIELD@IE-CONSULTANTS.COM  
WWW.IE-CONSULTANTS.COM

SHEET NO.	F.A. RTE.	SECTION	COUNTY	TOTAL SHEETS	SHEET NO.
1	*	114B-1(1) & 114B-1(2)	FAYETTE	54	42
OF 9 SHEETS	*	F.A.P. RTE. 750, F.A.S. RTE. 719	CONTRACT NO. 74110		
		FED. ROAD DIST. NO.	ILLINOIS FED. AID PROJECT		