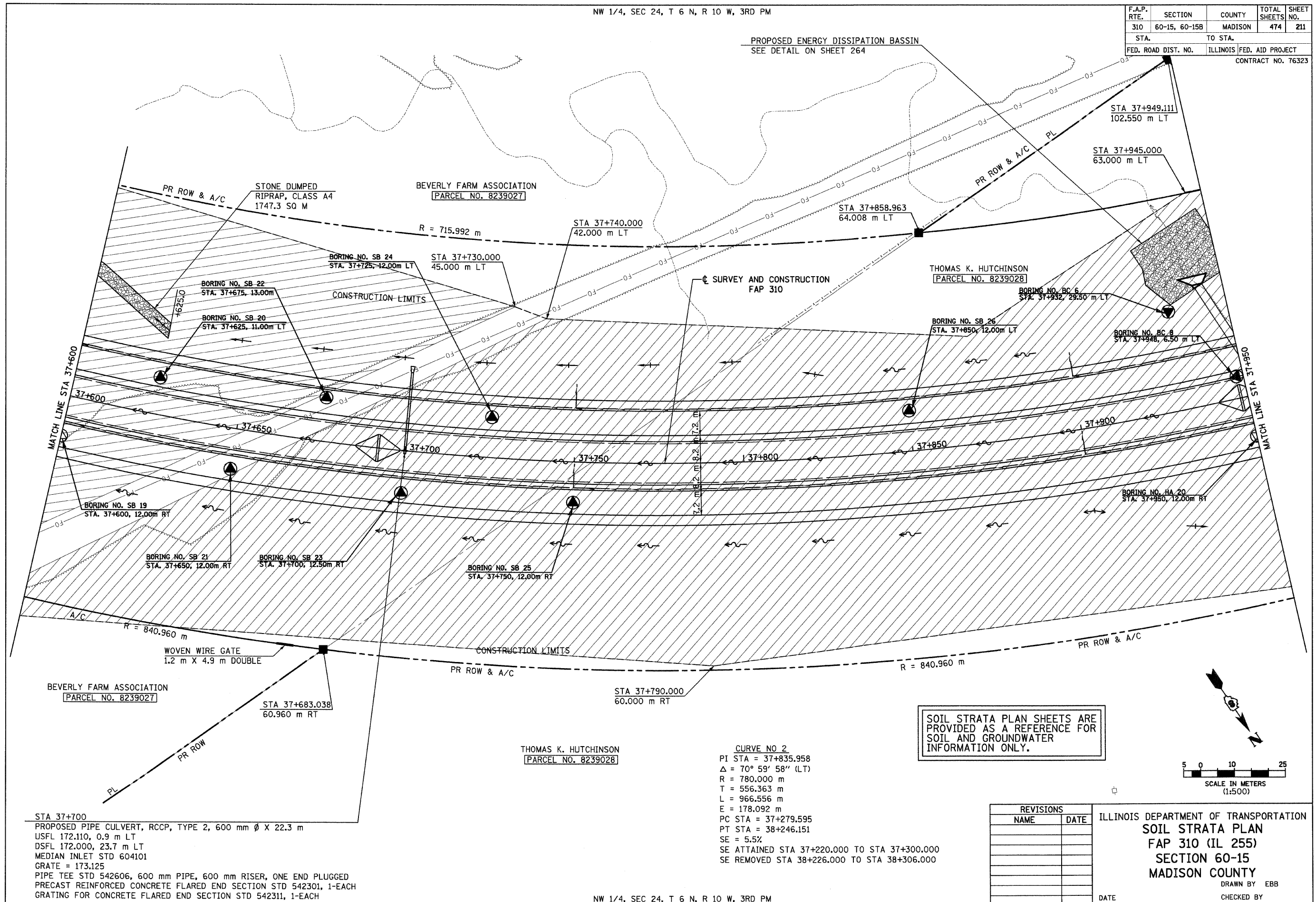


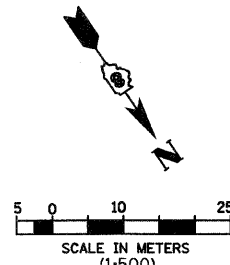
6/28/2007

NW 1/4, SEC 24, T 6 N, R 10 W, 3RD PM

| | | | | |
|---------------------|---------------|---------------------------|------------------|-----------|
| F.A.P. RTE. | SECTION | COUNTY | TOTAL SHEETS NO. | SHEET NO. |
| 310 | 60-15, 60-15B | MADISON | 474 | 211 |
| STA. | | TO STA. | | |
| FED. ROAD DIST. NO. | | ILLINOIS FED. AID PROJECT | | |
| CONTRACT NO. 76323 | | | | |



SOIL STRATA PLAN SHEETS ARE PROVIDED AS A REFERENCE FOR SOIL AND GROUNDWATER INFORMATION ONLY.



STA 37+700
 PROPOSED PIPE CULVERT, RCCP, TYPE 2, 600 mm Ø X 22.3 m
 USFL 172.110, 0.9 m LT
 DSFL 172.000, 23.7 m LT
 MEDIAN INLET STD 604101
 GRATE = 173.125
 PIPE TEE STD 542606, 600 mm PIPE, 600 mm RISER, ONE END PLUGGED
 PRECAST REINFORCED CONCRETE FLARED END SECTION STD 542301, 1-EACH
 GRATING FOR CONCRETE FLARED END SECTION STD 542311, 1-EACH

CURVE NO 2
 PI STA = 37+835.958
 Δ = 70° 59' 58" (LT)
 R = 780.000 m
 T = 556.363 m
 L = 966.556 m
 E = 178.092 m
 PC STA = 37+279.595
 PT STA = 38+246.151
 SE = 5.5%
 SE ATTAINED STA 37+220.000 TO STA 37+300.000
 SE REMOVED STA 38+226.000 TO STA 38+306.000

| REVISIONS | |
|-----------|------|
| NAME | DATE |
| | |
| | |
| | |
| | |
| | |
| | |
| | |

ILLINOIS DEPARTMENT OF TRANSPORTATION
 SOIL STRATA PLAN
 FAP 310 (IL 255)
 SECTION 60-15
 MADISON COUNTY
 DRAWN BY EBB
 CHECKED BY
 DATE
 IL 255 (FAP 310), STA 37+600 TO STA 37+950

NW 1/4, SEC 24, T 6 N, R 10 W, 3RD PM

p:\02f.ies\00224\dmainline\soilstrata\plan015a005.dgn