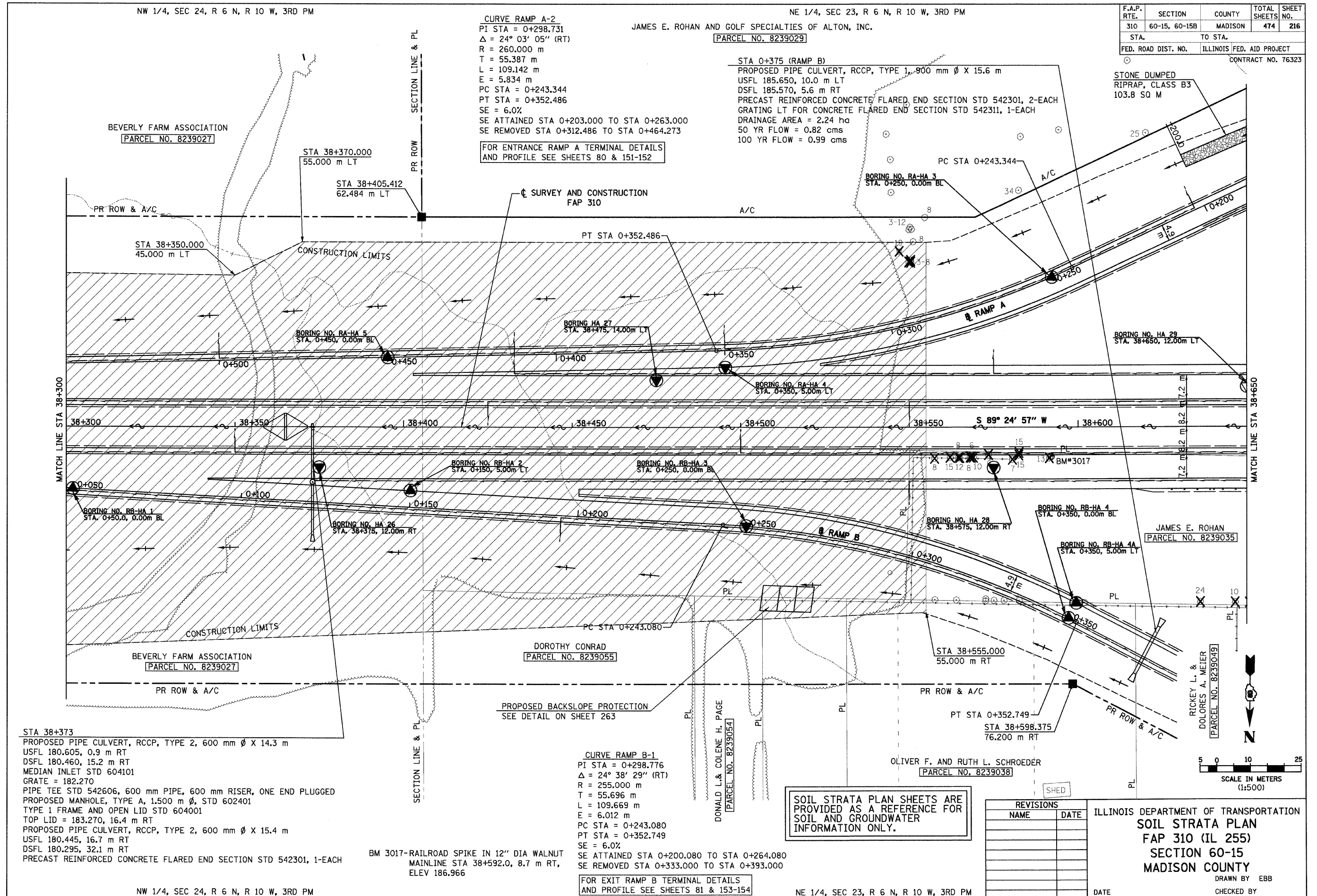


6/28/2007

p:\00files\020224\dmain\line\soils\strata\plan215at0.dgn



NW 1/4, SEC 24, R 6 N, R 10 W, 3RD PM

NE 1/4, SEC 23, R 6 N, R 10 W, 3RD PM

F.A.P. RTE.	SECTION	COUNTY	TOTAL SHEETS	SHEET NO.
310	60-15, 60-15B	MADISON	474	216
STA.	TO STA.			
FED. ROAD DIST. NO.	ILLINOIS FED. AID PROJECT			
	CONTRACT NO. 76323			

CURVE RAMP A-2
 PI STA = 0+298.731
 $\Delta = 24^\circ 03' 05''$ (RT)
 R = 260.000 m
 T = 55.387 m
 L = 109.142 m
 E = 5.834 m
 PC STA = 0+243.344
 PT STA = 0+352.486
 SE = 6.0%
 SE ATTAINED STA 0+203.000 TO STA 0+263.000
 SE REMOVED STA 0+312.486 TO STA 0+464.273

FOR ENTRANCE RAMP A TERMINAL DETAILS AND PROFILE SEE SHEETS 80 & 151-152

STA 0+375 (RAMP B)
 PROPOSED PIPE CULVERT, RCCP, TYPE 1, 900 mm ϕ X 15.6 m
 USFL 185.650, 10.0 m LT
 DSFL 185.570, 5.6 m RT
 PRECAST REINFORCED CONCRETE FLARED END SECTION STD 542301, 2-EACH
 GRATING LT FOR CONCRETE FLARED END SECTION STD 542311, 1-EACH
 DRAINAGE AREA = 2.24 ha
 50 YR FLOW = 0.82 cms
 100 YR FLOW = 0.99 cms

STA 38+373
 PROPOSED PIPE CULVERT, RCCP, TYPE 2, 600 mm ϕ X 14.3 m
 USFL 180.605, 0.9 m RT
 DSFL 180.460, 15.2 m RT
 MEDIAN INLET STD 604101
 GRATE = 182.270
 PIPE TEE STD 542606, 600 mm PIPE, 600 mm RISER, ONE END PLUGGED
 PROPOSED MANHOLE, TYPE A, 1,500 m ϕ , STD 602401
 TYPE 1 FRAME AND OPEN LID STD 604001
 TOP LID = 183.270, 16.4 m RT
 PROPOSED PIPE CULVERT, RCCP, TYPE 2, 600 mm ϕ X 15.4 m
 USFL 180.445, 16.7 m RT
 DSFL 180.295, 32.1 m RT
 PRECAST REINFORCED CONCRETE FLARED END SECTION STD 542301, 1-EACH

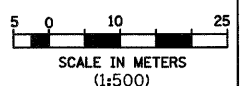
CURVE RAMP B-1
 PI STA = 0+298.776
 $\Delta = 24^\circ 38' 29''$ (RT)
 R = 255.000 m
 T = 55.696 m
 L = 109.669 m
 E = 6.012 m
 PC STA = 0+243.080
 PT STA = 0+352.749
 SE = 6.0%
 SE ATTAINED STA 0+200.080 TO STA 0+264.080
 SE REMOVED STA 0+333.000 TO STA 0+393.000

FOR EXIT RAMP B TERMINAL DETAILS AND PROFILE SEE SHEETS 81 & 153-154

SOIL STRATA PLAN SHEETS ARE PROVIDED AS A REFERENCE FOR SOIL AND GROUNDWATER INFORMATION ONLY.

REVISIONS	
NAME	DATE

ILLINOIS DEPARTMENT OF TRANSPORTATION
SOIL STRATA PLAN
FAP 310 (IL 255)
SECTION 60-15
MADISON COUNTY
 DRAWN BY EBB
 CHECKED BY
 DATE



NW 1/4, SEC 24, R 6 N, R 10 W, 3RD PM

NE 1/4, SEC 23, R 6 N, R 10 W, 3RD PM

IL 255 (FAP 310), STA 38+300 TO STA 38+650